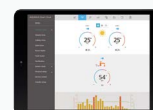
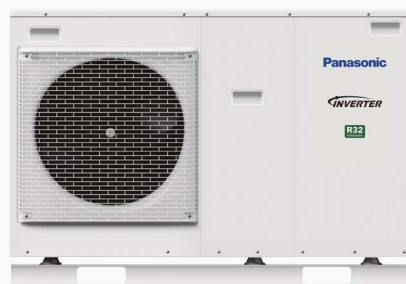


New Aquarea High Performance Mono-bloc J Generation Single Phase. Heating and Cooling - MDC

• R32 refrigerant

- Optional Smartphone control
- Maximum hydraulic module output temperature: 60 °C
- High heating and cooling capacities, even at low outdoor temperatures
- Works at temperatures as low as -20 °C
- Operation in cooling mode at outdoor temperatures as low as 10 °C
- Built-in magnet filter for easy installation



CZ-TAW1
Cloud connection.
For user control
and installer
remote
maintenance.

				Single Phase Heating and Cooling		
Outdoor unit			WH-MDC05J3E5	WH-MDC07J3E5	WH-MDC09J3E5	
Heating capacity / COP (A +7 °C, W 35 °C)		kW / COP	5,00/5,08	7,00/4,76	9,00/4,48	
Heating capacity / COP (A +7 °C, W 55 °C)		kW / COP	5,00/3,01	7,00/2,82	8,95/2,78	
Heating capacity / COP (A +2 °C, W 35 °C)		kW / COP	5,00/3,57	7,00/3,40	7,45/3,13	
Heating capacity / COP (A +2 °C, W 55 °C)		kW / COP	5,00/2,27	6,30/2,16	7,00/2,12	
Heating capacity / COP (A -7 °C, W 35 °C)		kW / COP	5,00/2,78	6,80/2,81	7,50/2,63	
Heating capacity / COP (A -7 °C, W 55 °C)		kW / COP	5,00/1,85	6,30/1,86	7,00/1,80	
Cooling capacity / EER (A 35 °C, W 7 °C)		kW / EER	5,00/3,31	7,00/3,06	9,00/2,71	
Cooling capacity / EER (A 35 °C, W 18 °C)		kW / EER	5,00/5,05	7,00/4,73	9,00/4,25	
Seasonal energy efficiency - Heating average climate (W35 °C / W55 °C)	ηs %		202/142	193/130	193/130	
	SCOP		5,12/3,63	4,90/3,32	4,90/3,32	
Energy class heating average climate (W35 °C / W55 °C)			A+++/A++	A+++/A++	A+++/A++	
Seasonal energy efficiency - Heating warm climate (W35 °C / W55 °C)	ηs %		237/165	227/160	227/160	
	SCOP		6,00/4,20	5,75/4,07	5,75/4,07	
Energy class heating warm climate (W35 °C / W55 °C)			A+++ to D	A+++/A+++	A+++/A+++	
Seasonal energy efficiency - Heating cold climate (W35 °C / W55 °C)	ηs %		160/115	164/116	164/116	
	SCOP		4,08/2,95	4,18/2,98	4,18/2,98	
Energy class heating cold climate (W35 °C / W55 °C)			A+++ to D	A++/A+	A++/A+	
Sound power part load ¹⁾	Heat	dB(A)	59	59	59	
	Heat / Cool	dB(A)	64/65	68/67	69/68	
Dimension	HxWxD	mm	865 x 1283 x 320	865 x 1283 x 320	865 x 1283 x 320	
Net weight		kg	99	104	104	
Refrigerant (R32) / CO ₂ Eq. ²⁾		kg / T	1,3/0,878	1,3/0,878	1,3/0,878	
Water pipe connector		Inch	R 1½	R 1½	R 1½	
Pump	Number of speeds		Variable Speed	Variable Speed	Variable Speed	
	Input power (Min/Max)	W	34/96	36/100	39/108	
Heating water flow (ΔT=5 K, 35 °C)		L/min	14,3	20,1	25,8	
Capacity of integrated electric heater		kW	3	3	3	
Input Power	Heat	kW	0,985	1,47	2,01	
	Cool	kW	1,51	2,29	3,32	
Running and Starting current	Heat	A	4,7	7,0	9,3	
	Cool	A	7,0	10,5	14,7	
Current 1		A	12	17	17	
Current 2		A	13	13	13	
Recommended fuse		A	30/15	30/15	30/16	
Recommended cable size, supply 1 / 2		mm ²	3x 1,5/3x 1,5	3x 2,5/3x 1,5	3x 2,5/3x 1,5	
Operation range (outdoor temperature)	Heat	°C	-20 - 35	-20 - 35	-20 - 35	
	Cool	°C	10 - 43	10 - 43	10 - 43	
Water outlet	Heat	°C	20 - 60	20 - 60	20 - 60	
	Cool	°C	5 - 20	5 - 20	5 - 20	

Accessories (optional)

PAW-TD20C1E5	Tank 200L - Stainless steel
PAW-TD30C1E5	Tank 300L - Stainless steel
PAW-TA20C1E5STD	Tank 200L - Enamelled
PAW-TA30C1E5STD	Tank 300L - Enamelled
PAW-TD20B8E3-1	Combo Tank 185L + 80L - Enamelled
PAW-TD23B6E5	Combo Tank 230L + 60L - Stainless steel
PAW-3WYVLV-HW	3 way valve for DHW Tanks

Accessories (optional)

PAW-BTANK50L-2	Buffer tank 50L
CZ-TAW1	Aquarea Smart Cloud for remote control and maintenance through wireless or wired LAN
PAW-A2W-RTWIRED	Room thermostat
PAW-A2W-RTWIREDLESS	Wireless LCD room thermostat
PAW-A2W-AFVLY	Anti-freeze valve.

1) Sound power in accordance to 8112013,81312013 and EN12102-1:2017 at +7 °C. 2) WH-MDC models are hermetically sealed. EER and COP calculation is based in accordance to EN14511. * Available in May 2020.