

Data sheet for SIMOTICS S-1FK2

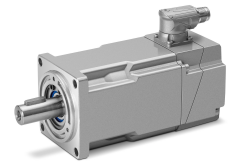


Figure similar

MLFB-Ordering data

1FK2106-6AF11-1MA0

Client order no. :

Order no. :

Offer no. :

Remarks :

Item no. :

Consignment no. :

Project :

| Basic motor data | | Mechanical data | |
|-------------------------|---|-------------------------------|----------------------|
| Motor type | Permanent-magnet synchronous motor, Natural cooling, IP65 | Design acc. to Code I | IM B5 (IM V1, IM V3) |
| Motor type | High Dynamic | Vibration severity grade | Grade A |
| Static torque | 16.00 Nm | Shaft height | 63 |
| Static current | 14.3 A | Flange size (AB) | 125 mm |
| Maximum torque | 42.00 Nm | Centering ring (N) | 110 mm |
| Maximum current | 44.0 A | Hole circle (M) | 130 mm |
| Maximum speed | 6000 rpm | Screw-on hole (S) | 9.0 mm |
| Rotor moment of inertia | 10.400 kgcm ² | Overall length (LB) | 283 mm |
| Weight | 13.4 kg | Diameter of shaft (D) | 24 mm |
| | | Length of shaft (E) | 50 mm |
| | | Length of flange diagonal (P) | 158 mm |
| | | Shaft extension | Fitted key |

Rated data

SINAMICS S210, 3AC 400V

| | |
|---------------|----------|
| Rated speed | 3000 rpm |
| Rated torque | 10.60 Nm |
| Rated current | 9.7 A |
| Rated power | 3.30 kW |

Encoder system

| | |
|----------------|---|
| Encoder system | Encoder AM22DQC: Absolute encoder 22 bit + 12 bit multiturn |
|----------------|---|

Motor connection

| | |
|-----------------|--------------|
| Connection type | OCC for S210 |
| Connector size | M23 |

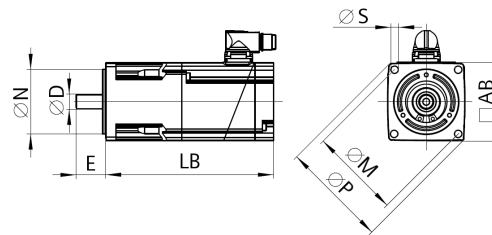


Figure similar

1FK2106-6AF11-1MA0

Figure similar

¹⁾ Up to three consecutive emergency stops and up to 25% of all emergency stops as a Wmax high energy stop possible.

²⁾ Typical value for 20°C ambient temperature. At -15°C the break-induced currents can be increased by up to 30%.