

Data sheet for SIMOTICS S-1FK2

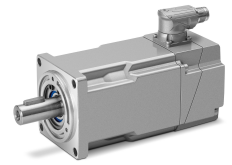


Figure similar

MLFB-Ordering data

1FK2106-6AF10-1MA0

Client order no. :

Order no. :

Offer no. :

Remarks :

Item no. :

Consignment no. :

Project :

Basic motor data		Mechanical data	
Motor type	Permanent-magnet synchronous motor, Natural cooling, IP64	Design acc. to Code I	IM B5 (IM V1, IM V3)
Motor type	High Dynamic	Vibration severity grade	Grade A
Static torque	16.00 Nm	Shaft height	63
Static current	14.3 A	Flange size (AB)	125 mm
Maximum torque	42.00 Nm	Centering ring (N)	110 mm
Maximum current	44.0 A	Hole circle (M)	130 mm
Maximum speed	6000 rpm	Screw-on hole (S)	9.0 mm
Rotor moment of inertia	10.400 kgcm ²	Overall length (LB)	283 mm
Weight	13.4 kg	Diameter of shaft (D)	24 mm
		Length of shaft (E)	50 mm
		Length of flange diagonal (P)	158 mm
		Shaft extension	Fitted key

Rated data

SINAMICS S210, 3AC 400V

Rated speed	3000 rpm
Rated torque	10.60 Nm
Rated current	9.7 A
Rated power	3.30 kW

Encoder system

Encoder system	Encoder AM22DQC: Absolute encoder 22 bit + 12 bit multiturn
----------------	---

Motor connection

Connection type	OCC for S210
Connector size	M23

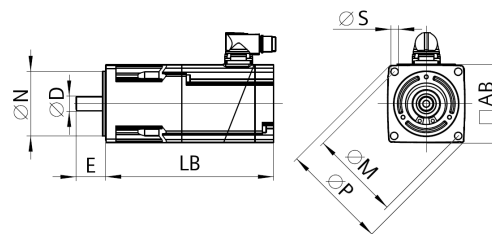


Figure similar

1FK2106-6AF10-1MA0

Figure similar

¹⁾ Up to three consecutive emergency stops and up to 25% of all emergency stops as a Wmax high energy stop possible.

²⁾ Typical value for 20°C ambient temperature. At -15°C the break-induced currents can be increased by up to 30%.