



Figure similar

MLFB-Ordering data 1FK2106-4AF10-1SA0

Client order no. :
Order no. :
Offer no. :
Remarks :

Item no. :
Consignment no. :
Project :

Basic motor data		Mechanical data	
Motor type	Permanent-magnet synchronous motor, Natural cooling, IP64	Design acc. to Code I	IM B5 (IM V1, IM V3)
Motor type	High Dynamic	Vibration severity grade	Grade A
Static torque	12.00 Nm	Shaft height	63
Static current	10.7 A	Flange size (AB)	125 mm
Maximum torque	32.50 Nm	Centering ring (N)	110 mm
Maximum current	40.0 A	Hole circle (M)	130 mm
Maximum speed	6000 rpm	Screw-on hole (S)	9.0 mm
Rotor moment of inertia	7.600 kgcm²	Overall length (LB)	244 mm
Weight	10.6 kg	Diameter of shaft (D)	24 mm
		Length of shaft (E)	50 mm
		Length of flange diagonal (P)	158 mm
		Shaft extension	Fitted key

Rated data

SINAMICS S210, 3AC 400V

Rated speed	3000 rpm
Rated torque	8.60 Nm
Rated current	8.1 A
Rated power	2.70 kW

Encoder system

Encoder system	Encoder AS22DQC: Absolute encoder single turn 22 bit
----------------	--

Motor connection

Connection type	OCC for S210
Connector size	M23

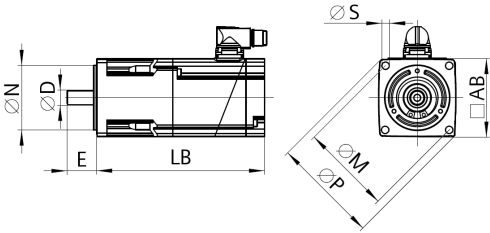


Figure similar

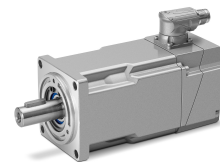


Figure similar

MLFB-Ordering data

1FK2106-4AF10-1SA0

Holding brake	
Holding torque	13.00 Nm
Opening time	70 ms
Closing time	30 ms
Maximum single switching energy ¹⁾	1550.0 J
Service life, operating energy	774000 J
Holding current	0.35 A
Break-induced current for 500 ms ²⁾	1.1 A

¹⁾ Up to three consecutive emergency stops and up to 25% of all emergency stops as a Wmax high energy stop possible.

²⁾ Typical value for 20°C ambient temperature. At -15°C the break-induced currents can be increased by up to 30%.