

Data sheet for SIMOTICS S-1FK2



Figure similar

MLFB-Ordering data

1FK2210-3AC10-1MA0

Client order no. :

Order no. :

Offer no. :

Remarks :

Item no. :

Consignment no. :

Project :

Basic motor data		Mechanical data	
Motor type	Permanent-magnet synchronous motor, Natural cooling, IP64	Design acc. to Code I	IM B5 (IM V1, IM V3)
Motor type	Compact	Vibration severity grade	Grade A
Static torque	30.00 Nm	Shaft height	100
Static current	15.0 A	Flange size (AB)	192 mm
Maximum torque	90.00 Nm	Centering ring (N)	180 mm
Maximum current	55.0 A	Hole circle (M)	215 mm
Maximum speed	4400 rpm	Screw-on hole (S)	14.0 mm
Rotor moment of inertia	94.800 kgcm ²	Overall length (LB)	257 mm
Weight	25.0 kg	Diameter of shaft (D)	38 mm
		Length of shaft (E)	80 mm
		Length of flange diagonal (P)	244 mm
		Shaft extension	Fitted key

Rated data

SINAMICS S210, 3AC 400V

Rated speed	2000 rpm
Rated torque	26.00 Nm
Rated current	13.5 A
Rated power	5.50 kW

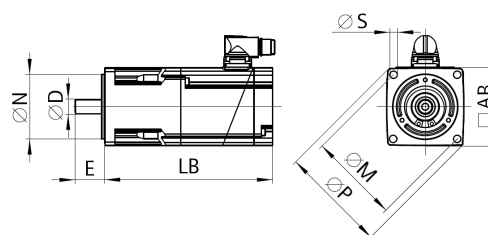


Figure similar

Encoder system

Encoder system	Encoder AM22DQC: Absolute encoder 22 bit + 12 bit multiturn
----------------	---

Motor connection

Connection type	OCC for S210
Connector size	M23

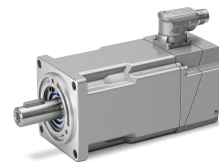


Figure similar

MLFB-Ordering data

1FK2210-3AC10-1MA0

Holding brake	
Holding torque	32.00 Nm
Opening time	120 ms
Closing time	35 ms
Maximum single switching energy ¹⁾	6500.0 J
Service life, operating energy	2400000 J
Holding current	0.5 A
Break-induced current for 500 ms ²⁾	1.4 A

¹⁾ Up to three consecutive emergency stops and up to 25% of all emergency stops as a Wmax high energy stop possible.

²⁾ Typical value for 20°C ambient temperature. At -15°C the break-induced currents can be increased by up to 30%.