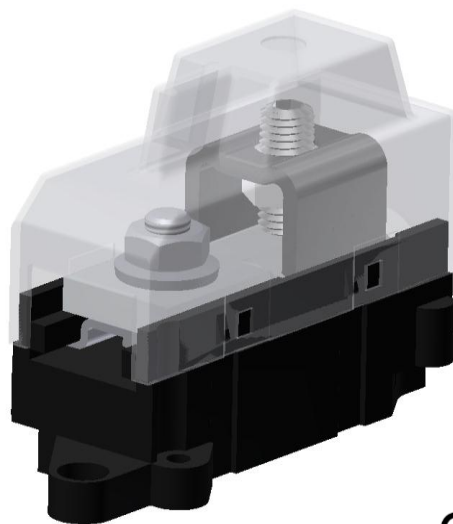


**Product data**

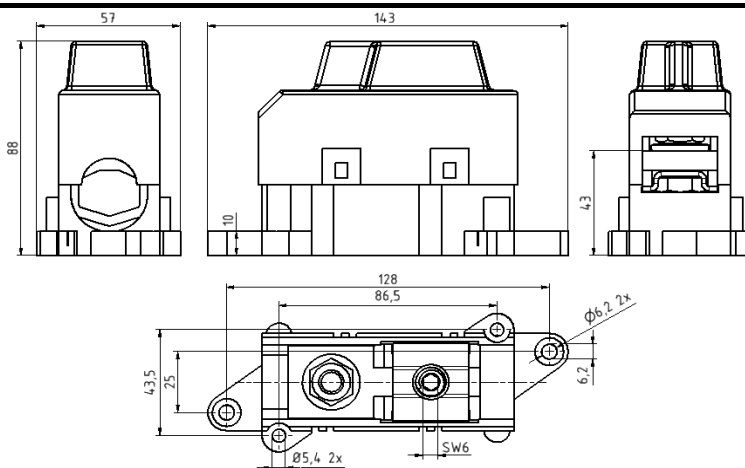
|              |                                       |          |                |          |                      |
|--------------|---------------------------------------|----------|----------------|----------|----------------------|
| Product code | <b>VC03-0003</b>                      | STK-code | <b>1914142</b> | EAN-code | <b>6410019141429</b> |
| Product name | <b>OLE 185-300</b>                    |          |                |          |                      |
| Wires        | <b>1xAl/Cu 185-300 mm<sup>2</sup></b> |          |                |          |                      |

**Technical data**

|                            |   |             |                 |
|----------------------------|---|-------------|-----------------|
| Nominal current            | Cu  | <b>560</b>  | A               |
|                            | Al  | <b>560</b>  | A               |
| Nominal voltage            |   | <b>690</b>  | V               |
| Max. Current (US)          | Cu  | -           | A               |
|                            | Al  | -           | A               |
| Max. Voltage (US)          |   | -           | V               |
| Number of pole             |   | <b>1</b>    |                 |
| Max. Cross section         |   | <b>300</b>  | mm <sup>2</sup> |
| Tightening torque          | 185-300 mm <sup>2</sup>   | <b>70</b>   | Nm              |
|                            |   |             |                 |
|                            |   |             |                 |
|                            |   |             |                 |
| Max. Operating temperature |   | <b>80</b>   | °C              |
| Weight                     |   | <b>260</b>  | g               |
| IP-protection              |   | <b>IP20</b> |                 |
| Standards                  | -   |             |                 |
| Color/ Material            | <b>Connector Stainless steel/ Tin plated copper; Housing PP66/ PC</b> |             |                 |
| Mounting/ Connection       | <b>Screw</b>  |             |                 |


**Description**

OLE-connectors are housing equipped OL-connectors. They are designed to be used connecting aluminium and copper conductors. Frames are made of stainless steel and busbars are tin-plated copper. OLE-connectors can be mounted side by side with screws to each other.

**Drawing**

**Package**

|             |            |              |            |             |             |
|-------------|------------|--------------|------------|-------------|-------------|
| Package     | <b>Box</b> | pcs/ package | <b>8</b>   | Weight [Kg] | <b>3,64</b> |
| Length [mm] | <b>300</b> | Width [mm]   | <b>205</b> | Height [mm] | <b>100</b>  |