

Data sheet for SIMOTICS S-1FK2

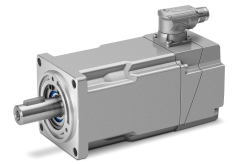


Figure similar

MLFB-Ordering data

1FK2102-0AG10-1MA0

Client order no. :

Order no. :

Offer no. :

Remarks :

Item no. :

Consignment no. :

Project :

Basic motor data		Mechanical data	
Motor type	Permanent-magnet synchronous motor, Natural cooling, IP64	Design acc. to Code I	IM B5 (IM V1, IM V3)
Motor type	High Dynamic	Vibration severity grade	Grade A
Static torque	0.16 Nm	Shaft height	20
Static current	0.8 A	Flange size (AB)	40 mm
Maximum torque	0.56 Nm	Centering ring (N)	30 mm
Maximum current	3.1 A	Hole circle (M)	46 mm
Maximum speed	8000 rpm	Screw-on hole (S)	4.5 mm
Rotor moment of inertia	0.029 kgcm ²	Overall length (LB)	121 mm
Weight	0.7 kg	Diameter of shaft (D)	8 mm
		Length of shaft (E)	25 mm
		Length of flange diagonal (P)	54 mm
		Shaft extension	Fitted key

Rated data

SINAMICS S210, 1AC 230V

Rated speed	3000 rpm
Rated torque	0.16 Nm
Rated current	0.8 A
Rated power	0.05 kW

Encoder system

Encoder system	Encoder AM22DQC: Absolute encoder 22 bit + 12 bit multiturn
----------------	---

Motor connection

Connection type	OCC for S210
Connector size	M12

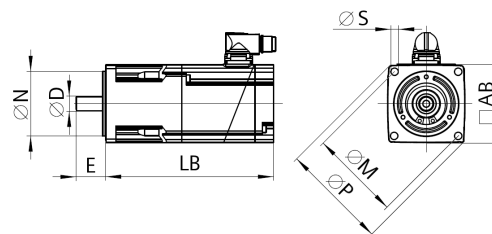


Figure similar

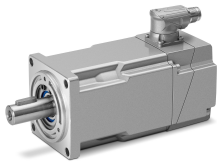


Figure similar

MLFB-Ordering data 1FK2102-0AG10-1MA0

Holding brake	
Holding torque	0.32 Nm
Opening time	25 ms
Closing time	8 ms
Maximum single switching energy ¹⁾	7.4 J
Service life, operating energy	1750 J
Holding current	0.1 A
Break-induced current for 500 ms ²⁾	0.6 A

¹⁾ Up to three consecutive emergency stops and up to 25% of all emergency stops as a Wmax high energy stop possible.

²⁾ Typcial value for 20°C ambient temperature. At -15°C the break-induced currents can be increased by up to 30%.