

VR10S-MF VR11S-MF VR40S-MF VR41S-MF

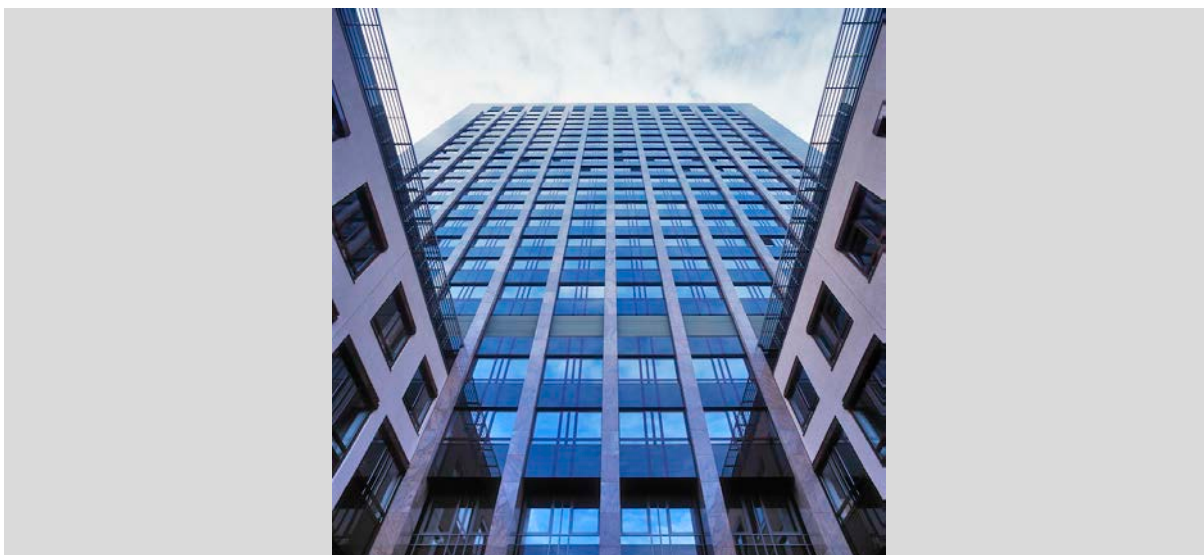
Executively designed card readers for modern security - DATASHEET

VANDERBILT



Hardwearing materials which endure most weather conditions and a host of domestic detergents. Multicolour light frame on all readers and OLED display on keypad variants. Key Features include:

- **Hardwearing materials**
- **IK class 08 and IP55**
- **MIFARE card technology**
- **Multicolour LED light frame**
- **Easy to mount and connect**
- **Card reader only or card reader with keypad and display variants**
- **Graphical OLED display**



Functionalities

Executively designed card readers for modern security. Hardwearing materials which endure most weather conditions and a host of domestic detergents. Multicolour light frame on all readers and OLED display on keypad variants.

- **Surface mounted** – The card reader is mounted on the base which is fastened on a wall.
- **Back box mounted** - The card reader is mounted partly inside a back box in a wall.

Type	Part no	Designation	Weight*
VR10S-MF	V54504-F101-A100	MIFARE card reader standard	500 g
VR11S-MF	V54504-F101-A200	MIFARE card reader standard incl. UK adapter plate and extension cable	550 g
VR40S-MF	V54504-F102-A100	MIFARE card reader standard with keypad and display	500 g
VR41S-MF	V54504-F102-A200	MIFARE card reader standard with keypad and display incl. UK adapter plate and extension cable	550 g

* Unit incl. packing material and accessories which are included in the delivery.

Technical Data

	VR10S-MF MIFARE card reader standard	VR40S-MF MIFARE card reader standard with keypad and display
	VR11S-MF MIFARE card reader standard incl. UK adapter plate and extension cable	VR41S-MF MIFARE card reader standard with keypad and display incl. UK adapter plate and extension cable
Protocol	OSDP	OSDP
Interface to controller	RS485	RS485
Operating voltage	8.5 – 30.0 VDC	8.5 – 30.0 VDC
Power consumption	DC 12V 43mA Peak 168mA DC 24V 26mA Peak 100mA	DC 12V 60mA Peak 220mA DC 24V 40mA Peak 125mA
Tamper protection	Yes	Yes
Card technology	MIFARE	MIFARE
Card compatibility	MIFARE Classic MIFARE Plus (UID only) MIFARE DESfire EV1	MIFARE Classic MIFARE Plus (UID only) MIFARE DESfire EV1
Reading distance	Up to 6 cm	Up to 6 cm
Indicators	3 x LED (red/yellow/green) 1 x Buzzer Multicolor light frame	3 x LED (red/yellow/green) 1 x Buzzer Multicolor light frame
Keypad	No	Yes
Display	No	Yes
Operating temperature	-40°C to +55°C*	-40°C to +55°C*
IP rating	IP55**	IP55**
IK class	08	08
Housing	Zinc casted metal bezel with polycarbonate plastic front	Zinc casted metal bezel with polycarbonate plastic front
Colour	Black, matt chrome	Black, matt chrome
Dimensions (W x H x D)	Surface mounted: 85 x 114 x 22 Back box mounted: 85 x 114 x 14	Surface mounted: 85 x 114 x 22 Back box mounted: 85 x 114 x 14
Approvals	CE according to R&TTE and EMC Directives	CE according to R&TTE and EMC Directives

* Only applicable for surface mounted readers. Back box mounted readers are specified from -10°C to +55°C.

** Only applicable for surface mounted readers. Back box mounted readers are specified to IP3X.

