



Figure similar

CIRCUIT BREAKER 3VA1 IEC FRAME 100 BREAKING CAPACITY CLASS N ICU=25KA @ 415 V 3-POLE, LINE PROTECTION TM210, FTFM, IN=32A OVERLOAD PROTECTION IR=32A FIXED SHORT CIRCUIT PROTECTION II=10 X IN CABLE CONNECTION

Model		
product brand name		SENTRON
Product designation		Molded case circuit breaker
<b>Design of the product</b>		Line protection
<b>Product variations</b>		General Applications
<b>Ground fault monitoring version</b>		Without
<b>Design of the auxiliary release</b>		Without auxiliary release
<b>Design of the auxiliary switch</b>		Without
<b>Design of the operating mechanism</b>		toggle handle
<b>Type of the driving mechanism / motor drive</b>		No
<b>Design of the overcurrent release</b>		TM210
General technical data		
<b>Number of poles</b>		3
<b>Trip class / of the L-trip / with I<sup>2</sup>t characteristic / initial value</b>		1
<b>Trip class / of the L-trip / with I<sup>2</sup>t characteristic / Full-scale value</b>		1
<b>Electrical endurance (switching cycles)</b>		8 000
<ul style="list-style-type: none"> <li>at AC-1 / at 380/415 V / at 50/60 Hz</li> </ul>		
<b>circuit-breaker / Design</b>		3VA
<b>Mechanical service life (switching cycles) / typical</b>		15 000
Voltage		
<b>Insulation voltage</b>		
<ul style="list-style-type: none"> <li>Rated value</li> </ul>	V	800

Protection class		
<b>Protective function of the overcurrent release</b>		LI
Switching capacity		
<b>Switching capacity class of the circuit breaker</b>		N
Dissipation		
<b>Active power loss</b>		
• maximum	W	10.6
Electricity		
Operating current / at 45 °C / Rated value	A	32
Continuous current / Rated value / maximum	A	100
<b>Continuous current</b>		
• Rated value	A	32
<b>Adjustable response value current</b>		
• of the current-dependent overload release / Full-scale value	A	1
• of the instantaneous short-circuit release / initial value	A	10
<b>Net weight</b>	g	900
Main circuit		
<b>Operating voltage</b>		
• with AC / at 50/60 Hz / Rated value	V	690
• for DC / Rated value	V	500
<b>Operating current</b>		
• at 40 °C / Rated value	A	32
• at 50 °C / Rated value	A	32
• at 55 °C / Rated value	A	31.04
• at 60 °C / Rated value	A	31
• at 65 °C / Rated value	A	30
• at 70 °C / Rated value	A	30
Auxiliary circuit		
<b>Number of CO contacts</b>		
• for auxiliary contacts		0
Suitability		
• <b>Suitability for use</b>		system protection
Adjustable parameters		
<b>Adjustable response value current</b>		
• of I-trip / Full-scale value	A	10
• for N-conductor protection / initial value	A	0
• for N-conductor protection / Full-scale value	A	0

<b>Adjustable response value current / of the current-dependent overload release / initial value</b>	A	1
--	---	---

## Appearance

### Product details

<b>Product component</b>		
• Trip indicator		No
• display		No
• Voltage trigger		No
• undervoltage release		No
• undervoltage release with leading contact		No
<b>Product property</b>		
• for neutral conductors / upgradeable/retrofitable / Short-circuit and overload proof		No
<b>Product expansion</b>		
• optional — motor drive		No

### Product function

<b>Product function</b>		
• Intrinsic device protection		Yes
• communication function		No
• Phase failure detection		No
• other measurement function		No

## Accessories

<b>Manufacturer article number / of the supplied basic switch</b>		3VA1032-3ED36-0AA0
---	--	--------------------

## Short circuit

<b>Operational short-circuit current breaking capacity (Ics)</b>		
• at 240 V / Rated value	kA	36
• at 415 V / Rated value	kA	25
• at 440 V / Rated value	kA	16
• at 500 V / Rated value	kA	8
• at 690 V / Rated value	kA	5
<b>Maximum short-circuit current breaking capacity (Icu)</b>		
• at 240 V / Rated value	kA	36
• at 415 V / Rated value	kA	25
• at 440 V / Rated value	kA	16
• at 500 V / Rated value	kA	8
• at 690 V / Rated value	kA	5
<b>Short-circuit current making capacity (Icm)</b>		

- at 240 V / Rated value
- at 415 V / Rated value
- at 690 V / Rated value

kA	75.6
kA	52.5
kA	7.5

### Connections

<b>Arrangement of electrical connectors</b>		
• for main current circuit		Front terminal
Type of connectable conductor cross-section		
• of the round conductor terminal / stranded		1 x (1.5 - 70 mm <sup>2</sup> )
<b>Design of the electrical connection</b>		
• for main current circuit		Box terminal

### Mechanical Design

<b>Height</b>	mm	130
<b>Width</b>	mm	76.2
<b>Depth</b>	mm	70
<b>Mounting type</b>		fixed mounting

### Environmental conditions

<b>Ambient temperature</b>		
• during operation / minimum	°C	-25
• during operation / maximum	°C	70
• during storage / minimum	°C	-40
• during storage / maximum	°C	80

### Certificates

<b>Reference code</b>		
• acc. to DIN EN 61346-2		Q
• acc. to DIN EN 81346-2		Q

<b>General Product Approval</b>	<b>EMC</b>	<b>Declaration of Conformity</b>	<b>Shipping Approval</b>	<b>other</b>
---------------------------------	------------	----------------------------------	--------------------------	--------------



[other](#)



EG-Konf.



GL

[other](#)

### Further information

**Information- and Downloadcenter (Catalogs, Brochures,...)**

<http://www.siemens.com/lowvoltage/catalogs>

**Industry Mall (Online ordering system)**

<https://eb.automation.siemens.com/mall/en/WW/Catalog/Product/3VA10323ED360AA0>

**Service&Support (Manuals, Certificates, Characteristics, FAQs,...)**

<http://support.automation.siemens.com/WW/view/en/3VA10323ED360AA0/all>

**Image database (product images, 2D dimension drawings, 3D models, device circuit diagrams, ...)**

[http://www.automation.siemens.com/bilddb/cax\\_en.aspx?mfb=3VA10323ED360AA0](http://www.automation.siemens.com/bilddb/cax_en.aspx?mfb=3VA10323ED360AA0)

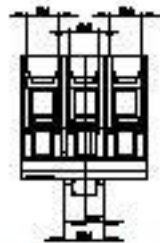
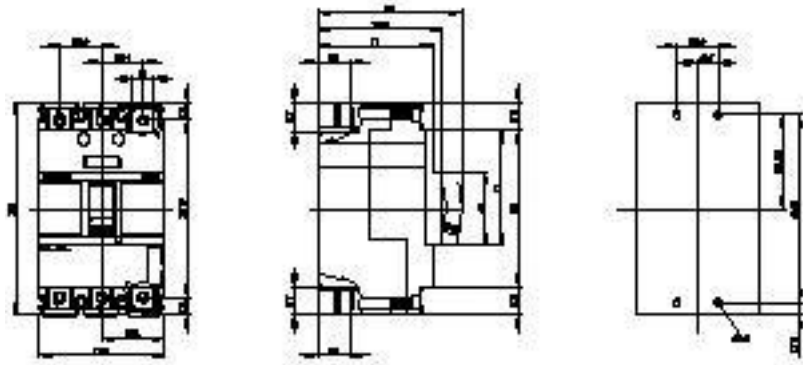


Figure similar

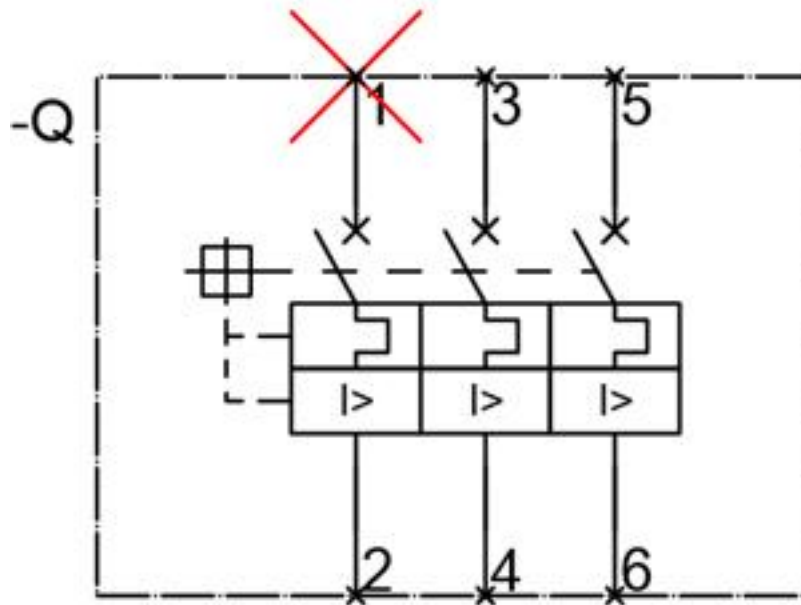


Figure similar

**last modified:**

21.10.2014