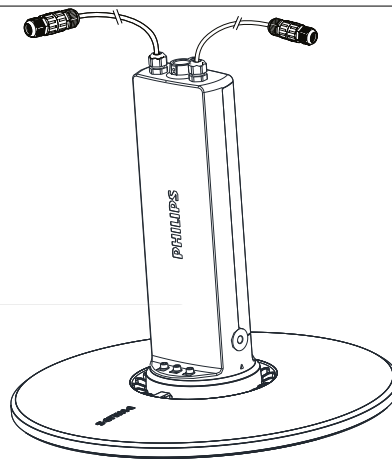
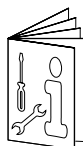


PHILIPS

Coreline Highbay Gen4

BY120P/BY121P/
BY122P



220V
240V

50Hz
60Hz




IP65

IK07

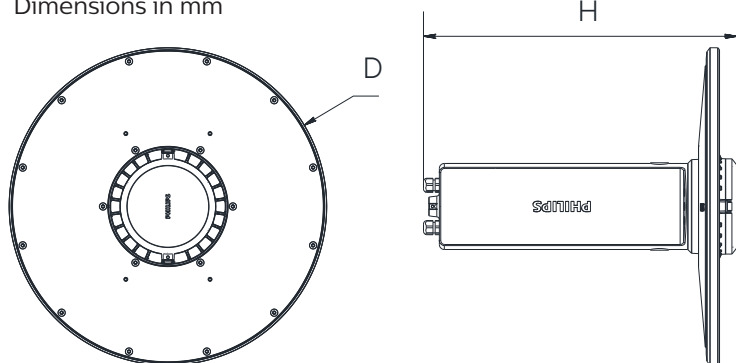
GLOW
WIRE
650 °C

Max.
45 °C
Min.
-30 °C

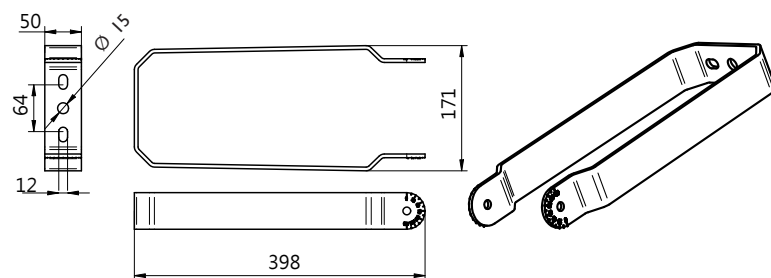


	System lumen (lm)	CCT	Pmax (W)	Optics	Dimensions in mm		
					D	H	
BY120P LED100S PSD	10000		73		385	445	6
BY121P LED200S PSD	20000	4000	146	WB	450	445	7.7
BY122P LED250S PSD	25000		183		510	464	10

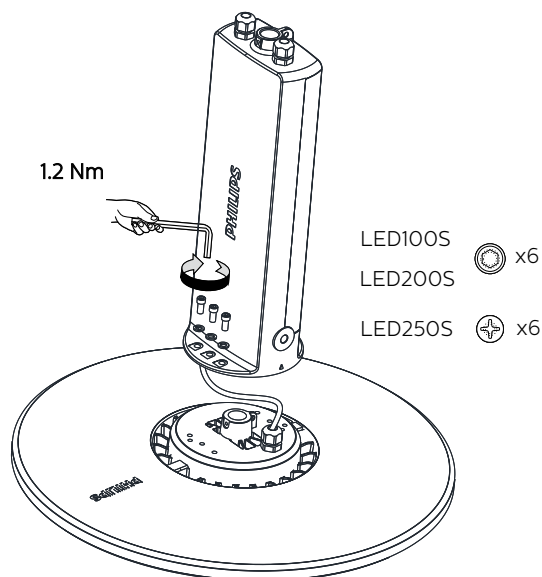
Dimensions in mm



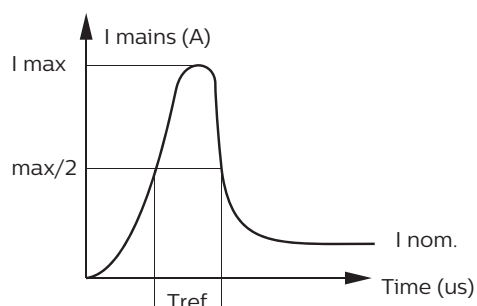
Optional:



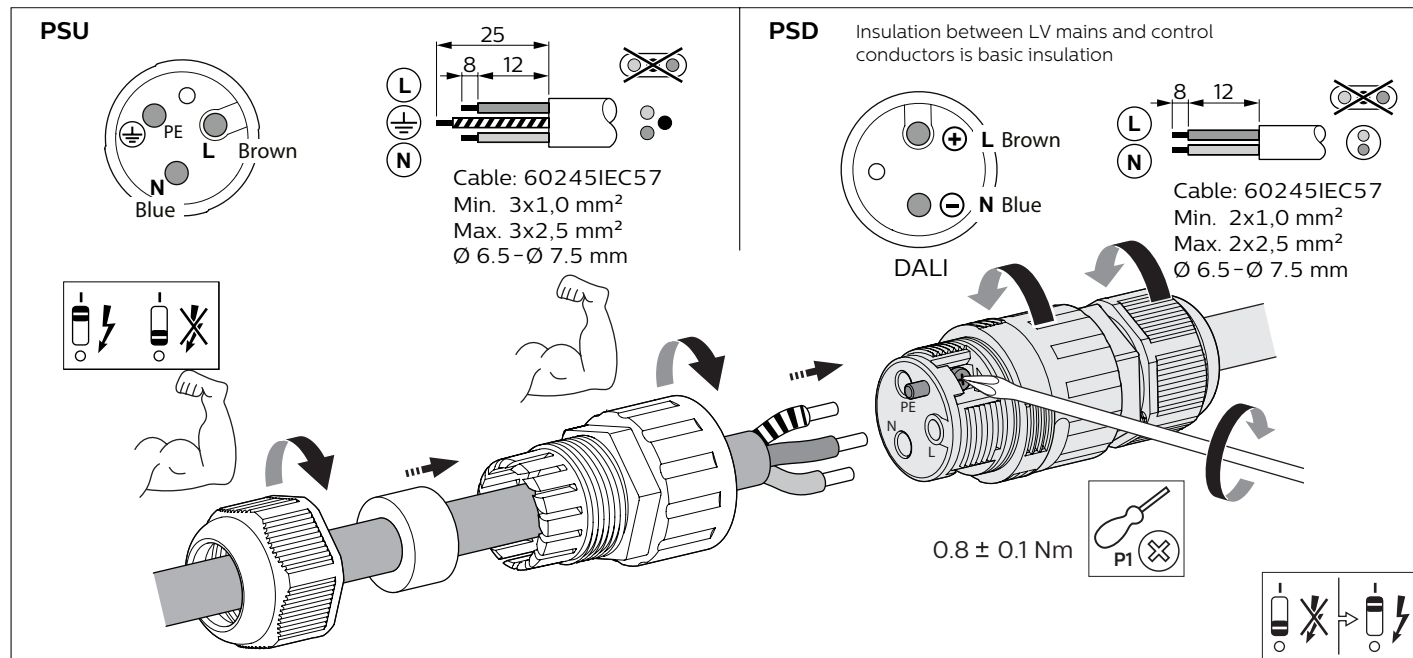
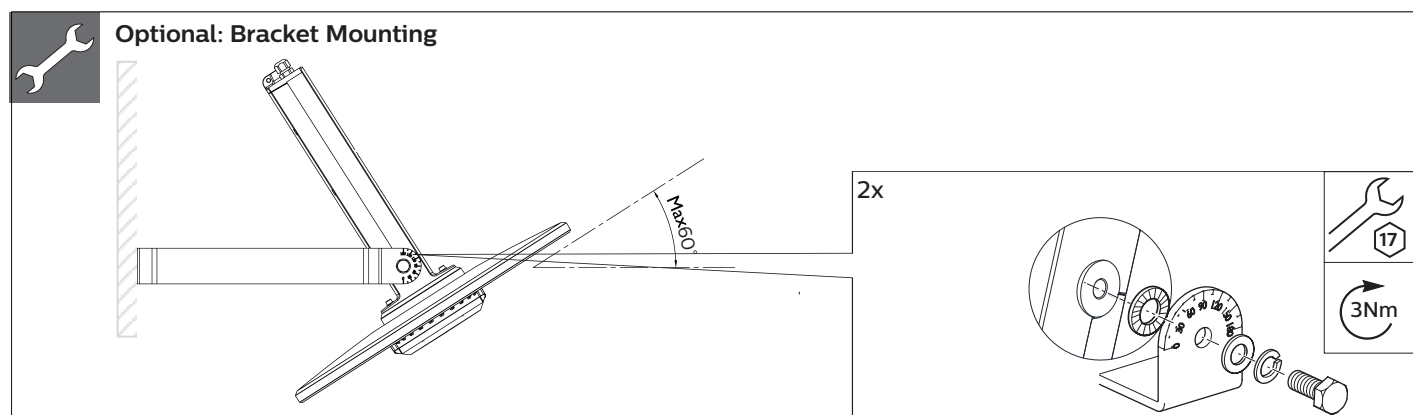
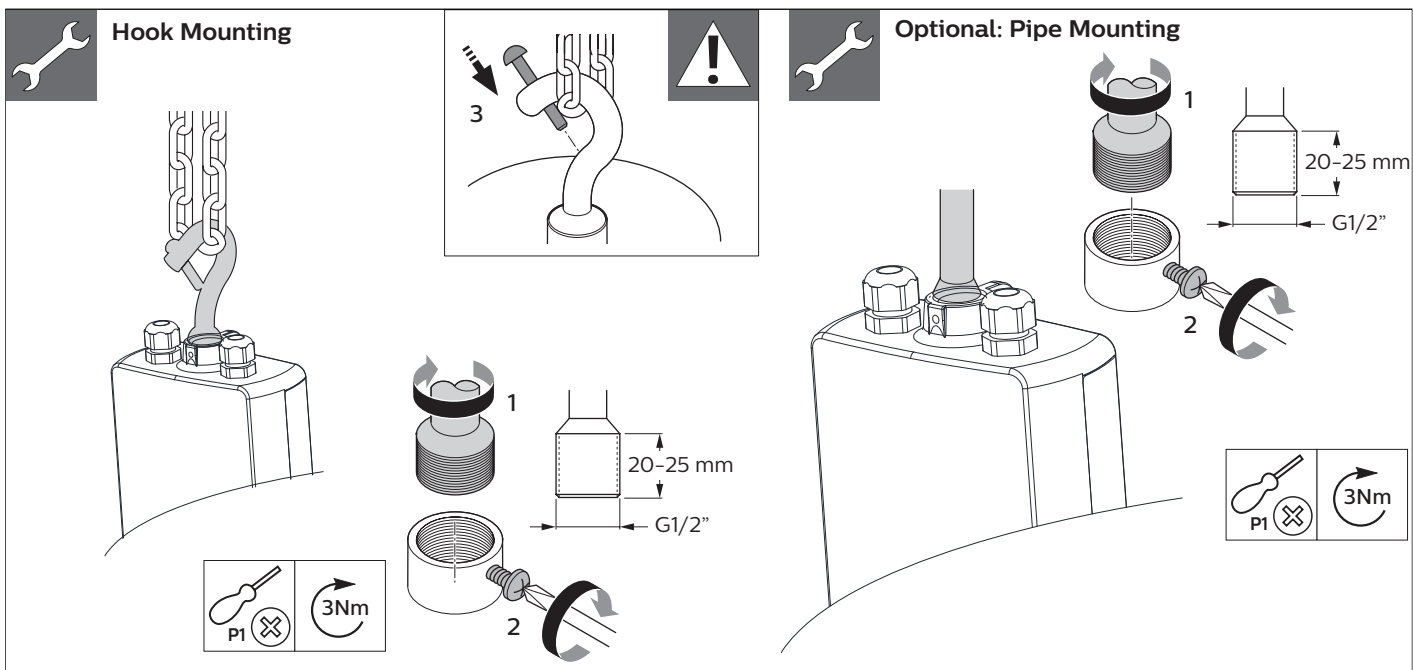
Fix Driver Box



Inrush current



	BY120P	BY121P	BY122P
Electrical characteristics			
Inom (A)	0.34	0.67	0.85
Imax (A)	53	53	60
Tref (μs)	300	300	600
MCB	Maximum number of luminaires		
C-16 A	13	13	8



- The luminaire shall be installed by a qualified electrician and wired in accordance with the latest IEE electrical regulations or the national requirements .
- Do not switch on before complete installation.
- The height between luminous surface and ground suggested be more than 5m; and the height between bottom of luminaire and mounting surface must be more than 0.3m.
- If customer require the luminous surface levelness < 1°, the pipe mounting method is recommended, and suggest to use gradienter to precisely measure and adjust.
- If the external flexible cable or cord of this luminaire is damaged. It shall be exclusively replaced by the manufacturer or his service agent or a similar qualified person in order to avoid a hazard.
- The light source contained in this luminaire shall only be replaced by the manufacturer or his service agent or a similar qualified person.
- The corrosive atmosphere or hazardous materials such as sulfur, chlorine, phthalate, etc must be avoided during the use and storage.
- Luminaire don't have any evaluation on additional protection measures to prevent luminaire from high-altitude falling and windproof structure, can't be used as flood and tunnel luminaire.
- Not suitable for use in harsh vibration and often causing vibration or swinging environment. Also not suitable for area prone to hurricane and extreme winds.
- Installer needs to be arrange for the Chain / Pipe for mounting. The default product is supplied with a mounting hook