

Similar to image

CIRCUIT BREAKER VL 150X UL,  
TYPE CG (CAT NO. NCX3B080) NON-  
INTERCHANGEABLE FRAME W/APPROVAL CIRCUIT  
BREAKER TO UL489 STANDARD BREAKING CAPACITY 3  
-POLE,  
NEMA RATING 35KA/480V (MOLDED CASE CIRCUIT  
BREAKER) OVERCURRENT RELEASE TM,  
LI FUNCTION TU=40DEGR CELSIUS IN=<80A RATED  
CURRENT II=1000A SHORT-CIRCUIT PROT. IR=80A  
OVERCURRENT RELEASE FOR SYSTEM PROTECTION  
W/O CONNECTION ACCESSORIES

### General technical data:

<b>Number of poles</b>		3
<b>Design of the overcurrent release</b>		TM
<b>Acceptability for application</b>		system protection
<b>Electrical operating cycles as operating time / typical</b>		10,000
<b>Mechanical operating cycles as operating time / typical</b>		20,000
<b>Product component</b>		
• auxiliary switch		No
• Voltage trigger		No
• undervoltage release mechanism		No
• undervoltage release with leading contact		No
<b>Product function</b>		
• of the thermal overload release		fixed
• ground-fault protection		No
• for zero conductors / short-circuit and overload protection		No
• overload protection		Yes
<b>Operating cycles / maximum</b>	1/s	120
<b>Protection class IP</b>		IP20
<b>Protective function of the overcurrent release</b>		LI

<b>Impulse voltage resistance / rated value</b>	kV	8
<b>Ambient temperature</b>		
• during operating		
• minimum	°C	-25 ...
• maximum	°C	70
• during storage		
• minimum	°C	-40
• maximum	°C	50

#### Main circuit:

<b>Insulation voltage / for AC / rated value</b>	V	800
<b>Operating frequency</b>		
• 1 / rated value	Hz	50
• 2 / rated value	Hz	60
<b>Item designation</b>		
• according to DIN 40719 extendable after IEC 204-2 / according to IEC 750		Q
• according to DIN EN 61346-2		Q
<b>Operating voltage</b>		
• for main current circuit		
• at 50 Hz / for AC		
• acc. to UL 489 / maximum	V	600
• maximum	V	690
• at 60 Hz / for AC		
• acc. to UL 489 / maximum	V	600
• maximum	V	690
• for DC		
• acc. to UL 489 / maximum	V	250
<b>Operating current</b>		
• at 40 °C / rated value	A	80
• at 50 °C / rated value	A	74.4
• at 60 °C / rated value	A	68.8
<b>Continuous current / rated value</b>	A	80
<b>Derating temperature / for the rated value of the continuous current</b>		
• acc. to UL 489	°C	40

#### Auxiliary circuit:

<b>Number of NC contacts / for auxiliary contacts</b>		0
<b>Number of NO contacts / for auxiliary contacts</b>		0

#### Short-circuit:

<b>Adjustable response current</b>		
	• of the current-dependent overload release	
	• initial value	A 80 ...
	• final value	A 80
	• of the non-delayed short-circuit release	
	• initial value	A 1,000 ...
	• final value	A 1,000
<b>Breaking capacity limit short-circuit current (Icu) / at 415 V / rated value</b>		kA 40

#### Installation/mounting/dimensions:

<b>Type of mounting</b>		fixed mounting
<b>Height</b>	mm	157.5
<b>Width</b>	mm	104.5
<b>Depth</b>	mm	106.5

#### Connections:

<b>Arrangement of electrical connectors / for main current circuit</b>		front side
<b>Design of the electrical connection / for main current circuit</b>		without connection accessoires

#### Certificates/approvals:

#### Further information:

##### Information- and Downloadcenter (Catalogs, Brochures,...)

<http://www.siemens.com/lowvoltage/catalogs>

##### Industry Mall (Online ordering system)

<http://www.siemens.com/lowvoltage/mall>

##### Service&Support (Manuals, Certificates, Characteristics, FAQs,...)

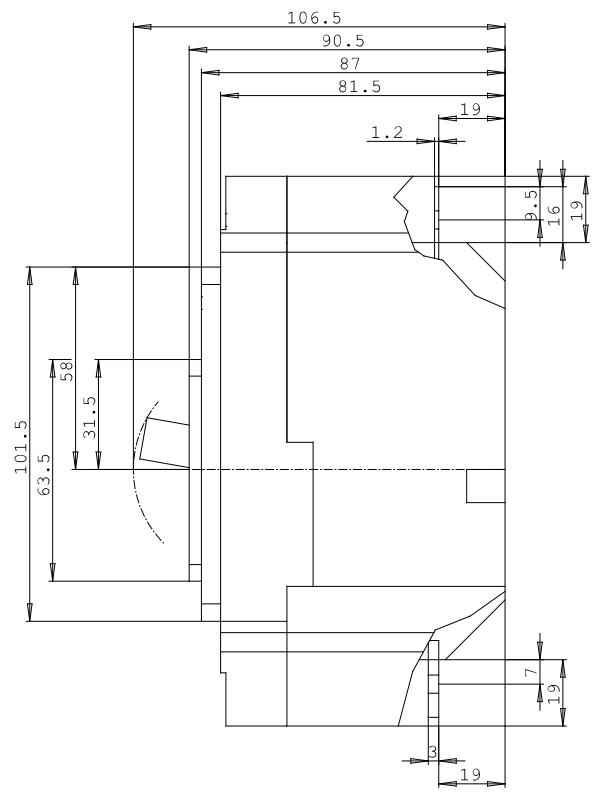
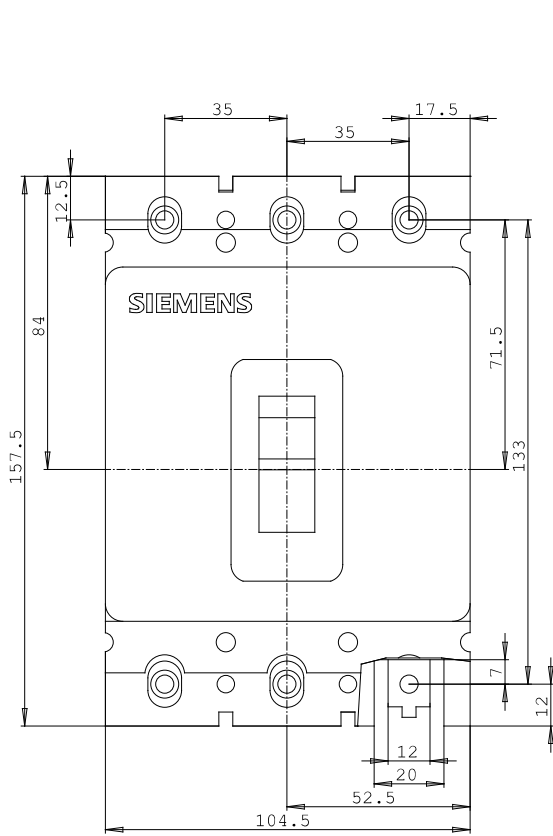
<http://support.automation.siemens.com/WW/view/en/3VL1108-1KM30-0AA0/all>

##### Image database (product images, 2D dimension drawings, 3D models, device circuit diagrams, ...)

[http://www.automation.siemens.com/bilddb/cax\\_en.aspx?mlfb=3VL1108-1KM30-0AA0](http://www.automation.siemens.com/bilddb/cax_en.aspx?mlfb=3VL1108-1KM30-0AA0)

##### CAX-Online-Generator

<http://www.siemens.com/cax>



last change:

Aug 9, 2012