

## Data sheet for SIMOTICS S-1FK2

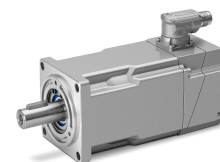


Figure similar

### MLFB-Ordering data

1FK2210-4AB10-1MA0

Client order no. :

Order no. :

Offer no. :

Remarks :

Item no. :

Consignment no. :

Project :

Basic motor data		Mechanical data	
Motor type	Permanent-magnet synchronous motor, Natural cooling, IP64	Design acc. to Code I	IM B5 (IM V1, IM V3)
Motor type	Compact	Vibration severity grade	Grade A
Static torque	40.00 Nm	Shaft height	100
Static current	11.8 A	Flange size (AB)	192 mm
Maximum torque	120.00 Nm	Centering ring (N)	180 mm
Maximum current	43.5 A	Hole circle (M)	215 mm
Maximum speed	2500 rpm	Screw-on hole (S)	14.0 mm
Rotor moment of inertia	133.000 kgcm <sup>2</sup>	Overall length (LB)	282 mm
Weight	31.0 kg	Diameter of shaft (D)	38 mm
		Length of shaft (E)	80 mm
		Length of flange diagonal (P)	244 mm
		Shaft extension	Fitted key

### Rated data

SINAMICS S210, 3AC 400V

Rated speed	1500 rpm
Rated torque	34.50 Nm
Rated current	10.4 A
Rated power	5.40 kW

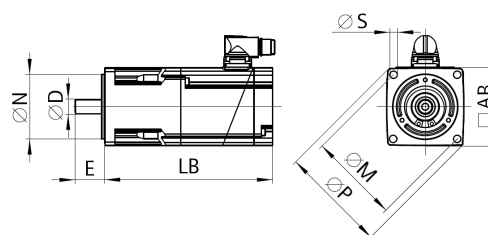


Figure similar

### Encoder system

Encoder system	Encoder AM22DQC: Absolute encoder 22 bit + 12 bit multiturn
----------------	---

### Motor connection

Connection type	OCC for S210
Connector size	M23



Figure similar

MLFB-Ordering data                      1FK2210-4AB10-1MA0

Holding brake	
Holding torque	55.00 Nm
Opening time	130 ms
Closing time	35 ms
Maximum single switching energy <sup>1)</sup>	8700.0 J
Service life, operating energy	3800000 J
Holding current	0.5 A
Break-induced current for 500 ms <sup>2)</sup>	1.5 A

<sup>1)</sup> Up to three consecutive emergency stops and up to 25% of all emergency stops as a Wmax high energy stop possible.

<sup>2)</sup> Typcial value for 20°C ambient temperature. At -15°C the break-induced currents can be increased by up to 30%.