

A

B

C

D

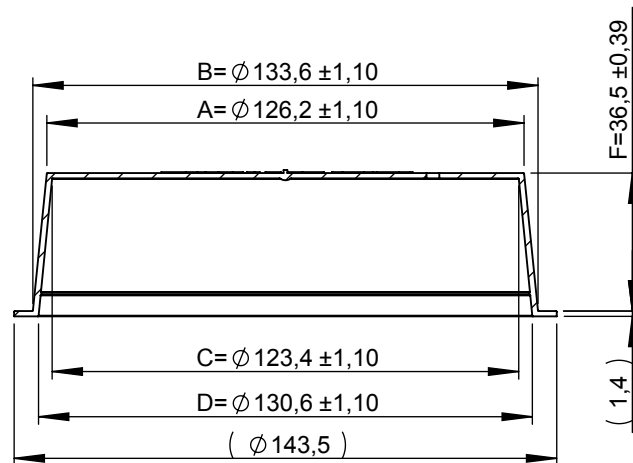
E

F

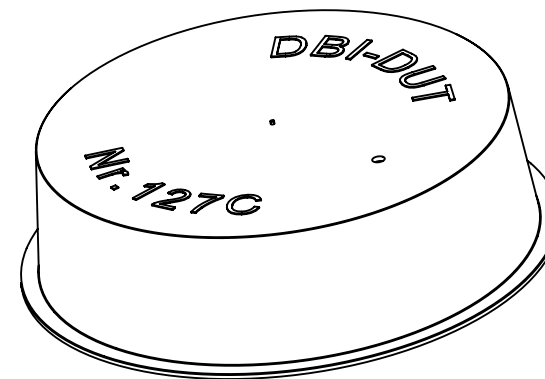
G

REVISIONS

REV.	DESCRIPTION	DATE	AUTHOR
1	Created according to measurement report per 08072004.	27-09-04	KPE
2	Comments added	09-06-2005	KPE
3	Part number changed from 410127C to NA1325A-AA	12-12-2007	TGJ
4	Drawing is according to measurement report per 24-08-2007.	03-09-2009	KV
5	Vent hole added.	22-10-2010	KV
6	Letters E and G removed together with belonging tolerances. Number put into brackets. "Part Weight" put into brackets too.	21-06-2013	KV

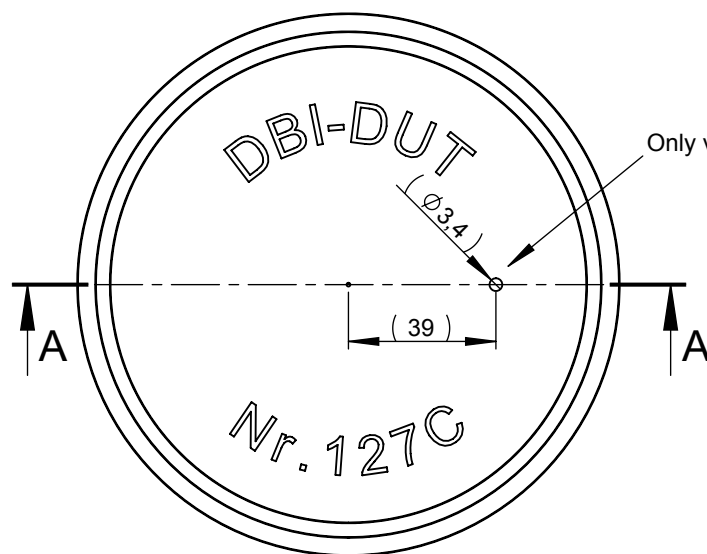


SECTION A-A



Cavity number

Scale 1:2



Only valid for: NA1325L-AA.

Comments:
Drawing is according to the
latest measurement report.

Comment:
Drawing is valid for cap
NA1325L-AA - with vent hole and
NA1325A-AA - without vent hole

Sheet: A4	Scale: 1:2	DBI A/S Project No: 02529	Drawing: NA1325A-AA
Material: PE-LD	Colour: All	DBI A/S Product No: NA1325A-AA	
Part Weight: (34,9) g	Part Surface Area: 597.27 cm ²	Product Name: Conical cap 1325	
DBI plastics Protect your business		Dimensions are given in mm. Dimensions without tolerances according to DS 812 / DIN16901	
		This drawing belongs to DBI Plastics A/S and may not be used or shown without permission.	