

**Product data**

Product code	<b>VB03-0008</b>	STK-code	<b>5203065</b>	EAN-code	<b>6410052030650</b>
Product name	<b>OSCU Al/Cu-lug 150mm<sup>2</sup>- Ø12</b>				

**Technical data**

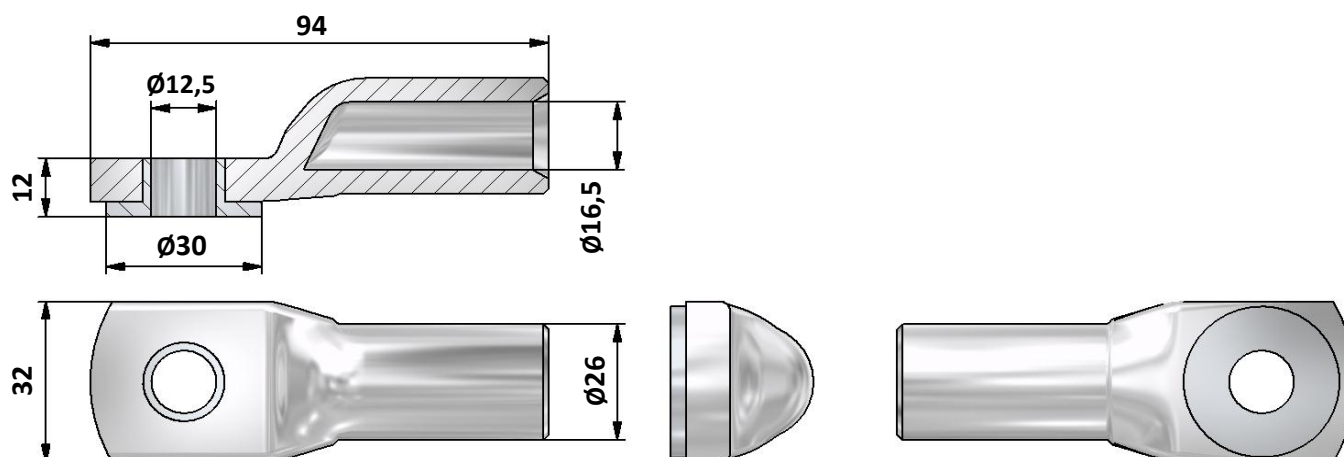
Cable material	<b>Al</b>	
Nominal cross section for cable	<b>150</b>	mm <sup>2</sup>
Weight	<b>133</b>	g



Standards	-
Material/ Coating	<b>Unplated Al/Tin plated Cu-ring</b>
Mounting/ Connection	<b>Crimping</b>

**Description**

OSCU is a crimping-type cable lug for aluminium cables. OSCU connector can be connected to tin-plated, silver-plated and unplated copper busbars. OSCU connector can be used also in damp locations. OSCU connectors are delivered with a conical washer and a flat pressure washer. Connector are also compatible with PEX cables. Installation can be made with tested and approved crimping tools.

**Drawing**

**Package**

Package	<b>Bag</b>	pcs/ package	<b>3</b>	Weight [Kg]	<b>0,40</b>
Length [mm]	<b>32</b>	Width [mm]	<b>140</b>	Height [mm]	<b>125</b>