

## RangeXtender RX 40



Laser receiver for all line lasers with RX-READY technology

Rev.1213



- **Fast alignment work** in close and long range
- With RX-READY, the laser lines pulsate at a high frequency. **This pulsation allows the range extender to detect laser lines up to a maximum of 40 m away.**
- **High-Speed:** Very fast detection of laser lines
- **The universal mount** enables the device to be attached to levelling staffs.
- **Head and side magnets**

### TECHNICAL DATA

#### LASER RECEPTION RANGE

max. 40 m radius

#### POWER SUPPLY

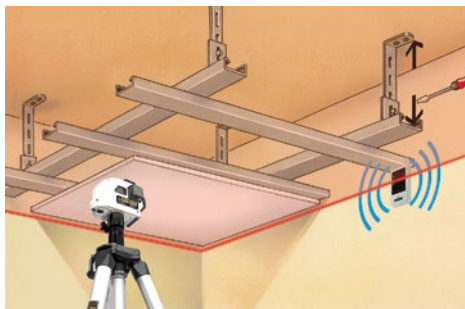
2 x 1.5 V alkaline batteries (type AAA)

#### DIMENSIONS (W x H x D)

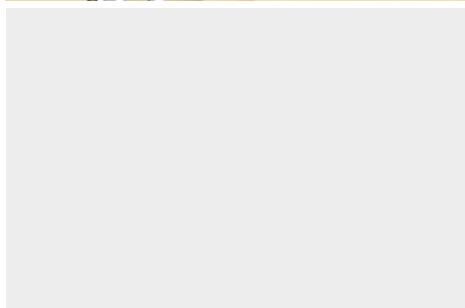
60 x 110 x 23 mm

#### WEIGHT (incl. batteries)

145 g



Not suitable for green lasers.



Max. reception range 40 m

Including universal mount

Head and side magnets



RangeXtender RX 40 including universal mount + batteries

ARTICLE	ARTICLE NO.	EAN CODE	PU
RangeXtender RX 40	033.40	4 021563 688036	5

