

Data sheet for SIMOTICS S-1FK2

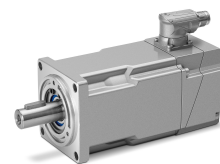


Figure similar

MLFB-Ordering data

1FK2103-4AG11-0MA0

Client order no. :

Order no. :

Offer no. :

Remarks :

Item no. :

Consignment no. :

Project :

Basic motor data		Mechanical data	
Motor type	Permanent-magnet synchronous motor, Natural cooling, IP65	Design acc. to Code I	IM B5 (IM V1, IM V3)
Motor type	High Dynamic	Vibration severity grade	Grade A
Static torque	1.27 Nm	Shaft height	30
Static current	2.4 A	Flange size (AB)	60 mm
Maximum torque	4.05 Nm	Centering ring (N)	50 mm
Maximum current	8.7 A	Hole circle (M)	70 mm
Maximum speed	7300 rpm	Screw-on hole (S)	5.5 mm
Rotor moment of inertia	0.158 kgcm ²	Overall length (LB)	155 mm
Weight	2.1 kg	Diameter of shaft (D)	14 mm
		Length of shaft (E)	30 mm
		Length of flange diagonal (P)	81 mm
		Shaft extension	Plain shaft

Rated data

SINAMICS S210, 1AC 230V

Rated speed	3000 rpm
Rated torque	1.27 Nm
Rated current	2.4 A
Rated power	0.40 kW

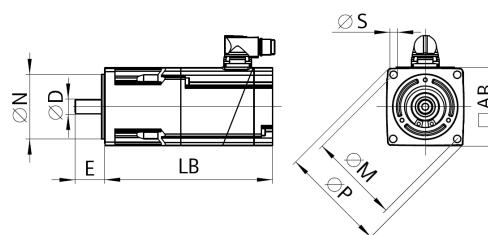


Figure similar

Encoder system

Encoder system	Encoder AM22DQC: Absolute encoder 22 bit + 12 bit multiturn
----------------	---

Motor connection

Connection type	OCC for S210
Connector size	M12

1FK2103-4AG11-0MA0

Figure similar

¹⁾ Up to three consecutive emergency stops and up to 25% of all emergency stops as a Wmax high energy stop possible.

²⁾ Typical value for 20°C ambient temperature. At -15°C the break-induced currents can be increased by up to 30%.