

Data sheet for SIMOTICS S-1FK2

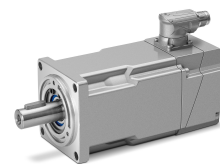


Figure similar

MLFB-Ordering data

1FK2105-6AF11-0MA0

Client order no. :

Order no. :

Offer no. :

Remarks :

Item no. :

Consignment no. :

Project :

Basic motor data		Mechanical data	
Motor type	Permanent-magnet synchronous motor, Natural cooling, IP65	Design acc. to Code I	IM B5 (IM V1, IM V3)
Motor type	High Dynamic	Vibration severity grade	Grade A
Static torque	8.00 Nm	Shaft height	52
Static current	6.7 A	Flange size (AB)	105 mm
Maximum torque	24.00 Nm	Centering ring (N)	95 mm
Maximum current	24.0 A	Hole circle (M)	115 mm
Maximum speed	6000 rpm	Screw-on hole (S)	9.0 mm
Rotor moment of inertia	3.500 kgcm ²	Overall length (LB)	244 mm
Weight	8.7 kg	Diameter of shaft (D)	19 mm
		Length of shaft (E)	40 mm
		Length of flange diagonal (P)	135 mm
		Shaft extension	Plain shaft

Rated data

SINAMICS S210, 3AC 400V

Rated speed	3000 rpm
Rated torque	6.60 Nm
Rated current	5.6 A
Rated power	2.10 kW

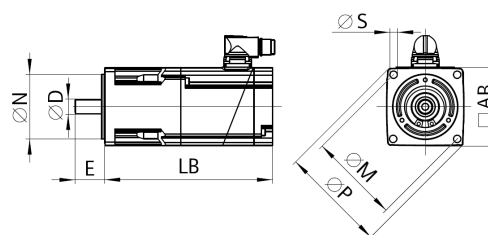


Figure similar

Encoder system

Encoder system	Encoder AM22DQC: Absolute encoder 22 bit + 12 bit multiturn
----------------	---

Motor connection

Connection type	OCC for S210
Connector size	M17

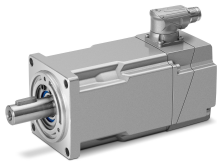


Figure similar

MLFB-Ordering data 1FK2105-6AF11-0MA0

Holding brake	
Holding torque	8.00 Nm
Opening time	35 ms
Closing time	15 ms
Maximum single switching energy ¹⁾	570.0 J
Service life, operating energy	284000 J
Holding current	0.3 A
Break-induced current for 500 ms ²⁾	1.1 A

¹⁾ Up to three consecutive emergency stops and up to 25% of all emergency stops as a Wmax high energy stop possible.

²⁾ Typcial value for 20°C ambient temperature. At -15°C the break-induced currents can be increased by up to 30%.