

## Data sheet for SIMOTICS S-1FK2

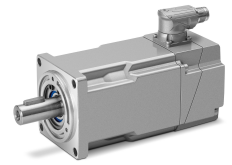


Figure similar

### MLFB-Ordering data

1FK2102-0AG10-0SA0

Client order no. :

Order no. :

Offer no. :

Remarks :

Item no. :

Consignment no. :

Project :

Basic motor data		Mechanical data	
Motor type	Permanent-magnet synchronous motor, Natural cooling, IP64	Design acc. to Code I	IM B5 (IM V1, IM V3)
Motor type	High Dynamic	Vibration severity grade	Grade A
Static torque	0.16 Nm	Shaft height	20
Static current	0.8 A	Flange size (AB)	40 mm
Maximum torque	0.56 Nm	Centering ring (N)	30 mm
Maximum current	3.1 A	Hole circle (M)	46 mm
Maximum speed	8000 rpm	Screw-on hole (S)	4.5 mm
Rotor moment of inertia	0.029 kgcm <sup>2</sup>	Overall length (LB)	121 mm
Weight	0.7 kg	Diameter of shaft (D)	8 mm
		Length of shaft (E)	25 mm
		Length of flange diagonal (P)	54 mm
		Shaft extension	Plain shaft

### Rated data

SINAMICS S210, 1AC 230V

Rated speed	3000 rpm
Rated torque	0.16 Nm
Rated current	0.8 A
Rated power	0.05 kW

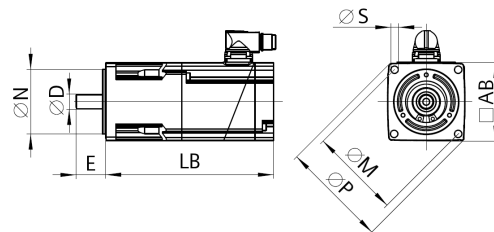


Figure similar

### Encoder system

Encoder system	Encoder AS22DQC: Absolute encoder single turn 22 bit
----------------	--

### Motor connection

Connection type	OCC for S210
Connector size	M12

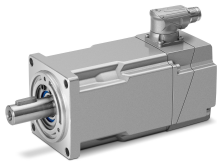


Figure similar

MLFB-Ordering data                    1FK2102-0AG10-0SA0

Holding brake	
Holding torque	0.32 Nm
Opening time	25 ms
Closing time	8 ms
Maximum single switching energy <sup>1)</sup>	7.4 J
Service life, operating energy	1750 J
Holding current	0.1 A
Break-induced current for 500 ms <sup>2)</sup>	0.6 A

<sup>1)</sup> Up to three consecutive emergency stops and up to 25% of all emergency stops as a Wmax high energy stop possible.

<sup>2)</sup> Typcial value for 20°C ambient temperature. At -15°C the break-induced currents can be increased by up to 30%.