

Product data

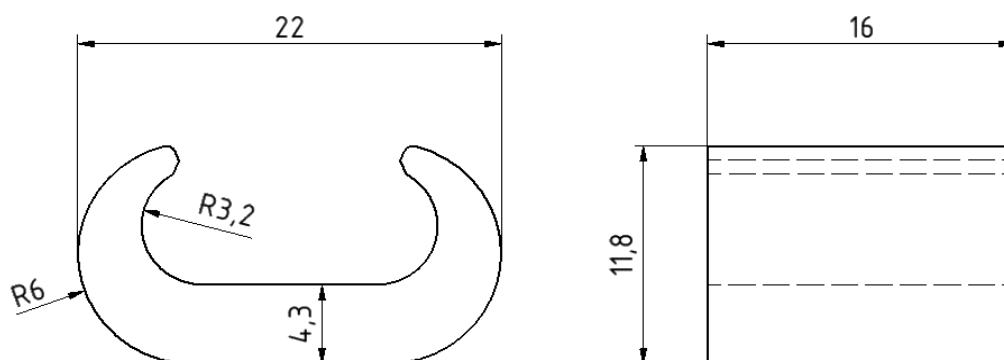
Product code	VA05-0002	STK-code	5040306	EAN-code	6410050403067
Product name	C-connector C6				
Wires	16-25/16-25				

Technical data

Nominal current	Cu	-	A
	Al	-	A
Nominal voltage		-	V
Number of pole		1	pcs
Max. Cross section		25	mm ²
Main conductor	16-25 mm ²	1	No of crimps
Branch conductor	16-25 mm ²	1	No of crimps
Max. Operating temperature		-	°C
Weight		18,2	g
IP-protection		-	
Standards	-		
Color/ Coating	Copper, no coating		
Tools	Crimping dies BC6 (Elpress)		


Description

C-sleeves are designed for connecting, branching and extending of copper cables. C-Sleeves is for copper to copper connections.

Drawing

Package

Package	Box	pcs/ package	100
Weight [Kg]	1,82		
Length [mm]	85	Width [mm]	144
		Height [mm]	85