



Similar to image

EMERG. STOP SWITCH 3-POLE IU=25,  
P/AC-23A AT 400V=9.5KW FLOOR MOUNTING DIN  
RAIL/TWO-HOLE MOUNTING ROTARY ACTUATOR  
RED/YELLOW (EMERG. STOP)

General technical details:

|   |    |                                 |
|---|----|---------------------------------|
| product brand name                          |    | SETRON                          |
| product designation                         |    | main and EMERGENCY-OFF switches |
| Type from device                            |    | fixed mounting                  |
| Design of the operating mechanism           |    | rotary actuator, red/yellow     |
| Protection class IP                         |    | IP65                            |
| Number of poles                             |    | 3                               |
| Acceptability for application               |    |                                 |
| • switch disconnecter                       |    | Yes                             |
| • main switch                               |    | Yes                             |
| • safety cut-out switch                     |    | Yes                             |
| • emergency stop switch                     |    | Yes                             |
| • maintenance/repair switch                 |    | Yes                             |
| Product equipment / interlock               |    | Yes                             |
| Type of the driving mechanism / motor drive |    | No                              |
| Product extension / optional                |    |                                 |
| • motor drive                               |    | No                              |
| • voltage trigger                           |    | No                              |
| Ambient temperature / during operating      | °C | -25 ... +55                     |

|   |   |             |
|---|---|-------------|
| Insulation voltage / rated value  | V | 690         |
| Impulse voltage resistance / rated value  | V | 6,000       |
| Active power loss / per conductor / typical   | W | 1.1         |
| Mechanical operating cycles as operating time / of the main contacts / typical              |   | 100,000     |
| Protection against electrical shock   |   | finger-safe |
| Item designation / according to DIN EN 61346-2  |   | S           |
| Item designation / according to DIN 40719 extendable after IEC 204-2 / according to IEC 750 |   | S           |

#### Main circuit:

|  |     |           |
|--|-----|-----------|
| Continuous current / rated value   | A   | 25        |
| Operating current / at AC-21 / rated value   | A   | 25        |
| Short-time current resistance (I <sub>cw</sub> ) / at 690 V / limited to 1 s / rated value | A   | 640       |
| Operating frequency  | Hz  | 50 ... 60 |
| Operating voltage / at 50/60 Hz / for AC / rated value                                     | V   | 690       |
| Service power / at AC-3  |     |           |
| • at 400 V / rated value   | kW  | 7.5       |
| • at 690 V / rated value   | kW  | 7.5       |
| Service power / at AC-23 A   |     |           |
| • at 400 V / rated value   | kW  | 9.5       |
| • at 690 V / rated value   | kW  | 9.5       |
| Operating cycles / maximum   | 1/h | 50        |

#### Auxiliary circuit:

|  |   |     |
|--|---|-----|
| Number of NC contacts / for auxiliary contacts                   |   | 0   |
| Number of NO contacts / for auxiliary contacts                   |   | 0   |
| Number of change-over switches / for auxiliary contacts          |   | 0   |
| Continuous current / of the auxiliary contact / rated value      | A | 10  |
| Operating voltage / of the auxiliary contacts / for AC / maximum | V | 500 |
| Insulation voltage / of the auxiliary switch / rated value       | V | 500 |

#### Short-circuit:

|   |  |                  |
|---|--|------------------|
| Design of the fuse link / for short-circuit protection of the main circuit / necessary    |  | fuse gL/gG: 25 A |
| Design of the fuse link / for short-circuit protection of the auxiliary switch / required |  | fuse gL/gG: 10 A |

#### Installation/mounting/dimensions:

|  |  |                |
|--|--|----------------|
| Type of mounting                       |  | floor mounting |
| • front mounting                       |  | No             |
| • front mounting with central fixation |  | No             |

|                                       |    |       |
|---------------------------------------|----|-------|
| • front mounting with 4-hole fixation |    | No    |
| • series installation                 |    | Yes   |
| • Rail installation                   |    | No    |
| <b>Width</b>                          | mm | 67    |
| <b>Height</b>                         | mm | 83    |
| <b>Depth</b>                          | mm | 451.5 |

| Connection type:  |  |   |
|---|--|---|
| <b>Design of the electrical connection / for main current circuit</b>   |  | connection terminals  |
| <b>Design of the electrical connection / for auxiliary contact</b>  |  | connection terminals  |
| <b>Type of the connectable conductor cross-section / for main contacts</b> <ul style="list-style-type: none"> <li>• solid</li> <li>• finely stranded / with conductor end processing</li> <li>• stranded</li> </ul> |  | 1.5 ... 16 mm <sup>2</sup><br>10 mm <sup>2</sup><br>1.5 ... 16 mm <sup>2</sup>                                      |
| <b>Type of connectable conductor cross section / for auxiliary contacts</b> <ul style="list-style-type: none"> <li>• solid</li> <li>• stranded</li> </ul>   |  | 2x (0.75 to 2.5 mm <sup>2</sup> ), 1x 4 mm <sup>2</sup><br>2x (0.75 ... 2.5 mm <sup>2</sup> ), 1x 4 mm <sup>2</sup> |

| Certificates/approvals:  |                 |                                       |
|--|-----------------|---------------------------------------|
| <b>Verification of suitability</b>   |                 | CSA / UL / CCC / GL / LRS / DNV / PRS |
| <b>Conductor cross section that can be connected / for main contacts / solid / minimum</b>   | mm <sup>2</sup> | 1.5                                   |
| <b>Conductor cross section that can be connected / for main contacts / solid / maximum</b>   | mm <sup>2</sup> | 16                                    |
| <b>Conductor cross section that can be connected / for main contacts / stranded / minimum</b>  | mm <sup>2</sup> | 1.5                                   |
| <b>Conductor cross section that can be connected / for main contacts / stranded / maximum</b>  | mm <sup>2</sup> | 16                                    |
| <b>Conductor cross-section that can be connected / for main contacts / stranded wire / with conductor end processing / maximum</b>     | mm <sup>2</sup> | 10                                    |
| <b>Conductor cross section that can be connected / for auxiliary contacts / solid / minimum</b>  | mm <sup>2</sup> | 0.75                                  |
| <b>Conductor cross section that can be connected / for auxiliary contacts / solid / maximum</b>  | mm <sup>2</sup> | 4                                     |
| <b>Conductor cross-section that can be connected / for auxiliary contact / stranded wire / with conductor end processing / minimum</b> | mm <sup>2</sup> | 0.75                                  |
| <b>Conductor cross-section that can be connected / for auxiliary contact / stranded wire / with conductor end processing / maximum</b> | mm <sup>2</sup> | 2.5                                   |
| <b>Conductor cross section that can be connected / for auxiliary contacts / stranded / min.</b>  | mm <sup>2</sup> | 0.75                                  |

Conductor cross section that can be connected / for auxiliary contacts / stranded / max.

mm<sup>2</sup>

4

## Certificates/approvals:

### General Product Approval



CCC



CSA



GOST



UL

### Test Certificates

[Special Test Certificate](#)

### Shipping Approval



DNV



GL



LRS



PRS

### other

[Declaration of Conformity](#)



UL

## Further information:

### Information- and Downloadcenter (Catalogs, Brochures,...)

<http://www.siemens.com/lowvoltage/catalogs>

### Industry Mall (Online ordering system)

<http://www.siemens.com/lowvoltage/mall>

### Service&Support (Manuals, Certificates, Characteristics, FAQs,...)

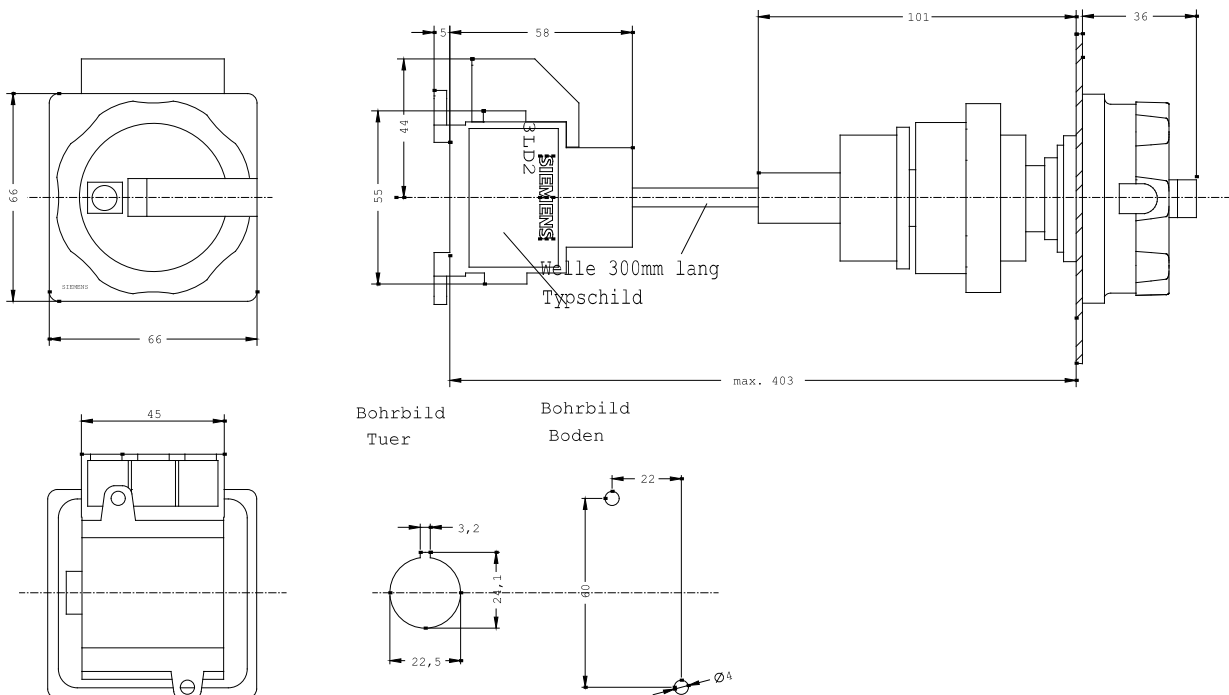
<http://support.automation.siemens.com/WW/view/en/3LD2144-0TK53/all>

### Image database (product images, 2D dimension drawings, 3D models, device circuit diagrams, ...)

[http://www.automation.siemens.com/bilddb/cax\\_en.aspx?mlfb=3LD2144-0TK53](http://www.automation.siemens.com/bilddb/cax_en.aspx?mlfb=3LD2144-0TK53)

### CAX-Online-Generator

<http://www.siemens.com/cax>



last change:

Apr 9, 2012