



BASIC SWITCH FOR POSITION SWITCH 3SE5162,  
METAL ENCLOSURE XL, 56MM WIDE DEVICE  
CONNECTION 3X(M20X1:5),  
IP66/IP67 2X (1NO/1NC) SLOW-ACTION CONTACT  
WITHOUT ACTUATOR HEAD

### Manufacturer article number

- of the basic unit included in the scope of supply

[3SE5162-0BA00](#)

### General technical details:

|                                |   |   |
|--------------------------------|---|---|
| <b>product designation</b>     |   | basic switch for standard position switches |
| <b>Insulation voltage</b>      |   |   |
| • rated value                  | V | 400   |
| <b>Degree of pollution</b>     |   | class 3                                     |
| <b>Thermal current</b>         | A | 10  |
| <b>Operating current</b>       |   |   |
| • at AC-15                     |   |   |
| • at 24 V / rated value        | A | 6   |
| • at 125 V / rated value       | A | 6   |
| • at 230 V / rated value       | A | 3   |
| • at 400 V / rated value       | A | 4   |
| • at DC-13                     |   |   |
| • at 24 V / rated value        | A | 3   |
| • at 125 V / rated value       | A | 0.55  |
| • at 230 V / rated value       | A | 0.27  |
| <b>Continuous current</b>      |   |   |
| • of the slow DIAZED fuse link | A | 6   |

|   |            |  |
|---|------------|--|
| • of the quick DIAZED fuse link   | A          | 10   |
| • of the C characteristic circuit breaker                                     | A          | 1  |
| <b>Mechanical operating cycles as operating time</b>                          |            |  |
| • typical   |            | 5,000,000  |
| <b>Electrical operating cycles as operating time</b>                          |            |  |
| • with contactor 3RH11, 3RT1016, 3RT1017, 3RT1024, 3RT1025, 3RT1026 / typical |            | 5,000,000  |
| • at AC-15 / at 230 V / typical   |            | 100,000  |
| <b>Electrical operating cycles in one hour</b>                                |            |  |
| • with contactor 3RH11, 3RT1016, 3RT1017, 3RT1024, 3RT1025, 3RT1026           |            | 6,000  |
| <b>Repeat accuracy</b>  | mm         | 0.05   |
| <b>Design of the contact element</b>  |            | slow-action contacts   |
| <b>Number of NC contacts</b>  |            |  |
| • for auxiliary contacts  |            | 2  |
| <b>Design of the switching function</b>                                       |            | Positive opening with appropriate positive opening actuator head |
| <b>Number of NO contacts</b>  |            |  |
| • for auxiliary contacts  |            | 2  |
| <b>Resistance against vibration</b>   |            | 0.35 mm / 5g   |
| <b>Resistance against shock</b>   |            | 30g / 11 ms  |
| <b>Ambient temperature</b>  |            |  |
| • during operating  | °C         | -25 ... 85   |
| • during storage  | °C         | -40 ... 90   |
| <b>Width of the sensor</b>  | mm         | 56   |
| <b>material</b>   |            |  |
| • of the housing  |            | metal  |
| <b>Actuating speed</b>  | mm/s / m/s | 0.4 ... 2.5  |
| <b>Minimum actuating force / in activation direction</b>                      | N          | 30   |
| <b>Protection class IP</b>  |            | IP66/IP67  |
| <b>Built in orientation</b>   |            | any  |
| <b>Cable gland version</b>  |            | 3 x (M20 x 1.5)  |
| <b>Design of the electrical connection</b>                                    |            | screw-type terminals   |
| <b>Item designation</b>   |            |  |
| • according to DIN 40719 extendable after IEC 204-2                           |            | S  |
| • according to DIN EN 61346-2   |            | B  |

#### Certificates/approvals:

**Further information:****Information- and Downloadcenter (Catalogs, Brochures,...)**

<http://www.siemens.com/industrial-controls/catalogs>

**Industry Mall (Online ordering system)**

<http://www.siemens.com/industrial-controls/mall>

**CAX-Online-Generator**

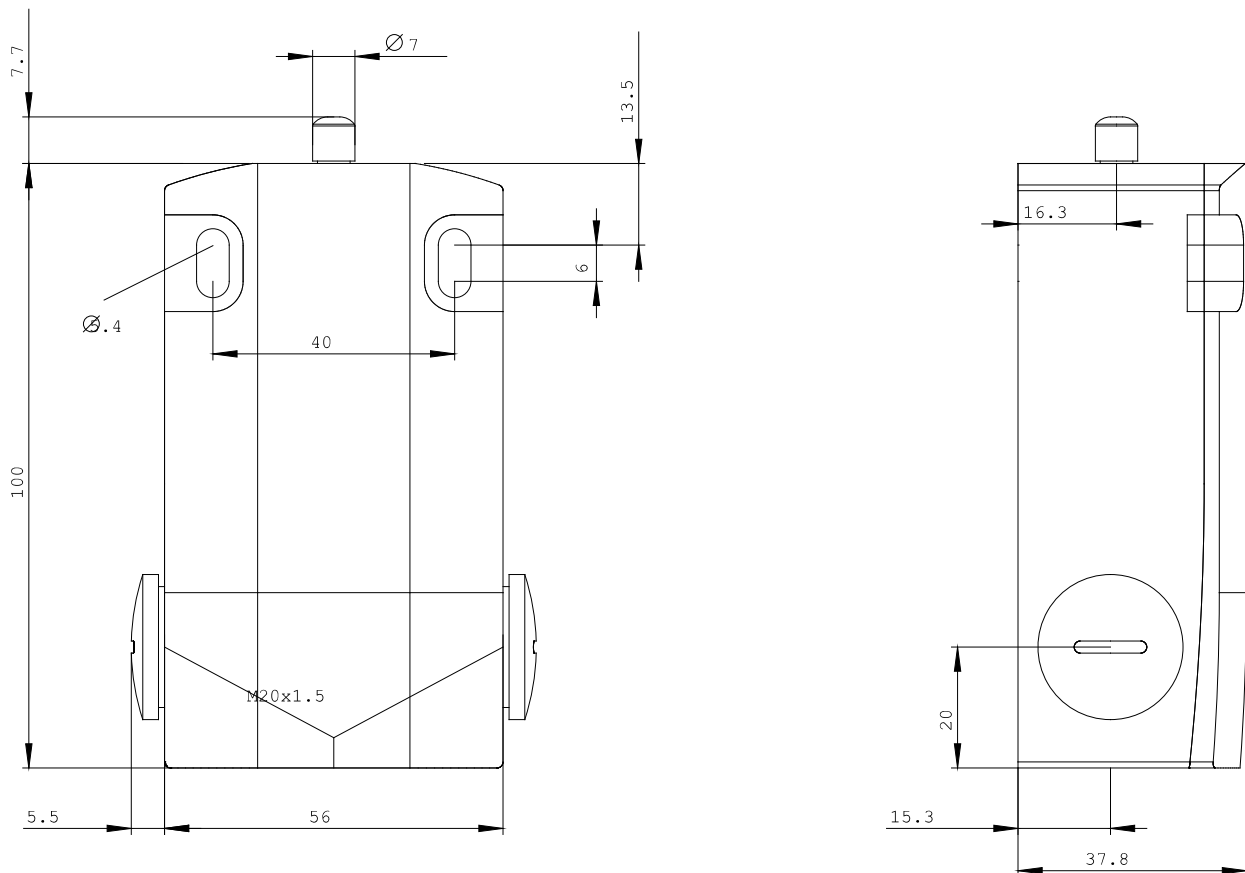
<http://www.siemens.com/cax>

**Service&Support (Manuals, Certificates, Characteristics, FAQs,...)**

<http://support.automation.siemens.com/WW/view/en/3SE5162-0BA00/all>

**Image database (product images, 2D dimension drawings, 3D models, device circuit diagrams, ...)**

[http://www.automation.siemens.com/bilddb/cax\\_en.aspx?mlfb=3SE5162-0BA00](http://www.automation.siemens.com/bilddb/cax_en.aspx?mlfb=3SE5162-0BA00)



last change:

Nov 24, 2011