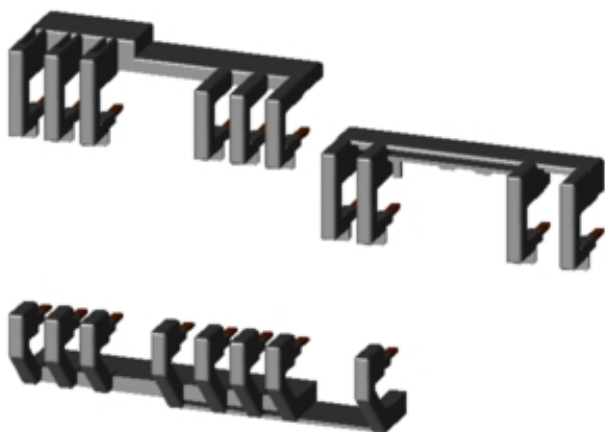


WIRING KIT,
SPRING-LOADED ELECTRICAL AND MECHANICAL,
INCL. MECH. INTERLOCK,
FOR REVERS. STARTERS, SIZE S00



General technical data:

Product brand name		SIRIUS
product designation		wiring module reversing contactors S00, spring-loaded terminal
Size of the contactor		S00
Design of the product		actuating voltage contactor: AC and DC
Acceptability for application		reversing starter kit

Installation/mounting/dimensions:

Type of mounting		clip-on
Height	mm	8
Depth	mm	9.8

Certificates/approvals:

General Product Approval



[ROSTEST](#)



Shipping Approval



Shipping Approval

other



[Manufacturer](#)

[other](#)

Further information:

Information- and Downloadcenter (Catalogs, Brochures,...)

<http://www.siemens.com/industrial-controls/catalogs>

Industry Mall (Online ordering system)

<http://www.siemens.com/industrial-controls/mall>

CAX-Online-Generator

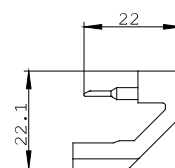
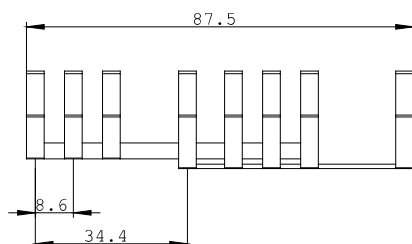
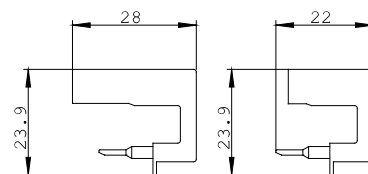
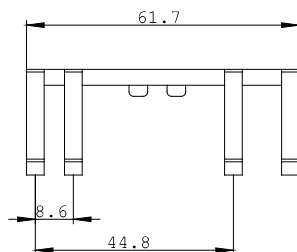
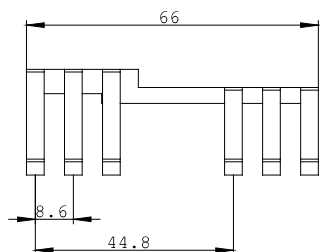
<http://www.siemens.com/cax>

Service&Support (Manuals, Certificates, Characteristics, FAQs,...)

<http://support.automation.siemens.com/WW/view/en/3RA2913-2AA2/all>

Image database (product images, 2D dimension drawings, 3D models, device circuit diagrams, ...)

http://www.automation.siemens.com/bilddb/cax_en.aspx?mlfb=3RA2913-2AA2



last change:

Oct 21, 2011