



LOAD FEEDER FUSELESS DIRECT START,
AC 400V, SZ S00 9...12.5A,
AC 230V SPRING-LOADED CONNECTION FOR RAIL-
MOUNTING,
TYPE OF COORDINATION 1,
IQ = 150KA 1NO (CONTACTOR)

General technical data:

Product brand name		SIRIUS
product designation		non-fused load feeders 3RA2
Design of the product		direct starter
Size of the load feeder		S00
Protection class IP / on the front		IP20
Degree of pollution		3
Insulation voltage / rated value	V	690
Installation altitude / at a height over sea level / maximum	m	2,000
Ambient temperature <ul style="list-style-type: none"> during transport during storage during operating 	°C	-55 ... 80 -55 ... 80 -20 ... 60
Impulse voltage resistance / rated value	kV	6
Active power loss / per conductor / typical	W	3.5
Item designation <ul style="list-style-type: none"> according to DIN 40719 extendable after IEC 204-2 / according to IEC 750 according to DIN EN 61346-2 		Q Q
Type of assignment		1

Mechanical operating cycles as operating time / of the contactor • typical		10,000,000
Manufacturer article number • of the circuit-breakers included in the scope of supply • of the contactor included in the scope of supply • of the link module included in the scope of supply		3RV2011-1KA20 3RT2017-2AP01 3RA2911-2AA00
Design of the switching contact		mechanical
Type of the motor protection		bimetal
Adjustable response current • of the current-dependent overload release	A	9 ... 12.5

Communication:		
Product function / bus-communication		No
Protocol / will be supported • AS interface protocol • PROFIBUS DP protocol • PROFINET protocol		No No No
Product extension / function module for communication		No

Main circuit:		
Number of poles / for main current circuit		3
Number of NC contacts / for main contacts		0
Number of NO contacts / for main contacts		3
Operating voltage / at AC-3 / rated value / maximum	V	690
Operating current • at AC-1 / at 400 V / rated value • at AC-2 / at 400 V / rated value • at AC-3 / at 400 V / rated value • at AC-4 / at 400 V / rated value	A A A A	12 11.5 11.5 11.5
Service power • at AC-2 / at 400 V / rated value • at AC-3 • at 400 V / rated value • at 500 V / rated value • at 690 V / rated value • at AC-4 / at 400 V / rated value	W W W W W	5,500 5,500 5,500 7,500 5,500
Off-load operating frequency	1/h	10,000
Frequency of operation • at AC-1 / according to IEC 60947-6-2 / maximum • at AC-2 / according to IEC 60947-6-2 / maximum	1/h 1/h	1,000 750

- at AC-3 / according to IEC 60947-6-2 / maximum
- at AC-4 / according to IEC 60947-6-2 / maximum

1/h	750
1/h	250

Control circuit:

Type of voltage / of the controlled supply voltage

AC

Control supply voltage frequency

- 1 / rated value

Hz

50

Control supply voltage / 1

- at 50 Hz / for AC / rated value
- at 60 Hz / for AC / rated value

V

230

V

230

Apparent holding power / of the solenoid / for AC

V·A

5.7

Inductive power factor / with the pull-in power of the coil

0.28

Auxiliary circuit:

Product extension / auxiliary switch

Yes

Number of NC contacts / for auxiliary contacts

0

Number of NO contacts / for auxiliary contacts

1

Number of change-over switches / for auxiliary contacts

0

Inputs/ Outputs:

Number of digital inputs

0

Short-circuit:

Product function / short circuit protection

Yes

Design of the short-circuit protection

circuit-breakers

Breaking capacity limit short-circuit current (Icu)

- at 400 V / rated value
- at 500 V / rated value
- at 690 V / rated value

A

100,000

A

42,000

A

4,000

Installation/mounting/dimensions:

Built in orientation

vertical

Type of mounting

screw and snap-on mounting onto 35 mm standard mounting rail

Width

mm

45

Height

mm

197.6

Depth

mm

97.1

Distance, to be maintained, to the ranks assembly

- forwards
- backwards
- upwards
- downwards

mm

0

mm

0

mm

20

mm

30

• sideways	mm	0
Distance, to be maintained, to earthed part		
• forwards	mm	0
• backwards	mm	0
• upwards	mm	20
• downwards	mm	10
• sideways	mm	9
Distance, to be maintained, conductive elements		
• forwards	mm	0
• backwards	mm	0
• upwards	mm	20
• downwards	mm	10
• sideways	mm	9

Connections:

Design of the electrical connection		
• for main current circuit		spring-loaded terminals
• for auxiliary and control current circuit		spring-loaded terminals
Type of the connectable conductor cross-section		
• for main contacts		
• solid		2x (0.5 ... 4 mm ²)
• stranded		2x (0.5 ... 4 mm ²)
• finely stranded		
• with conductor end processing		2x (0.5 ... 2.5 mm ²)
• without conductor final cutting		2x (0.5 ... 2.5 mm ²)
• for AWG conductors / for main contacts		2x (20 ... 12)
• for auxiliary contacts		
• solid		2x (0.5 ... 4 mm ²)
• finely stranded		
• with conductor end processing		2x (0.5 ... 2.5 mm ²)
• without conductor final cutting		2x (0.5 ... 2.5 mm ²)
• for AWG conductors / for auxiliary contacts		2x (20 ... 12)

Certificates/approvals:

Verification of suitability		CE / UL / CSA / CCC
Varification of suitability / ATEX		No

General Product Approval	For use in hazardous locations	Test Certificates
---------------------------------	---------------------------------------	--------------------------

[ROSTEST](#)



[DEKRA EXAM, DMT](#)

[Manufacturer](#)

Shipping Approval

other



ABS



PRS



RINA

[Manufacturer](#)

[other](#)

UL/CSA ratings

yielded mechanical performance (hp)

- for single-phase squirrel cage motors
 - at 110/120 V / rated value
 - at 230 V / rated value
- for three-phase squirrel cage motors
 - at 200/208 V / rated value
 - at 220/230 V / rated value
 - at 460/480 V / rated value
 - at 575/600 V / rated value

hp	0.5
hp	2
hp	3
hp	3
hp	7.5
hp	10

Operating current (FLA) / for three-phase squirrel cage motors

- at 480 V / rated value
- at 600 V / rated value

A	11
A	11

Contact rating designation / for auxiliary contacts / according to UL

A600 / Q600

Safety:

B10 value / with high demand rate

- according to SN 31920

1,000,000

Failure rate (FIT value) / with low demand rate

- according to SN 31920

FIT 150

Proportion of dangerous failures

- with low demand rate / according to SN 31920
- with high demand rate / according to SN 31920

%	40
%	75

T1 value / for proof test interval or service life

- according to IEC 61508

a 10

Protection against electrical shock

finger-safe

Further information:

Information- and Downloadcenter (Catalogs, Brochures,...)

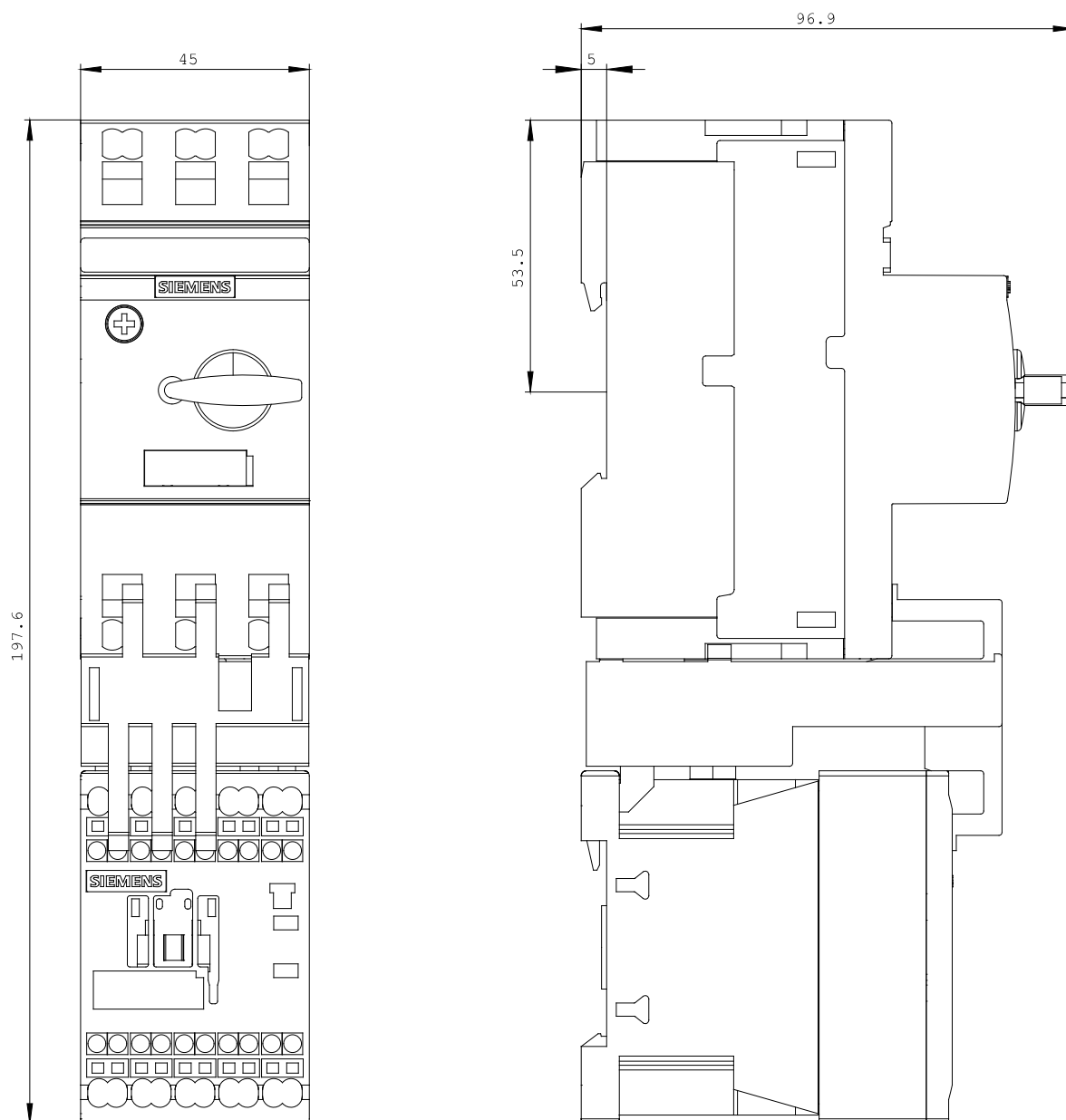
<http://www.siemens.com/industrial-controls/catalogs>

Industry Mall (Online ordering system)
<http://www.siemens.com/industrial-controls/mall>

CAX-Online-Generator
<http://www.siemens.com/cax>

Service&Support (Manuals, Certificates, Characteristics, FAQs,...)
<http://support.automation.siemens.com/WW/view/en/3RA2110-1KE17-1AP0/all>

Image database (product images, 2D dimension drawings, 3D models, device circuit diagrams, ...)
http://www.automation.siemens.com/bilddb/cax_en.aspx?mlfb=3RA2110-1KE17-1AP0





last change:

Oct 24, 2011