

AUXILIARY SWITCH, 2 NC CONTACTS,  
CONNECTION AUXILIARY CIRCUIT: SCREW TERMINAL,

### General technical data:

<b>Product brand name</b>		SIRIUS
<b>product designation</b>		auxiliary switch compact feeder
<b>Protection class IP</b>		IP20
<b>Relative humidity</b>		
• during operating phase	%	10 ... 90
<b>Ambient temperature</b>		
• during transport	°C	-55 ... 80
• during storage	°C	-55 ... 80
• during operating	°C	-20 ... 60
<b>Item designation</b>		
• according to DIN EN 61346-2		K
• according to DIN 40719 extendable after IEC 204-2 / according to IEC 750		K

### Auxiliary circuit:

<b>Number of NC contacts</b>		
• for auxiliary contacts		2
<b>Number of NO contacts</b>		
• for auxiliary contacts		0

### Installation/mounting/dimensions:

<b>Width</b>	mm	45
<b>Height</b>	mm	32
<b>Depth</b>	mm	25

### Connections:

<b>Wire stripping length</b>	mm	10
<b>Design of the electrical connection</b>		
• for auxiliary and control current circuit		screw-type terminals
<b>Design of screw-type connection</b>		
• for auxiliary contacts		M6
<b>Tightening torque / for auxiliary contacts</b>		
• with screw-type terminals	N·m	0.8 ... 1.2

<b>Type of the connectable conductor cross-section / for auxiliary contacts</b> <ul style="list-style-type: none"> <li>• solid</li> <li>• finely stranded <ul style="list-style-type: none"> <li>• with conductor end processing</li> </ul> </li> </ul>		max. 2x (1 ... 4 mm <sup>2</sup> )  2x (0.5 ... 1.5 mm <sup>2</sup> ), 2x (0.75 ... 2.5 mm <sup>2</sup> )
<b>Type of the connectable conductor cross-section / for AWG conductors</b> <ul style="list-style-type: none"> <li>• for auxiliary contacts</li> </ul>		2x (20 ... 16), 2x (18 ... 14), 1x 12

#### Certificates/approvals:

##### Verification of suitability

IEC / EN 60947-6-2

##### General Product Approval

##### Functional Safety / Safety of Machinery



[ROSTEST](#)

[other](#)

##### Shipping Approval

**other**



[Manufacturer](#)

[other](#)

#### Further information:

##### Information- and Downloadcenter (Catalogs, Brochures,...)

<http://www.siemens.com/industrial-controls/catalogs>

##### Industry Mall (Online ordering system)

<http://www.siemens.com/industrial-controls/mall>

##### CAX-Online-Generator

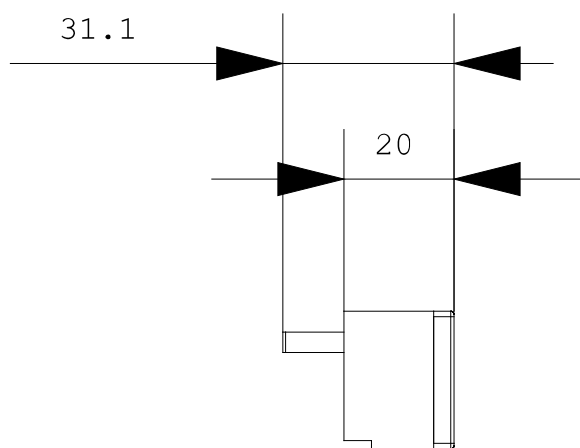
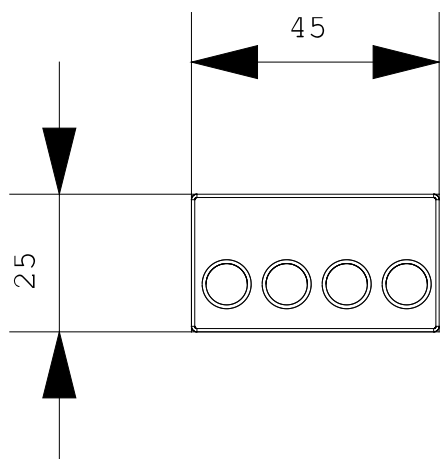
<http://www.siemens.com/cax>

##### Service&Support (Manuals, Certificates, Characteristics, FAQs,...)

<http://support.automation.siemens.com/VW/view/en/3RA6912-1A/all>

##### Image database (product images, 2D dimension drawings, 3D models, device circuit diagrams, ...)

[http://www.automation.siemens.com/bilddb/cax\\_en.aspx?mlfb=3RA6912-1A](http://www.automation.siemens.com/bilddb/cax_en.aspx?mlfb=3RA6912-1A)



last change:

Oct 24, 2011