

PE PICK OFF,
CONNECTION MAIN CIRCUIT: SCREW TERMINAL,

General technical data:

Product brand name		SIRIUS
product designation		PE pick-up
Protection class IP		IP20
Degree of pollution		3
Installation altitude / at a height over sea level		
• maximum	m	2,000
Ambient temperature		
• during transport	°C	-55 ... 80
• during storage	°C	-55 ... 80
• during operating	°C	-20 ... 60
Item designation		
• according to DIN EN 61346-2		X
• according to DIN 40719 extendable after IEC 204-2 / according to IEC 750		X

Main circuit:

Operating current / at 400 V / for AC		
• rated value	A	63

Installation/mounting/dimensions:

Type of mounting		plug-in fixing
Width	mm	15
Height	mm	60
Depth	mm	32

Connections:

Design of the electrical connection		
• for main current circuit		screw-type terminals
Design of screw-type connection		
• for main contacts		M3
Wire stripping length / for main contacts	mm	10
Tightening torque / for main contacts		
• with screw-type terminals	N·m	2 ... 2.5

Conductor cross-section that can be connected / for main contacts / for motor outgoing line <ul style="list-style-type: none"> • unifilar • stranded wire • finely stranded <ul style="list-style-type: none"> • with conductor end processing • without conductor final cutting 	mm ² mm ² mm ² mm ²	1.5 ... 10 1.5 ... 10 1.5 ... 6 1.5 ... 6
Type of the connectable conductor cross-section / for main contacts / for motor outgoing line <ul style="list-style-type: none"> • solid • stranded • stranded wire <ul style="list-style-type: none"> • with conductor end processing 		2x (1.5 ... 6 mm ²), 1x (1.5 ... 10 mm ²) 2x (1.5 ... 6 mm ²), 1x (1.5 ... 10 mm ²) 2 x (1.5 ... 6) mm ²
Type of the connectable conductor cross-section / for AWG-conductors / for main contacts <ul style="list-style-type: none"> • for motor outgoing line 		2 x (16 ... 10), 1 x (16 ... 8)

General Product Approval



[ROSTEST](#)



Shipping Approval

other



[Manufacturer](#)

[other](#)

Safety:

Protection against electrical shock

finger-safe

Further information:

Information- and Downloadcenter (Catalogs, Brochures,...)

<http://www.siemens.com/industrial-controls/catalogs>

Industry Mall (Online ordering system)

<http://www.siemens.com/industrial-controls/mall>

CAX-Online-Generator

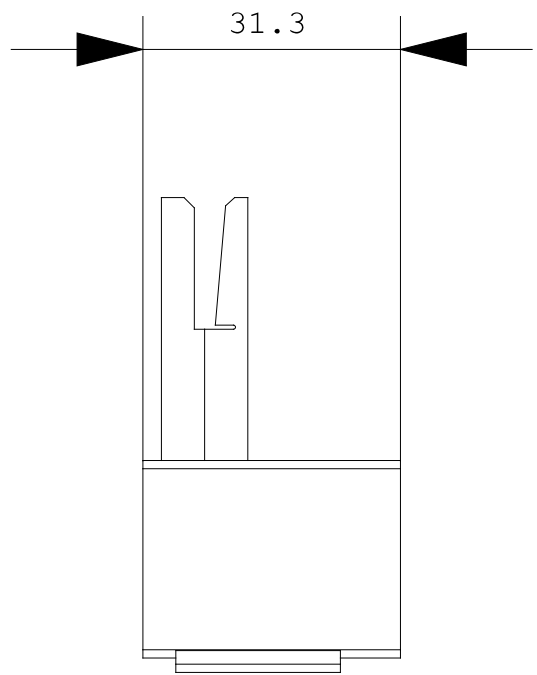
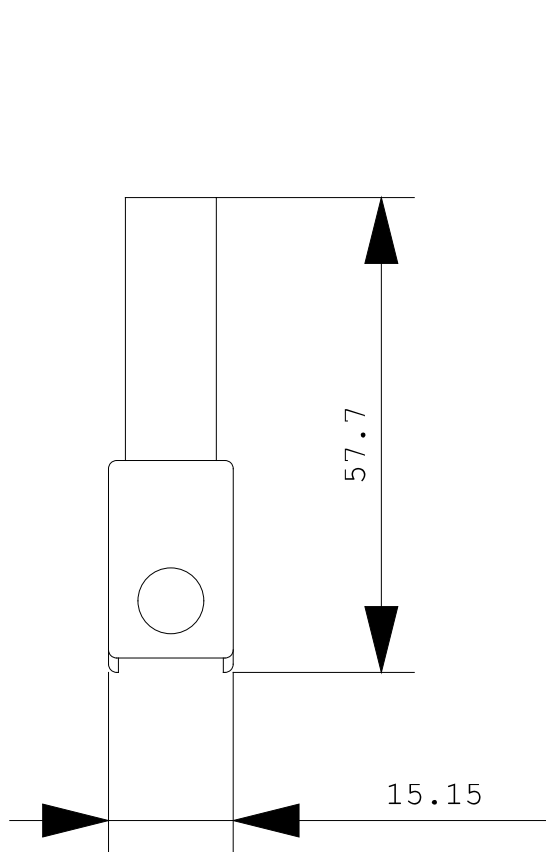
<http://www.siemens.com/cax>

Service&Support (Manuals, Certificates, Characteristics, FAQs,...)

<http://support.automation.siemens.com/VW/view/en/3RA6870-4AB/all>

Image database (product images, 2D dimension drawings, 3D models, device circuit diagrams, ...)

http://www.automation.siemens.com/bilddb/cax_en.aspx?mlfb=3RA6870-4AB



last change:

Oct 24, 2011