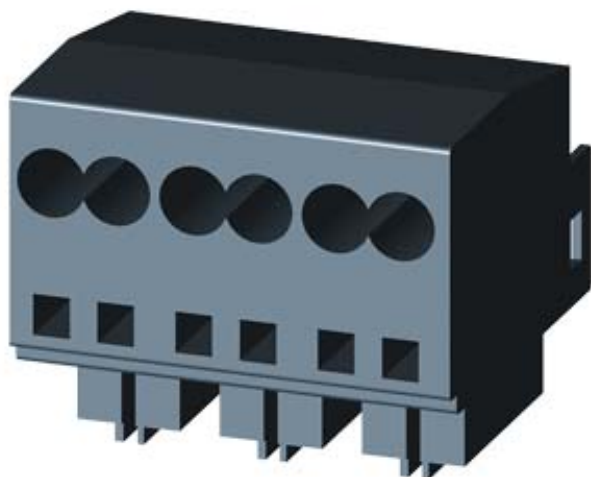


MAIN CIRCUIT TERMINALS(INT.AND CONNECTION OF
MAIN CIRCUIT: SPRING-LOADED TERMINAL,



General technical data:

Product brand name		SIRIUS
product designation		main circuit terminals (ingoing as well as outgoing)
Protection class IP		IP20
Relative humidity		
• during operating phase	%	10 ... 90
Ambient temperature		
• during transport	°C	-55 ... 80
• during storage	°C	-55 ... 80
• during operating	°C	-20 ... 60
Item designation		
• according to DIN EN 61346-2		X
• according to DIN 40719 extendable after IEC 204-2 / according to IEC 750		X

Installation/mounting/dimensions:

Width	mm	45
Height	mm	32
Depth	mm	30

Connections:

Wire stripping length	mm	10
Design of the electrical connection • for main current circuit		spring-loaded terminals
Type of the connectable conductor cross-section • for main contacts • solid • finely stranded / with conductor end processing • for AWG conductors / for main contacts		up to 12 A: 2x (1.5 ... 6 mm ²), up to 32 A: 2x (2.5 ... 6 mm ²) up to 12 A: 2x (1.5 ... 6 mm ²), up to 32 A: 2x (2.5 ... 6 mm ²) up to 12 A: 2x (16 ... 14), 2x (14 ... 10), 1x 8, up to 32 A: 2x (14 ... 10), 1x 8

Certificates/approvals:

Verification of suitability

IEC / EN 60947-6-2

General Product Approval



[ROSTEST](#)



Shipping Approval

other



[Manufacturer](#)

[other](#)

Further information:

Information- and Downloadcenter (Catalogs, Brochures,...)

<http://www.siemens.com/industrial-controls/catalogs>

Industry Mall (Online ordering system)

<http://www.siemens.com/industrial-controls/mall>

CAX-Online-Generator

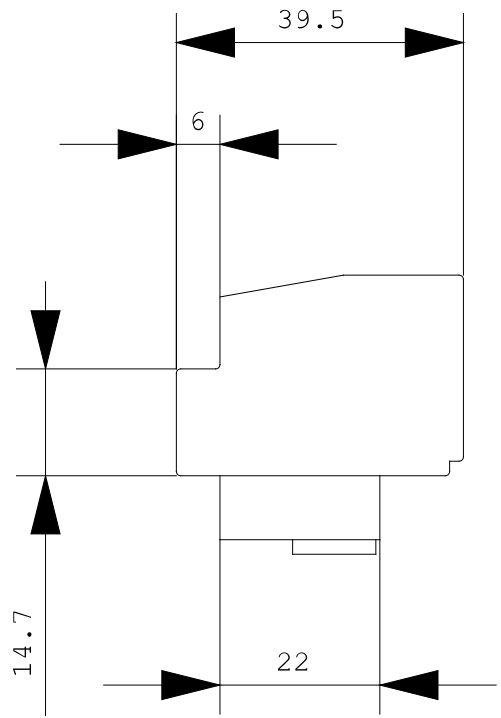
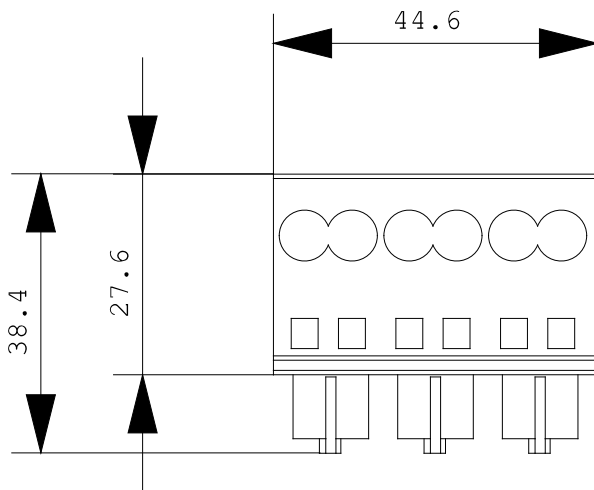
<http://www.siemens.com/cax>

Service&Support (Manuals, Certificates, Characteristics, FAQs,...)

<http://support.automation.siemens.com/WW/view/en/3RA6920-2A/all>

Image database (product images, 2D dimension drawings, 3D models, device circuit diagrams, ...)

http://www.automation.siemens.com/bilddb/cax_en.aspx?mlfb=3RA6920-2A



last change:

Oct 24, 2011