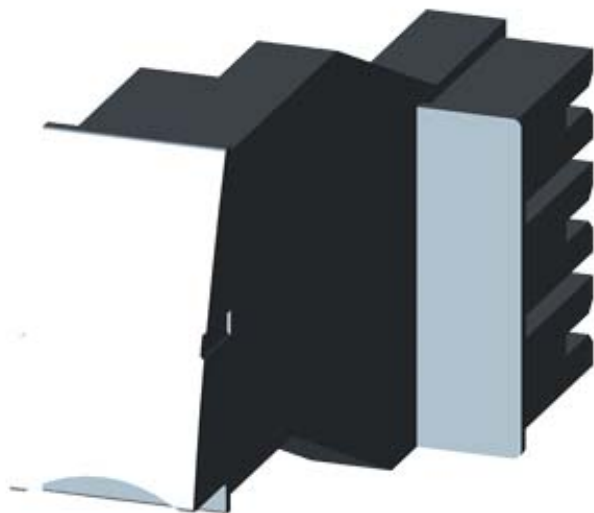


EXPANSION PLUG FOR INFEED SYSTEM 3RV19,
3RV29



General technical data:

Product brand name		SIRIUS
Protection class IP		IP20
Degree of pollution		3
Installation altitude / at a height over sea level		
• maximum	m	2,000
Ambient temperature		
• during transport	°C	-55 ... +80
• during storage	°C	-55 ... +80
• during operating	°C	-20 ... +60
Resistance against vibration		f = 4 to 5.8 Hz; d = 15 mm; f = 5.8 to 500 Hz; a = 2 m / s ² 10 cycles
Resistance against shock		Semi-sinusoidal a = 6 m/s ² at 10 ms; 3 pos. and 3 neg. Shock in all axes
Item designation		
• according to DIN EN 61346-2		X
• according to DIN 40719 extendable after IEC 204-2 / according to IEC 750		X

Main circuit:

Operating current / at 400 V / for AC		
• rated value	A	63

Installation/mounting/dimensions:

Type of mounting		plug-in fixing
Width	mm	40
Height	mm	55
Depth	mm	100

General Product Approval



[ROSTEST](#)



Shipping Approval

other



[Manufacturer](#)

[other](#)

Safety:

Protection against electrical shock	finger-safe
-------------------------------------	-------------

Further information:

Information- and Downloadcenter (Catalogs, Brochures,...)

<http://www.siemens.com/industrial-controls/catalogs>

Industry Mall (Online ordering system)

<http://www.siemens.com/industrial-controls/mall>

CAX-Online-Generator

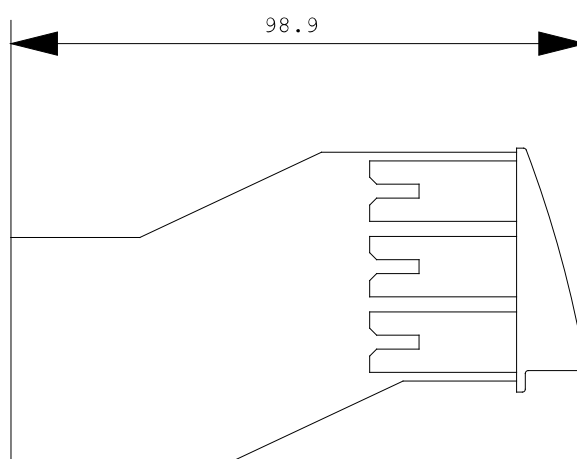
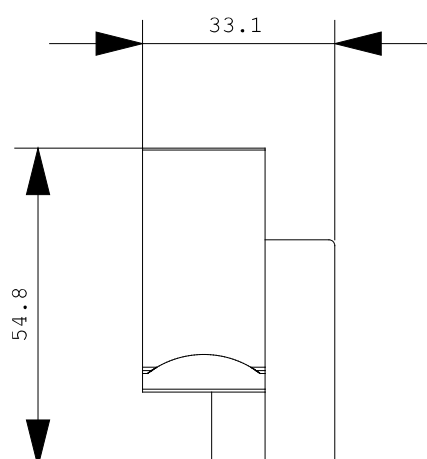
<http://www.siemens.com/cax>

Service&Support (Manuals, Certificates, Characteristics, FAQs,...)

<http://support.automation.siemens.com/WW/view/en/3RA6890-1AA/all>

Image database (product images, 2D dimension drawings, 3D models, device circuit diagrams, ...)

http://www.automation.siemens.com/bilddb/cax_en.aspx?mlfb=3RA6890-1AA



last change:

Nov 28, 2011