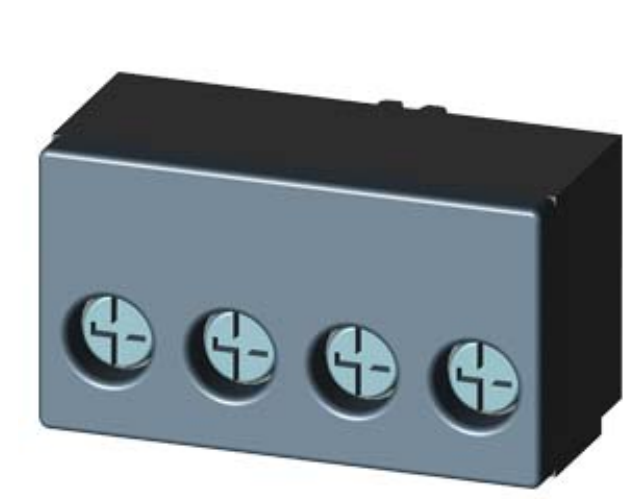


AUXILIARY SWITCH, 2 NO CONTACTS,
CONNECTION AUXILIARY CIRCUIT: SCREW TERMINAL,



General technical data:		
Product brand name		SIRIUS
product designation		auxiliary switch compact feeder
Protection class IP		IP20
Relative humidity		
• during operating phase	%	10 ... 90
Ambient temperature		
• during transport	°C	-55 ... 80
• during storage	°C	-55 ... 80
• during operating	°C	-20 ... 60
Item designation		
• according to DIN EN 61346-2		K
• according to DIN 40719 extendable after IEC 204-2 / according to IEC 750		K
Auxiliary circuit:		
Number of NC contacts		
• for auxiliary contacts		0
Number of NO contacts		
• for auxiliary contacts		2

Installation/mounting/dimensions:

Width	mm	45
Height	mm	32
Depth	mm	25

Connections:

Wire stripping length	mm	10
Design of the electrical connection <ul style="list-style-type: none"> • for auxiliary and control current circuit 		screw-type terminals
Design of screw-type connection <ul style="list-style-type: none"> • for auxiliary contacts 		M6
Tightening torque / for auxiliary contacts <ul style="list-style-type: none"> • with screw-type terminals 	N·m	0.8 ... 1.2
Type of the connectable conductor cross-section / for auxiliary contacts <ul style="list-style-type: none"> • solid • finely stranded • with conductor end processing 		max. 2x (1 ... 4 mm ²) 2x (0.5 ... 1.5 mm ²), 2x (0.75 ... 2.5 mm ²)
Type of the connectable conductor cross-section / for AWG conductors <ul style="list-style-type: none"> • for auxiliary contacts 		2x (20 ... 16), 2x (18 ... 14), 1x 12

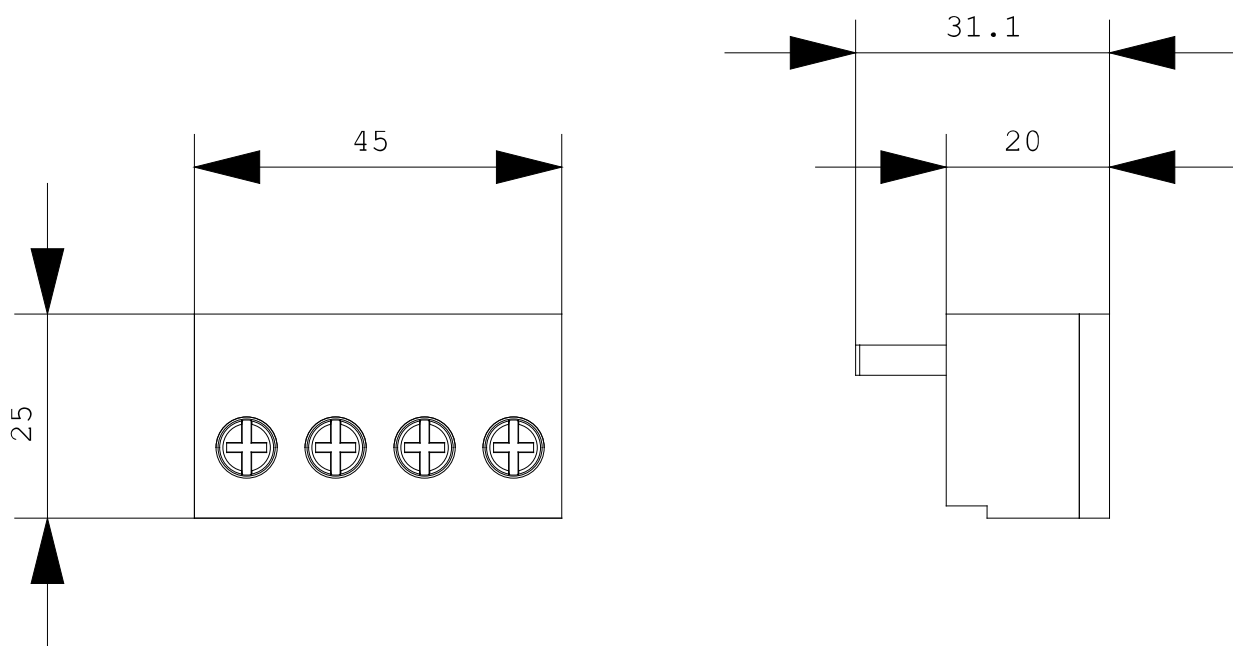
Certificates/approvals:

Verification of suitability	IEC / EN 60947-6-2
------------------------------------	--------------------

General Product Approval**Functional Safety / Safety of Machinery**

CSA

[ROSTEST](#)[other](#)**Shipping Approval****other**[Manufacturer](#)[other](#)**Further information:****Information- and Downloadcenter (Catalogs, Brochures,...)**<http://www.siemens.com/industrial-controls/catalogs>**Industry Mall (Online ordering system)**<http://www.siemens.com/industrial-controls/mall>**CAX-Online-Generator**<http://www.siemens.com/cax>**Service&Support (Manuals, Certificates, Characteristics, FAQs,...)**<http://support.automation.siemens.com/WW/view/en/3RA6911-1A/all>



last change:

Oct 24, 2011