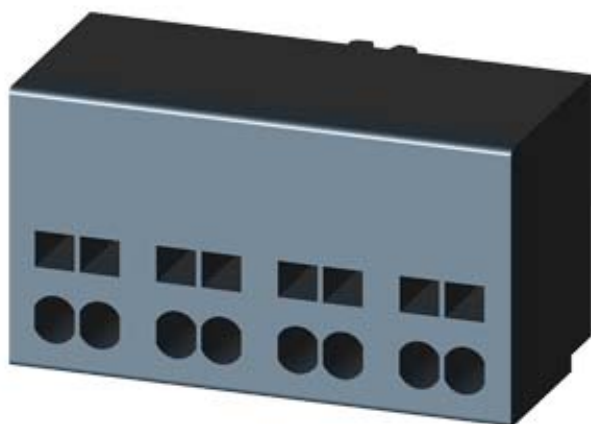


AUXILIARY SWITCH, 2 NO CONTACTS,
CONNECTION AUXILIARY CIRCUIT: SPRING-LOADED
TERMINAL,



General technical data:

Product brand name		SIRIUS
product designation		auxiliary switch compact feeder
Protection class IP		IP20
Relative humidity		
• during operating phase	%	10 ... 90
Ambient temperature		
• during transport	°C	-55 ... 80
• during storage	°C	-55 ... 80
• during operating	°C	-20 ... 60
Item designation		
• according to DIN EN 61346-2		K
• according to DIN 40719 extendable after IEC 204-2 / according to IEC 750		K

Auxiliary circuit:

Number of NC contacts		
• for auxiliary contacts		0
Number of NO contacts		
• for auxiliary contacts		2

Installation/mounting/dimensions:

Width	mm	45
Height	mm	32
Depth	mm	25

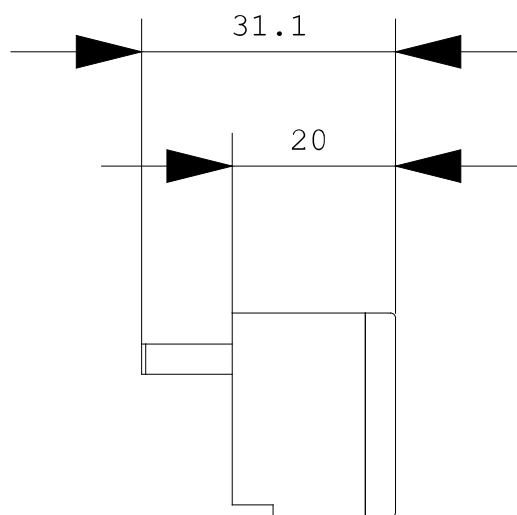
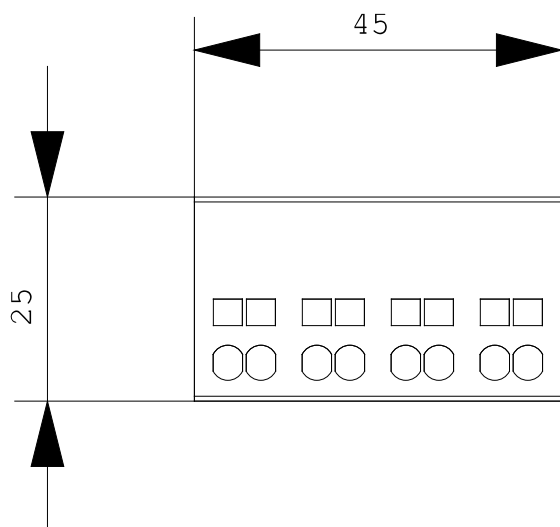
Connections:

Wire stripping length	mm	10
Design of the electrical connection <ul style="list-style-type: none"> • for auxiliary and control current circuit 		spring-loaded terminals
Type of the connectable conductor cross-section / for auxiliary contacts <ul style="list-style-type: none"> • solid • finely stranded <ul style="list-style-type: none"> • with conductor end processing • without conductor final cutting 		2x (0.25 ... 2.5 mm²) 2x (0.25 ... 1.5 mm²) 2x (0.25 ... 2.5 mm²)
Type of the connectable conductor cross-section / for AWG conductors <ul style="list-style-type: none"> • for auxiliary contacts 		2x (24 ... 14)

Certificates/approvals:

Verification of suitability	IEC / EN 60947-6-2
------------------------------------	--------------------

General Product Approval**Functional Safety / Safety of Machinery**[ROSTEST](#)[other](#)**Shipping Approval****other**[Manufacturer](#)[other](#)**Further information:****Information- and Downloadcenter (Catalogs, Brochures,...)**<http://www.siemens.com/industrial-controls/catalogs>**Industry Mall (Online ordering system)**<http://www.siemens.com/industrial-controls/mall>**CAX-Online-Generator**<http://www.siemens.com/cax>**Service&Support (Manuals, Certificates, Characteristics, FAQs,...)**<http://support.automation.siemens.com/WW/view/en/3RA6911-2A/all>**Image database (product images, 2D dimension drawings, 3D models, device circuit diagrams, ...)**http://www.automation.siemens.com/bilddb/cax_en.aspx?mlfb=3RA6911-2A



last change:

Oct 24, 2011