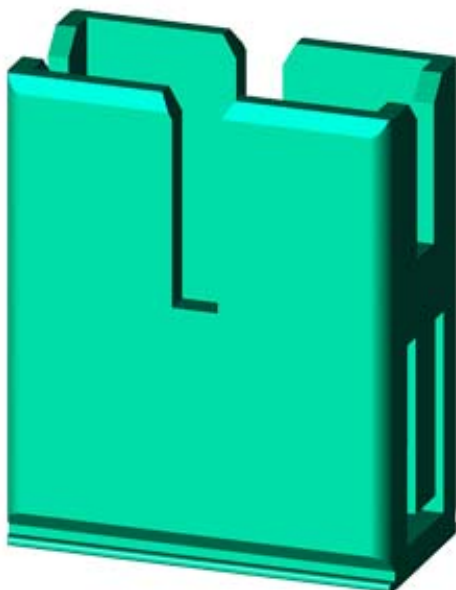


PE EXTENSION CONNECTOR,



General technical data:

| | | |
|--|----|-------------------|
| Product brand name | | SIRIUS |
| product designation | | PE extension plug |
| Protection class IP | | IP20 |
| Degree of pollution | | 3 |
| Installation altitude / at a height over sea level | | |
| • maximum | m | 2,000 |
| Ambient temperature | | |
| • during transport | °C | -55 ... 80 |
| • during storage | °C | -55 ... 80 |
| • during operating | °C | -20 ... 60 |
| Item designation | | |
| • according to DIN EN 61346-2 | | X |
| • according to DIN 40719 extendable after IEC 204-2 / according to IEC 750 | | X |

Main circuit:

| | | |
|--|---|----|
| Operating current / at 400 V / for AC | | |
| • rated value | A | 63 |

Installation/mounting/dimensions:

| | | |
|------------------|----|----------------|
| Type of mounting | | plug-in fixing |
| Width | mm | 20 |
| Height | mm | 25 |
| Depth | mm | 10 |

General Product Approval



[ROSTEST](#)



Shipping Approval

other



[Manufacturer](#)

[other](#)

Safety:

Protection against electrical shock

finger-safe

Further information:

Information- and Downloadcenter (Catalogs, Brochures,...)

<http://www.siemens.com/industrial-controls/catalogs>

Industry Mall (Online ordering system)

<http://www.siemens.com/industrial-controls/mall>

CAX-Online-Generator

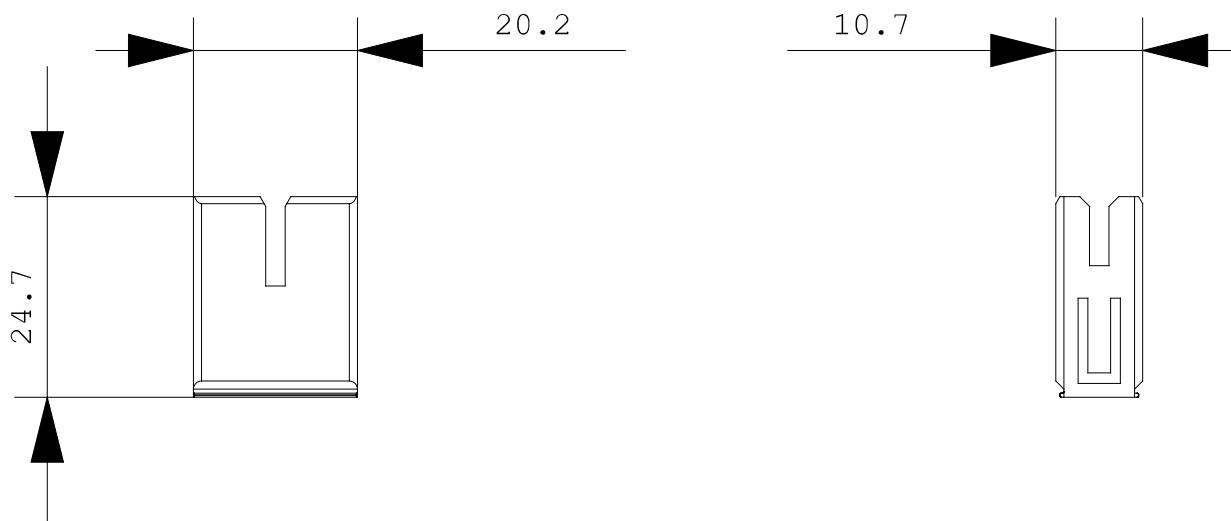
<http://www.siemens.com/cax>

Service&Support (Manuals, Certificates, Characteristics, FAQs,...)

<http://support.automation.siemens.com/WW/view/en/3RA6890-0EA/all>

Image database (product images, 2D dimension drawings, 3D models, device circuit diagrams, ...)

http://www.automation.siemens.com/bilddb/cax_en.aspx?mlfb=3RA6890-0EA



last change:

Oct 24, 2011