

STAR-DELTA (WYE-D.) COMBINATION
AC3:22/30KW/400V 24-33V AC/DC SIZE S2,
SCREW CONNECTION ELECTR. AND MECH. INTERLOCK
3NO+3NC INTEGR.,



General technical data:

product brand name		SIRIUS
Product function		wye-delta combination
Size of contactor		S2
Protection class IP / on the front		IP20
Degree of pollution		3
Insulation voltage / with degree of pollution 3 / Rated value	V	690
Installation altitude / at height above sea level / maximum	m	2,000
Ambient temperature / during storage	°C	-55 ... +80
Ambient temperature / during operation	°C	-25 ... +60
Surge voltage resistance / Rated value	kV	6
Active power loss / per conductor / typical	W	2.2
Manufacturer article number <ul style="list-style-type: none"> • of the supplied function module for wye-delta circuits • 1 / of the supplied contactor • 2 / of the supplied contactor • 3 / of the supplied contactor • of the supplied RS assembly kit 		3RA2816-0EW20 3RT2035-1NB30 3RT2035-1NB30 3RT2026-1NB30 3RA2934-2BB1
Mechanical service life (switching cycles) <ul style="list-style-type: none"> • of the contactor / typical 		10,000,000

- of the contactor with added auxiliary switch block / typical

10,000,000

Communication/ Protocol:

Product function

- Bus communication
- Control circuit interface with IO link

No

No

Protocol / is supported / AS-interface protocol

No

Main circuit:

Number of poles / for main current circuit

3

Number of NC contacts / for main contacts

0

Number of NO contacts / for main contacts

3

Operating voltage / at AC-3 / Rated value / maximum

V

690

Operating current

- at AC-1 / at 400 V
 - at ambient temperature 40 °C / Rated value
 - at ambient temperature 60 °C / Rated value
- at AC-2 / at 400 V / Rated value
- at AC-3 / at 400 V / Rated value

A

60

A

55

A

50

A

50

Operating power

- at AC-2 / at 400 V / Rated value
- at AC-3
 - at 400 V / Rated value
- at AC-4 / at 400 V / Rated value

kW

22

kW

30

kW

38

No-load switching frequency

1/h

1,500

Operating frequency

- at AC-1 / maximum
- at AC-2 / maximum
- at AC-3 / maximum
- at AC-4 / maximum

1/h

1,000

1/h

750

1/h

1,000

1/h

300

Control circuit/ Control:

Type of voltage / of the control supply voltage

AC/DC

Control supply voltage / 1

- for DC
- with AC
 - at 50 Hz
- with AC
 - at 60 Hz

V

20 ... 33

V

20 ... 33

V

20 ... 33

Operating range factor control supply voltage rated value / of the magnet coil

• with AC / at 50 Hz		0.8 ... 1.1
• with AC / at 60 Hz		0.8 ... 1.1
• for DC		0.8 ... 1.1
Apparent pick-up power / of the magnet coil / with AC		
• at 50 Hz	V·A	40
• at 60 Hz	V·A	40
Inductive power factor / with closing power of the coil		
• at 50 Hz		0.64
• at 60 Hz		0.5
Apparent holding power / of the magnet coil / with AC		
• at 50 Hz	V·A	2
• at 60 Hz	V·A	2
Inductive power factor / with the holding power of the coil		
• at 50 Hz		0.36
• at 60 Hz		0.39
Closing power / of the magnet coil / for DC	W	23
Holding power / of the magnet coil / for DC	W	1

Auxiliary circuit:		
Product expansion / Auxiliary switch		No
Contact reliability / of the auxiliary contacts		< 1 error per 100 million operating cycles
Number of NC contacts / for auxiliary contacts		
• instantaneous contact		3
• lagging switching		0
Number of NO contacts / for auxiliary contacts		
• instantaneous contact		3
• leading contact		0
Operating current / of the auxiliary contacts		
• at AC-12 / maximum	A	10
• at AC-15		
• at 230 V	A	6
• at 400 V	A	3
• at DC-12		
• at 48 V	A	6
• at 60 V	A	6
• at 110 V	A	3
• at 220 V	A	1
• at DC-13		
• at 24 V	A	10
• at 48 V	A	2

- at 60 V
- at 110 V
- at 220 V

A	2
A	1
A	0.3

Short-circuit:

Design of the fuse link

- for short-circuit protection of the main circuit
 - with type of assignment 1 / required
- for short-circuit protection of the auxiliary switch / required

gL/gG NH 3NA, DIAZED 5SB, NEOZED 5SE: 160 A
fuse gL/gG: 10 A

Installation/ mounting/ dimensions:

mounting position

+/-180° rotation possible on vertical mounting surface;
can be tilted forward and backward by +/- 22.5° on
vertical mounting surface

Mounting type

screw fixing

Width

mm 177.5

Height

mm 142

Depth

mm 223

Connections/ terminals:

Design of the electrical connection

- for main current circuit
- for auxiliary and control current circuit

screw-type terminals

screw-type terminals

Type of connectable conductor cross-section

- for main contacts
 - single or multi-stranded
 - finely stranded / with core end processing
- for AWG conductors / for main contacts

2x (1 ... 35 mm²), 1x (1 ... 50 mm²)

2x (1 ... 25 mm²), 1x (1 ... 35 mm²)

2x (18 ... 2), 1x (18 ... 1)

Type of connectable conductor cross-section

- for auxiliary contacts
 - single or multi-stranded
 - finely stranded / with core end processing
- for AWG conductors / for auxiliary contacts

2x (0,5 ... 1,5 mm²), 2x (0,75 ... 2,5 mm²)

2x (0,5 ... 1,5 mm²), 2x (0,75 ... 2,5 mm²)

2x (20 ... 16), 2x (18 ... 14)

Certificates/ approvals:

Declaration of Conformity



UL/CSA ratings:

Contact rating / of the auxiliary contacts / acc. to UL

A600 / Q600

Safety related data:

B10 value / with high demand rate

- acc. to SN 31920

1,000,000

Failure rate [FIT] / with low demand rate

- acc. to SN 31920

FIT

100

Proportion of dangerous failures

- with low demand rate / acc. to SN 31920
- with high demand rate / acc. to SN 31920

%

40

%

73

T1 value / for proof test interval or service life

- acc. to IEC 61508

a

20

Further information:

Information- and Downloadcenter (Catalogs, Brochures,...)

<http://www.siemens.com/industrial-controls/catalogs>

Industry Mall (Online ordering system)

<http://www.siemens.com/industrymall>

Cax online generator

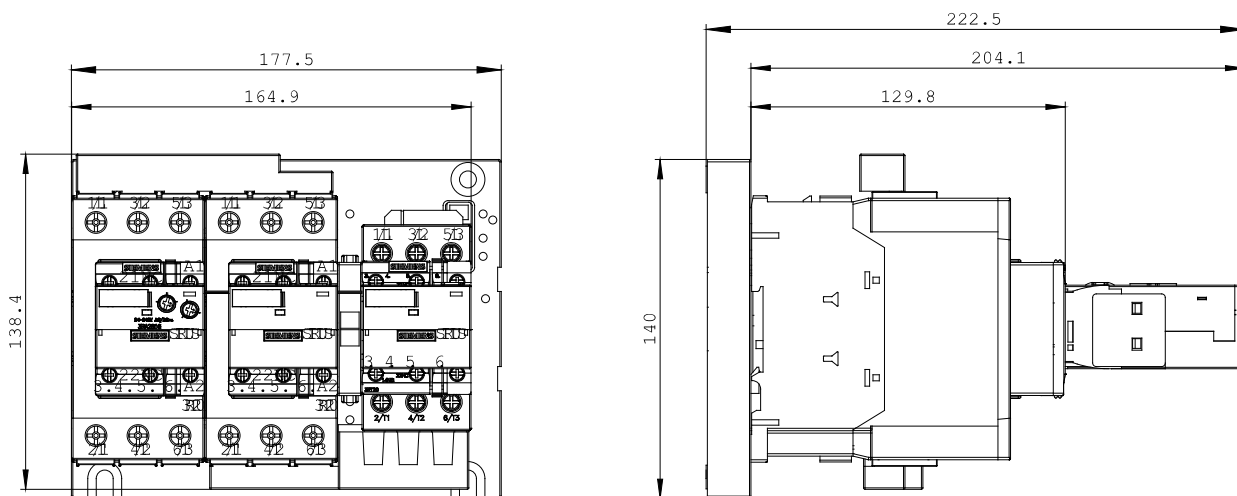
<http://www.siemens.com/cax>

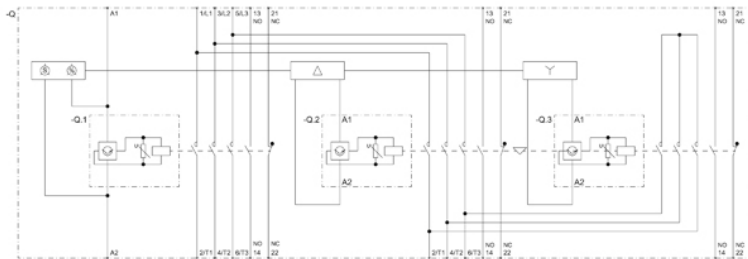
Service&Support (Manuals, Certificates, Characteristics, FAQs,...)

<http://support.automation.siemens.com/WW/view/en/3RA2434-8XF32-1NB3/all>

Image database (product images, 2D dimension drawings, 3D models, device circuit diagrams, ...)

http://www.automation.siemens.com/bilddb/cax_en.aspx?mlfb=3RA2434-8XF32-1NB3





last change:

Dec 17, 2014