



OVERLOAD RELAY 36...45 A FOR MOTOR PROTECTION
SIZE S2,
CLASS 10 FOR MOUNTING ONTO CONTACTORS MAIN
CIRCUIT: SCREW TERMINAL AUX. CIRCUIT: SCREW
TERMINAL MANUAL-AUTOMATIC-RESET.

General technical data:		
product brand name		SIRIUS
Product designation		3RU2 thermal overload relay
Size of overload relay		S2
Size of contactor / can be combined / company-specific		S2
Number of poles / for main current circuit		3
Product function / removable terminal for auxiliary and control circuit		No
Product function		
• overload protection		Yes
• Phase failure detection		Yes
• Ground fault detection		No
Product component		
• Auxiliary switch		Yes
• Trip indicator		Yes
Insulation voltage / with degree of pollution 3 / Rated value	V	690
Surge voltage resistance / Rated value	kV	6
Protection class IP		
• of the terminal		IP00
• on the front		IP20

Installation altitude / at height above sea level / maximum	m	2,000
Shock resistance / acc. to IEC 60068-2-27		8g / 11 ms
Ambient temperature		
• during transport	°C	-55 ... +80
• during storage	°C	-55 ... +80
• during operation	°C	-40 ... +70
Relative humidity		
• during operation	%	0 ... 90
Type of protection		on request
Active power loss / total / typical	W	11

Main circuit:		
Operating current / Rated value	A	45
Operating voltage / Rated value	V	690
Type of voltage / for main current circuit		AC/DC
Operating frequency		
• Rated value	Hz	50 ... 60
Operating current / at AC-3 / at 400 V / Rated value	A	45
Type of assignment		2

Steuerstromkreis		
Type of voltage / for auxiliary and control current circuit		AC/DC

Auxiliary circuit:		
Design of the auxiliary switch		integrated
Number of NC contacts / for auxiliary contacts		1
Number of NO contacts / for auxiliary contacts		1
Number of CO contacts / for auxiliary contacts		0
Design of the fuse link / for short-circuit protection of the auxiliary switch / required		fuse gG: 6 A, quick: 10 A
Operating current / of the auxiliary contacts		
• at AC-15		
• at 24 V	A	3
• at 110 V	A	3
• at 120 V	A	3
• at 125 V	A	3
• at 230 V	A	2
• at 400 V	A	1
• at DC-13		
• at 24 V	A	2
• at 110 V	A	0.22

- at 125 V
- at 220 V

A	0.22
A	0.11

Protective and monitoring functions:

Design of the overload circuit breaker

thermal

Trip class

CLASS 10

Adjustable response value current

- of the current-dependent overload release

A 36 ... 45

Installation/ mounting/ dimensions:

Mounting type

direct mounting

mounting position

any

Depth

mm 105

Height

mm 90

Width

mm 55

Connections/ terminals:

Arrangement of electrical connectors / for main current circuit

Top and bottom

Design of the electrical connection

- for main current circuit
- for auxiliary and control current circuit

screw-type terminals

screw-type terminals

Type of connectable conductor cross-section / for main contacts

- single or multi-stranded
- finely stranded
- with core end processing

2x (1 ... 35 mm²), 1x (1 ... 50 mm²)

2x (1 ... 25 mm²), 1x (1 ... 35 mm²)

Type of connectable conductor cross-section / for AWG conductors / for main contacts

2x (18 ... 2), 1x (18 ... 1)

Type of connectable conductor cross-section / for auxiliary contacts

- single or multi-stranded
- finely stranded
- with core end processing

2x (0,5 ... 1,5 mm²), 2x (0,75 ... 2,5 mm²)

2x (0.5 ... 1.5 mm²), 2x (0.75 ... 2.5 mm²)

Type of connectable conductor cross-section / for AWG conductors / for auxiliary contacts

2x (20 ... 16), 2x (18 ... 14)

UL/CSA ratings:

Full-load current (FLA) / for three-phase AC motor

- at 480 V / Rated value
- at 600 V / Rated value

A 45
A 45

Contact rating / of the auxiliary contacts / acc. to UL

B600 / R300

Certificates/ approvals:

General Product Approval



Test Certificates

[Type Test
Certificates/Test
Report](#)

Further information:

Information- and Downloadcenter (Catalogs, Brochures,...)

<http://www.siemens.com/industrial-controls/catalogs>

Industry Mall (Online ordering system)

<http://www.siemens.com/industrymall>

Cax online generator

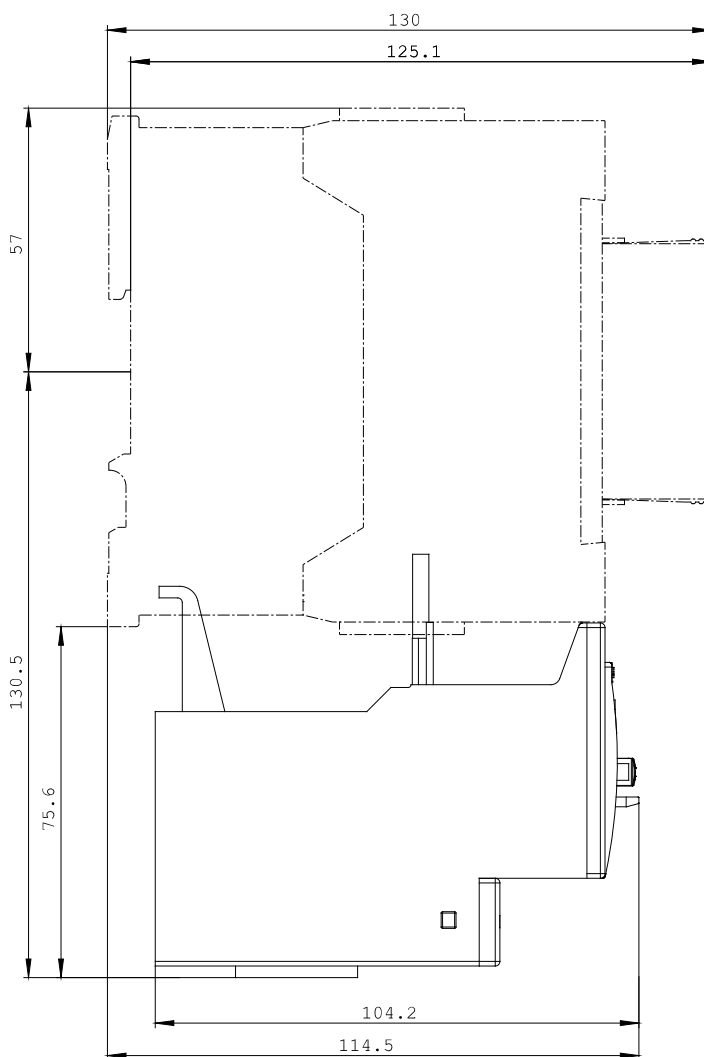
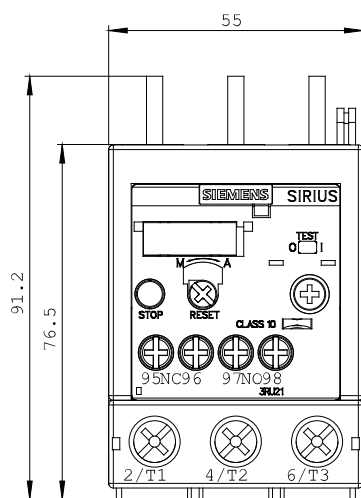
<http://www.siemens.com/cax>

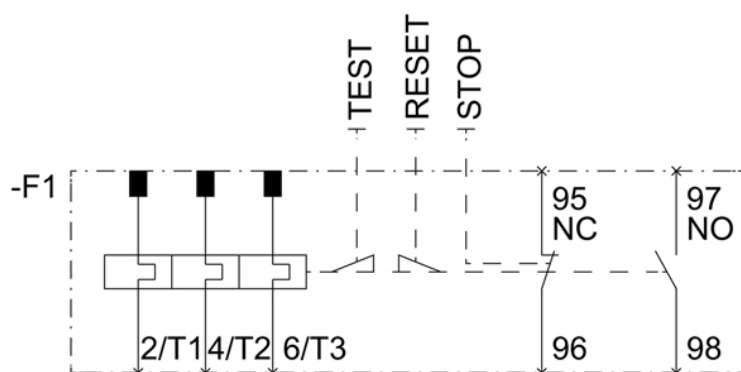
Service&Support (Manuals, Certificates, Characteristics, FAQs,...)

<http://support.automation.siemens.com/WW/view/en/3RU2136-4GB0/all>

Image database (product images, 2D dimension drawings, 3D models, device circuit diagrams, ...)

http://www.automation.siemens.com/bilddb/cax_en.aspx?mlfb=3RU2136-4GB0





last change:

Dec 3, 2014