



OVERLOAD RELAY 22...32 A FOR MOTOR PROTECTION
SIZE S2,
CLASS 10 FOR MOUNTING ONTO CONTACTORS MAIN
CIRCUIT: SCREW TERMINAL AUX. CIRCUIT: SPRING-T.
TERM. MANUAL-AUTOMATIC-RESET.

| General technical data: | | |
|---|----|-----------------------------|
| product brand name | | SIRIUS |
| Product designation | | 3RU2 thermal overload relay |
| Size of overload relay | | S2 |
| Size of contactor / can be combined / company-specific | | S2 |
| Number of poles / for main current circuit | | 3 |
| Product function / removable terminal for auxiliary and control circuit | | No |
| Product function | | |
| • overload protection | | Yes |
| • Phase failure detection | | Yes |
| • Ground fault detection | | No |
| Product component | | |
| • Auxiliary switch | | Yes |
| • Trip indicator | | Yes |
| Insulation voltage / with degree of pollution 3 / Rated value | V | 690 |
| Surge voltage resistance / Rated value | kV | 6 |
| Protection class IP | | |
| • of the terminal | | IP00 |
| • on the front | | IP20 |

| | | |
|--|----|-------------|
| Installation altitude / at height above sea level / maximum | m | 2,000 |
| Shock resistance / acc. to IEC 60068-2-27 | | 8g / 11 ms |
| Ambient temperature | | |
| • during transport | °C | -55 ... +80 |
| • during storage | °C | -55 ... +80 |
| • during operation | °C | -40 ... +70 |
| Relative humidity | | |
| • during operation | % | 0 ... 90 |
| Type of protection | | on request |
| Active power loss / total / typical | W | 11 |

| | | |
|---|----|-----------|
| Main circuit: | | |
| Operating current / Rated value | A | 32 |
| Operating voltage / Rated value | V | 690 |
| Type of voltage / for main current circuit | | AC/DC |
| Operating frequency | | |
| • Rated value | Hz | 50 ... 60 |
| Operating current / at AC-3 / at 400 V / Rated value | A | 32 |
| Type of assignment | | 2 |

| | | |
|--|--|-------|
| Steuerstromkreis | | |
| Type of voltage / for auxiliary and control current circuit | | AC/DC |

| | | |
|--|---|---------------------------|
| Auxiliary circuit: | | |
| Design of the auxiliary switch | | integrated |
| Number of NC contacts / for auxiliary contacts | | 1 |
| Number of NO contacts / for auxiliary contacts | | 1 |
| Number of CO contacts / for auxiliary contacts | | 0 |
| Design of the fuse link / for short-circuit protection of the auxiliary switch / required | | fuse gG: 6 A, quick: 10 A |
| Operating current / of the auxiliary contacts | | |
| • at AC-15 | | |
| • at 24 V | A | 3 |
| • at 110 V | A | 3 |
| • at 120 V | A | 3 |
| • at 125 V | A | 3 |
| • at 230 V | A | 2 |
| • at 400 V | A | 1 |
| • at DC-13 | | |
| • at 24 V | A | 2 |
| • at 110 V | A | 0.22 |

- at 125 V
- at 220 V

| | |
|---|------|
| A | 0.22 |
| A | 0.11 |

Protective and monitoring functions:

Design of the overload circuit breaker

thermal

Trip class

CLASS 10

Adjustable response value current

- of the current-dependent overload release

A 22 ... 32

Installation/ mounting/ dimensions:

Mounting type

direct mounting

mounting position

any

Depth

mm 105

Height

mm 90

Width

mm 55

Connections/ terminals:

Arrangement of electrical connectors / for main current circuit

Top and bottom

Design of the electrical connection

- for main current circuit
- for auxiliary and control current circuit

screw-type terminals
spring-loaded terminals

Type of connectable conductor cross-section / for main contacts

- single or multi-stranded
- finely stranded
- with core end processing

2x (1 ... 35 mm²), 1x (1 ... 50 mm²)
2x (1 ... 25 mm²), 1x (1 ... 35 mm²)

Type of connectable conductor cross-section / for AWG conductors / for main contacts

2x (18 ... 2), 1x (18 ... 1)

Type of connectable conductor cross-section / for auxiliary contacts

- single or multi-stranded
- finely stranded
- without core end processing
- with core end processing

2x (0,5 ... 2,5 mm²)
2x (0.5 ... 2.5 mm²)
2x (0.5 ... 1.5 mm²)

Type of connectable conductor cross-section / for AWG conductors / for auxiliary contacts

2x (20 ... 14)

UL/CSA ratings:

Full-load current (FLA) / for three-phase AC motor

- at 480 V / Rated value
- at 600 V / Rated value

A 32
A 32

Contact rating / of the auxiliary contacts / acc. to UL

B600 / R300

Certificates/ approvals:

General Product Approval



Test Certificates

[Type Test](#)
[Certificates/Test](#)
[Report](#)

Further information:

Information- and Downloadcenter (Catalogs, Brochures,...)

<http://www.siemens.com/industrial-controls/catalogs>

Industry Mall (Online ordering system)

<http://www.siemens.com/industrymall>

Cax online generator

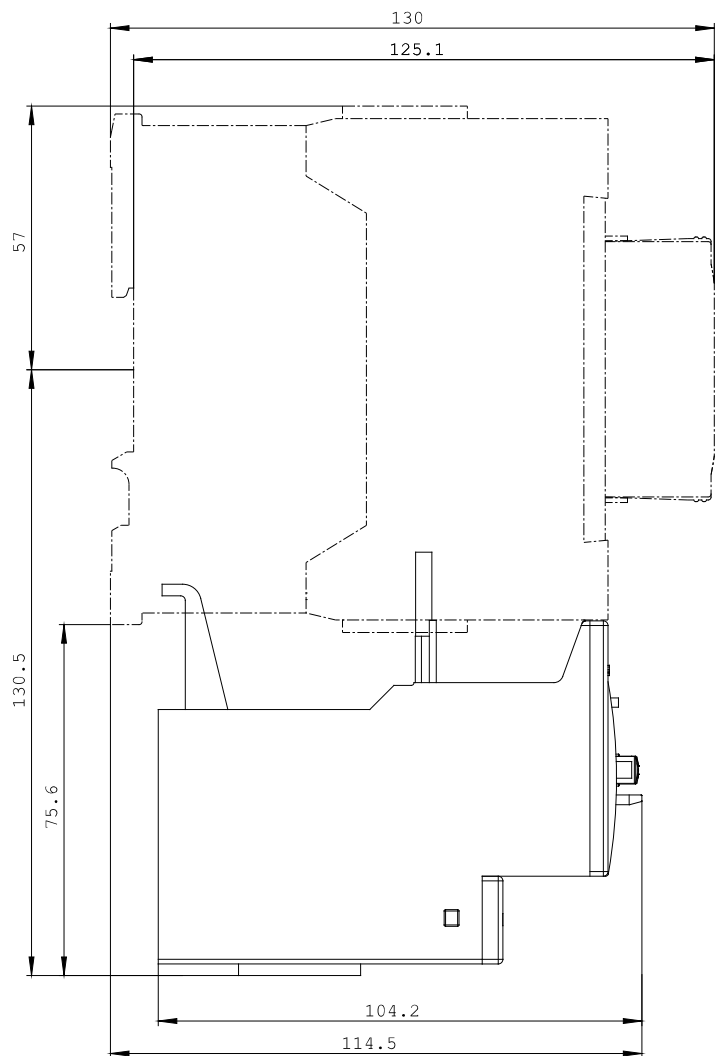
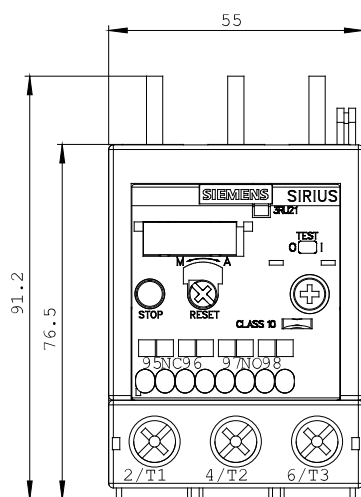
<http://www.siemens.com/cax>

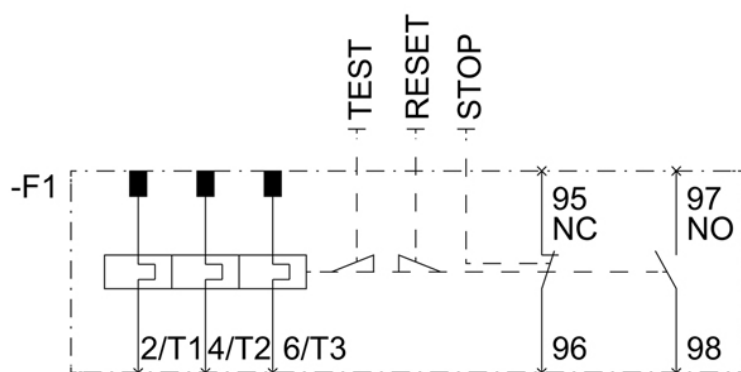
Service&Support (Manuals, Certificates, Characteristics, FAQs,...)

<http://support.automation.siemens.com/WW/view/en/3RU2136-4ED0/all>

Image database (product images, 2D dimension drawings, 3D models, device circuit diagrams, ...)

http://www.automation.siemens.com/bilddb/cax_en.aspx?mlfb=3RU2136-4ED0





last change:

Dec 3, 2014