



LOAD FEEDER FUSELESS REVERSING DUTY,
AC 400V, SZ S00, 0.9...1.25A,
DC 24V SPRING-LOADED CONNECTION FOR RAIL-
MOUNTING,
TYPE OF COORDINATION 2,
IQ = 150KA (ALSO FULFILLS TYPE OF COORDINATION 1)
1NC (CONTACTOR)

General technical data:

| | | |
|--|----|-----------------------------|
| Product brand name | | SIRIUS |
| product designation | | non-fused load feeders 3RA2 |
| Design of the product | | reversing starter |
| Size of the load feeder | | S00 |
| Protection class IP / on the front | | IP20 |
| Degree of pollution | | 3 |
| Insulation voltage / rated value | V | 690 |
| Installation altitude / at a height over sea level / maximum | m | 2,000 |
| Ambient temperature | | |
| • during transport | °C | -55 ... 80 |
| • during storage | °C | -55 ... 80 |
| • during operating | °C | -20 ... 60 |
| Impulse voltage resistance / rated value | kV | 6 |
| Active power loss / per conductor / typical | W | 2 |
| Item designation | | |
| • according to DIN 40719 extendable after IEC 204-2 / according to IEC 750 | | Q |
| • according to DIN EN 61346-2 | | Q |
| Type of assignment | | 2 |

| | | |
|---|---|---|
| Mechanical operating cycles as operating time / of the contactor • typical | | 10,000,000 |
| Manufacturer article number • of the circuit-breakers included in the scope of supply • of the contactor included in the scope of supply • of the link module included in the scope of supply | | 3RV2011-0KA20 3RT2015-2BB42 3RA2911-2AA00 |
| Design of the switching contact | | mechanical |
| Type of the motor protection | | bimetal |
| Adjustable response current • of the current-dependent overload release | A | 0.9 ... 1.25 |

| | | |
|---|--|----------------|
| Communication: | | |
| Product function / bus-communication | | No |
| Protocol / will be supported • AS interface protocol • PROFIBUS DP protocol • PROFINET protocol | | No No No |
| Product extension / function module for communication | | No |

| | | |
|---|---------------------------|-------------------------------------|
| Main circuit: | | |
| Number of poles / for main current circuit | | 3 |
| Number of NC contacts / for main contacts | | 0 |
| Number of NO contacts / for main contacts | | 3 |
| Operating voltage / at AC-3 / rated value / maximum | V | 690 |
| Operating current • at AC-1 / at 400 V / rated value • at AC-2 / at 400 V / rated value • at AC-3 / at 400 V / rated value • at AC-4 / at 400 V / rated value | A A A A | 1.25 1.1 1.1 1.1 |
| Service power • at AC-2 / at 400 V / rated value • at AC-3 • at 400 V / rated value • at 500 V / rated value • at 690 V / rated value • at AC-4 / at 400 V / rated value | W W W W W | 370 370 550 750 370 |
| Off-load operating frequency | 1/h | 10,000 |
| Frequency of operation • at AC-1 / according to IEC 60947-6-2 / maximum • at AC-2 / according to IEC 60947-6-2 / maximum | 1/h 1/h | 1,000 750 |

- at AC-3 / according to IEC 60947-6-2 / maximum
- at AC-4 / according to IEC 60947-6-2 / maximum

| | |
|-----|-----|
| 1/h | 750 |
| 1/h | 250 |

Control circuit:

| | | |
|--|----|----|
| Type of voltage / of the controlled supply voltage | | DC |
| Control supply voltage frequency | | |
| • 1 / rated value | Hz | 0 |
| Control supply voltage / 1 | | |
| • for DC / rated value | V | 24 |
| Holding power / of the solenoid / for DC | W | 4 |

Auxiliary circuit:

| | | |
|---|--|-----|
| Product extension / auxiliary switch | | Yes |
| Number of NC contacts / for auxiliary contacts | | 1 |
| Number of NO contacts / for auxiliary contacts | | 0 |
| Number of change-over switches / for auxiliary contacts | | 0 |

Inputs/ Outputs:

| | | |
|--------------------------|--|---|
| Number of digital inputs | | 0 |
|--------------------------|--|---|

Short-circuit:

| | | |
|---|---|------------------|
| Product function / short circuit protection | | Yes |
| Design of the short-circuit protection | | circuit-breakers |
| Breaking capacity limit short-circuit current (Icu) | | |
| • at 400 V / rated value | A | 100,000 |
| • at 500 V / rated value | A | 100,000 |
| • at 690 V / rated value | A | 100,000 |

Installation/mounting/dimensions:

| | | |
|---|----|--|
| Built in orientation | | vertical |
| Type of mounting | | screw and snap-on mounting onto 35 mm standard mounting rail |
| Width | mm | 90 |
| Height | mm | 204 |
| Depth | mm | 97.1 |
| Distance, to be maintained, to the ranks assembly | | |
| • forwards | mm | 0 |
| • backwards | mm | 0 |
| • upwards | mm | 20 |
| • downwards | mm | 30 |
| • sideways | mm | 0 |
| Distance, to be maintained, to earthed part | | |

| | | |
|--|----|----|
| • forwards | mm | 0 |
| • backwards | mm | 0 |
| • upwards | mm | 20 |
| • downwards | mm | 10 |
| • sideways | mm | 9 |
| Distance, to be maintained, conductive elements | | |
| • forwards | mm | 0 |
| • backwards | mm | 0 |
| • upwards | mm | 20 |
| • downwards | mm | 10 |
| • sideways | mm | 9 |

Connections:

Design of the electrical connection

- for main current circuit
- for auxiliary and control current circuit

spring-loaded terminals
spring-loaded terminals

Type of the connectable conductor cross-section

- for main contacts
 - solid
 - stranded
 - finely stranded
 - with conductor end processing
 - without conductor final cutting
- for AWG conductors / for main contacts
- for auxiliary contacts
 - solid
 - finely stranded
 - with conductor end processing
 - without conductor final cutting
- for AWG conductors / for auxiliary contacts

2x (0.5 ... 4 mm²)
2x (0.5 ... 4 mm²)

2x (0.5 ... 2.5 mm²)
2x (0.5 ... 2.5 mm²)
2x (20 ... 12)

2x (0.5 ... 4 mm²)

2x (0.5 ... 2.5 mm²)
2x (0.5 ... 2.5 mm²)
2x (20 ... 12)

Certificates/approvals:

Verification of suitability

CE / UL / CSA / CCC

Verification of suitability / ATEX

No

| | | |
|---------------------------------|---------------------------------------|--------------------------|
| General Product Approval | For use in hazardous locations | Test Certificates |
|---------------------------------|---------------------------------------|--------------------------|

[ROSTEST](#)



[DEKRA EXAM, DMT](#)

[Manufacturer](#)

Shipping Approval

other



ABS



PRS



RINA

[Manufacturer](#)

[other](#)

UL/CSA ratings

yielded mechanical performance (hp)

- for three-phase squirrel cage motors
 - at 460/480 V / rated value
 - at 575/600 V / rated value

hp

0.5

hp

0.5

Operating current (FLA) / for three-phase squirrel cage motors

- at 480 V / rated value
- at 600 V / rated value

A

1.25

A

1.25

Contact rating designation / for auxiliary contacts / according to UL

A600 / Q600

Safety:

B10 value / with high demand rate

- according to SN 31920

1,000,000

Failure rate (FIT value) / with low demand rate

- according to SN 31920

FIT

250

Proportion of dangerous failures

- with low demand rate / according to SN 31920
- with high demand rate / according to SN 31920

%

40

%

75

T1 value / for proof test interval or service life

- according to IEC 61508

a

10

Protection against electrical shock

finger-safe

Further information:

Information- and Downloadcenter (Catalogs, Brochures,...)

<http://www.siemens.com/industrial-controls/catalogs>

Industry Mall (Online ordering system)

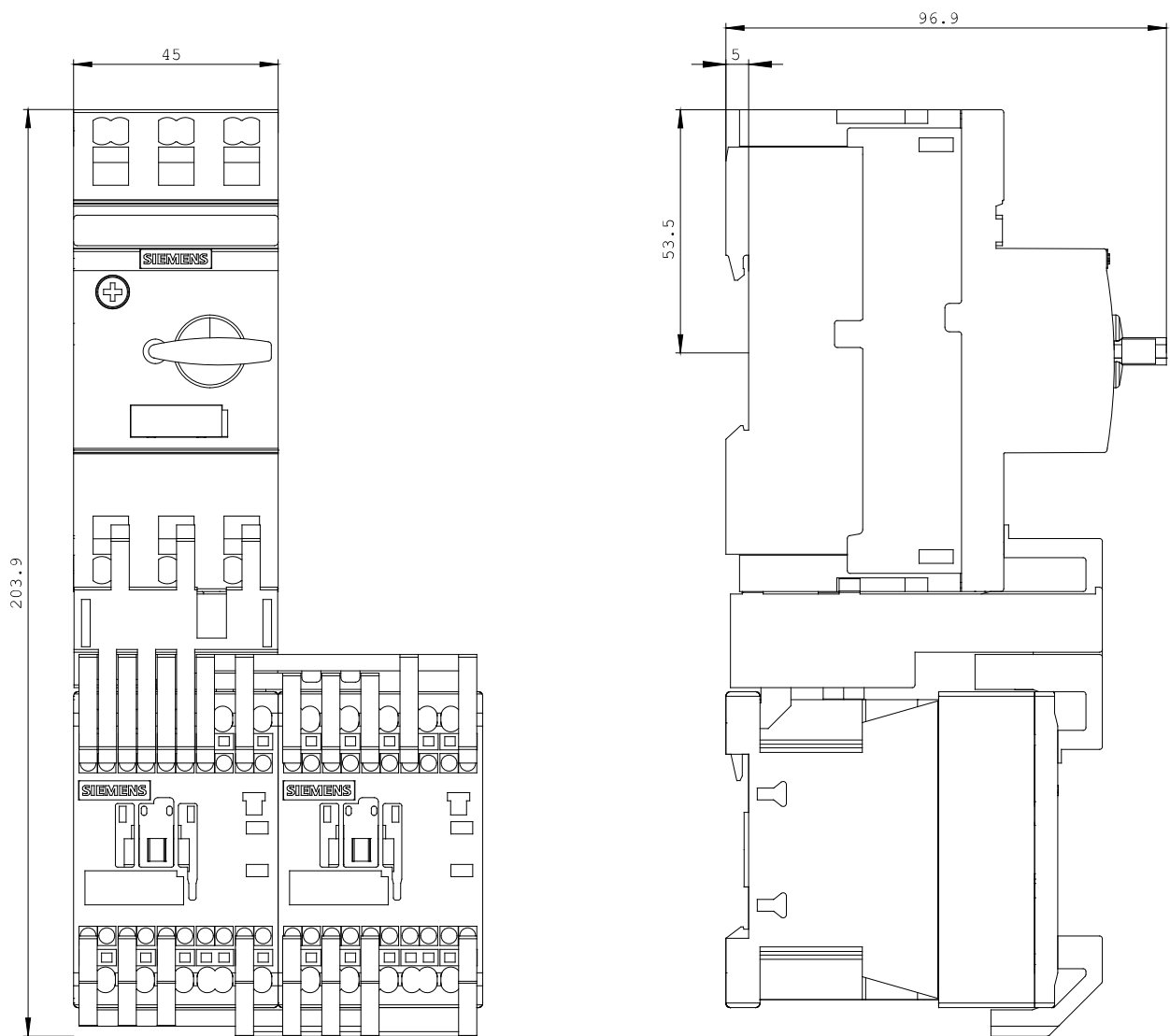
<http://www.siemens.com/industrial-controls/mall>

CAX-Online-Generator

<http://www.siemens.com/cax>

Service&Support (Manuals, Certificates, Characteristics, FAQs,...)

<http://support.automation.siemens.com/WW/view/en/3RA2210-0KE15-2BB4/all>





last change:

Oct 24, 2011