

LOAD FEEDER FUSELESS REVERSING DUTY,
AC 400V, SZ. S0, 9. . .12.5A,
DC 24V SCREW CONNECTION FOR RAIL MOUNTING,
W. MOUNTING RAIL ADAPTER TYPE OF COORD. 2,IQ =
150KA (ALSO ACHIEVES TYPE OF COORD.1) 1NO+1NC
(CONTACTOR)

General technical data:

Product brand name		SIRIUS
product designation		non-fused load feeders 3RA2
Design of the product		reversing starter
Size of the load feeder		S0
Protection class IP / on the front		IP20
Degree of pollution		3
Insulation voltage / rated value	V	690
Installation altitude / at a height over sea level / maximum	m	2,000
Ambient temperature		
• during transport	°C	-55 ... 80
• during storage	°C	-55 ... 80
• during operating	°C	-20 ... 60
Impulse voltage resistance / rated value	kV	6
Active power loss / per conductor / typical	W	3.5
Item designation		
• according to DIN 40719 extendable after IEC 204-2 / according to IEC 750		Q
• according to DIN EN 61346-2		Q
Type of assignment		2

Mechanical operating cycles as operating time / of the contactor		
• typical		10,000,000
Manufacturer article number		
• of the standard mounting rail adapter included in the scope of supply		3RA2922-1AA00
• of the circuit-breakers included in the scope of supply		3RV2011-1KA10
• of the contactor included in the scope of supply		3RT2024-1BB40
• of the link module included in the scope of supply		3RA2921-1BA00
• of the RH applied assembly kit		3RA2923-1BB1
Design of the switching contact		mechanical
Type of the motor protection		bimetal
Adjustable response current		
• of the current-dependent overload release	A	9 ... 12.5

Communication:		
Product function / bus-communication		No
Protocol / will be supported		
• AS interface protocol		No
• PROFIBUS DP protocol		No
• PROFINET protocol		No
Product extension / function module for communication		No

Main circuit:		
Number of poles / for main current circuit		3
Number of NC contacts / for main contacts		0
Number of NO contacts / for main contacts		3
Operating voltage / at AC-3 / rated value / maximum	V	690
Operating current		
• at AC-1 / at 400 V / rated value	A	12
• at AC-2 / at 400 V / rated value	A	11.5
• at AC-3 / at 400 V / rated value	A	11.5
• at AC-4 / at 400 V / rated value	A	11.5
Service power		
• at AC-2 / at 400 V / rated value	W	5,500
• at AC-3		
• at 400 V / rated value	W	5,500
• at 500 V / rated value	W	5,500
• at 690 V / rated value	W	7,500
• at AC-4 / at 400 V / rated value	W	5,500
Off-load operating frequency	1/h	10,000
Frequency of operation		

- at AC-1 / according to IEC 60947-6-2 / maximum
- at AC-2 / according to IEC 60947-6-2 / maximum
- at AC-3 / according to IEC 60947-6-2 / maximum
- at AC-4 / according to IEC 60947-6-2 / maximum

1/h	1,000
1/h	1,000
1/h	1,000
1/h	300

Control circuit:

Type of voltage / of the controlled supply voltage		DC
Control supply voltage frequency		
• 1 / rated value	Hz	0
Control supply voltage / 1		
• for DC / rated value	V	24
Holding power / of the solenoid / for DC	W	5.9

Auxiliary circuit:

Product extension / auxiliary switch		Yes
Number of NC contacts / for auxiliary contacts		1
Number of NO contacts / for auxiliary contacts		1
Number of change-over switches / for auxiliary contacts		0

Inputs/ Outputs:

Number of digital inputs		0
--------------------------	--	---

Short-circuit:

Product function / short circuit protection		Yes
Design of the short-circuit protection		circuit-breakers
Breaking capacity limit short-circuit current (Icu)		
• at 400 V / rated value	A	100,000
• at 500 V / rated value	A	42,000
• at 690 V / rated value	A	4,000

Installation/mounting/dimensions:

Built in orientation		vertical
Type of mounting		screw and snap-on mounting onto 35 mm standard mounting rail
Width	mm	90
Height	mm	265
Depth	mm	129.9
Distance, to be maintained, to the ranks assembly		
• forwards	mm	10
• backwards	mm	0
• upwards	mm	30
• downwards	mm	30

• sideways	mm	0
Distance, to be maintained, to earthed part		
• forwards	mm	10
• backwards	mm	0
• upwards	mm	30
• downwards	mm	10
• sideways	mm	9
Distance, to be maintained, conductive elements		
• forwards	mm	10
• backwards	mm	0
• upwards	mm	30
• downwards	mm	10
• sideways	mm	9

Connections:

Design of the electrical connection

- for main current circuit
- for auxiliary and control current circuit

screw-type terminals

screw-type terminals

Type of the connectable conductor cross-section

- for main contacts
 - solid
 - stranded
 - finely stranded
 - with conductor end processing
- for AWG conductors / for main contacts
- for auxiliary contacts
 - solid
 - finely stranded
 - with conductor end processing
- for AWG conductors / for auxiliary contacts

2x (1 ... 2.5 mm²), 2x (2.5 ... 10 mm²)

2x (1.0 ... 2.5 mm²), 2x (2.5 ... 10 mm²)

2x (1 ... 2.5 mm²), 2x (2.5 ... 6 mm²), 1x 10 mm²

2 x (16 ... 14), 2x (14 ... 8)

2x (0.5 ... 1.5 mm²), 2x (0.75 ... 2.5 mm²)

2x (0.5 ... 1.5 mm²), 2x (0.75 ... 2.5 mm²)

2x (20 ... 14)

Certificates/approvals:

Verification of suitability

CE / UL / CSA / CCC

Varification of suitability / ATEX

No

General Product Approval	For use in hazardous locations	Test Certificates
---------------------------------	---------------------------------------	--------------------------

[ROSTEST](#)



[DEKRA EXAM, DMT](#)

[Manufacturer](#)

Shipping Approval

other



ABS



PRS



RINA

[Manufacturer](#)

[other](#)

UL/CSA ratings

yielded mechanical performance (hp)

- for single-phase squirrel cage motors
 - at 110/120 V / rated value
 - at 230 V / rated value
- for three-phase squirrel cage motors
 - at 220/230 V / rated value
 - at 460/480 V / rated value
 - at 575/600 V / rated value

hp	0.5
hp	2
hp	3
hp	7.5
hp	10

Operating current (FLA) / for three-phase squirrel cage motors

- at 480 V / rated value
- at 600 V / rated value

A	11
A	11

Contact rating designation / for auxiliary contacts / according to UL

A600 / Q600

Safety:

B10 value / with high demand rate

- according to SN 31920

1,000,000

Failure rate (FIT value) / with low demand rate

- according to SN 31920

FIT 250

Proportion of dangerous failures

- with low demand rate / according to SN 31920
- with high demand rate / according to SN 31920

%	40
%	75

T1 value / for proof test interval or service life

- according to IEC 61508

a 16

Protection against electrical shock

finger-safe

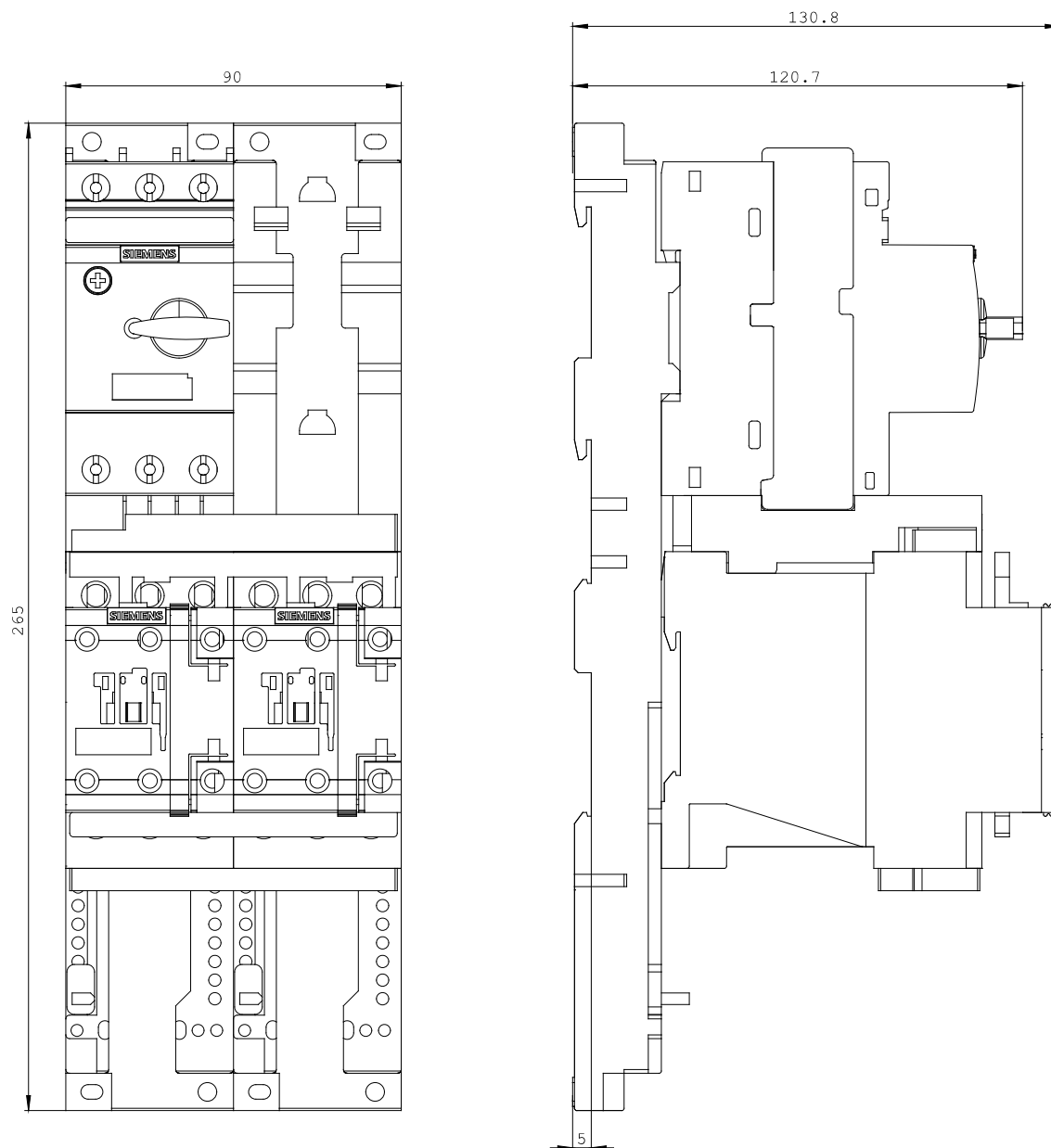
Further information:

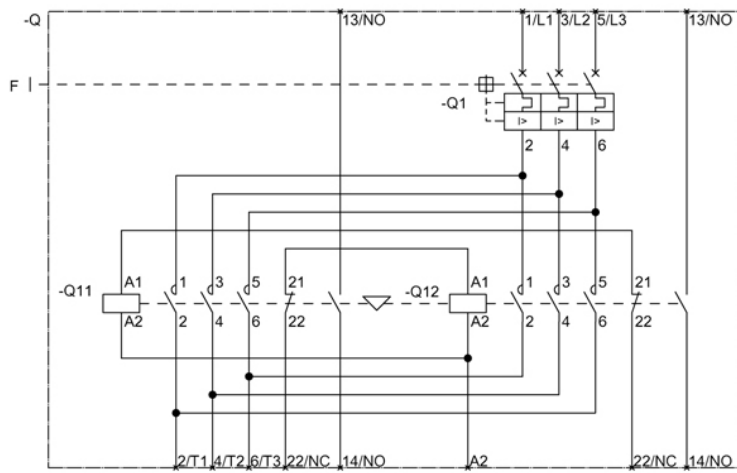
Information- and Downloadcenter (Catalogs, Brochures,...)

<http://www.siemens.com/industrial-controls/catalogs>

Industry Mall (Online ordering system)

<http://www.siemens.com/industrial-controls/mall>





last change:

Oct 17, 2011