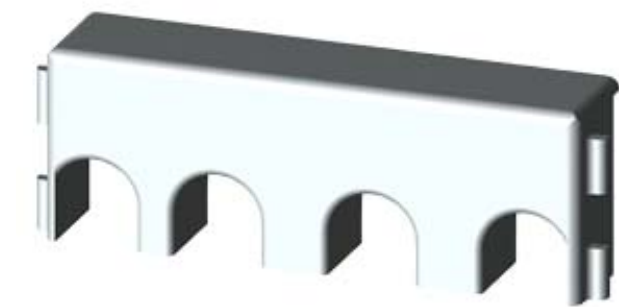


TOUCH PROTECTION COVER FOR 3RU21 ON  
OUTGOING SIDE SZ S00,  
MAIN CIRCUIT: RING CABLE LUG



General technical data:		
Product brand name		SIRIUS
product designation		terminal cover
Design of the product		shock protection for ring cable lug connection
Ambient temperature		
• during storage	°C	-55 ... 80
• during operating	°C	-20 ... 60
Installation/mounting/dimensions:		
Type of mounting		clip-on
Width	mm	45
Height	mm	18
Depth	mm	9

## General Product Approval



[ROSTEST](#)



## Test Certificates

[Manufacturer](#)

## Shipping Approval



## Further information:

### Information- and Downloadcenter (Catalogs, Brochures,...)

<http://www.siemens.com/industrial-controls/catalogs>

### Industry Mall (Online ordering system)

<http://www.siemens.com/industrial-controls/mall>

### CAX-Online-Generator

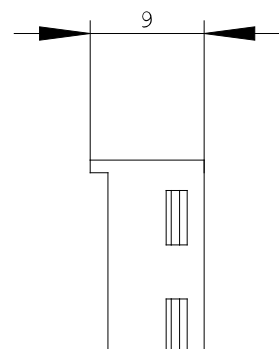
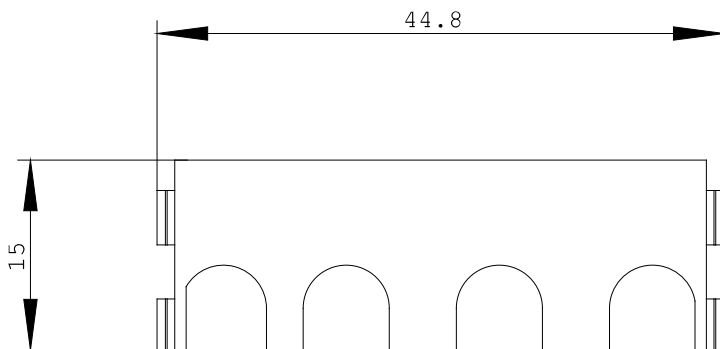
<http://www.siemens.com/cax>

### Service&Support (Manuals, Certificates, Characteristics, FAQs,...)

<http://support.automation.siemens.com/WW/view/en/3RU2916-3BJ20/all>

### Image database (product images, 2D dimension drawings, 3D models, device circuit diagrams, ...)

[http://www.automation.siemens.com/bilddb/cax\\_en.aspx?mlfb=3RU2916-3BJ20](http://www.automation.siemens.com/bilddb/cax_en.aspx?mlfb=3RU2916-3BJ20)



last change:

Aug 22, 2011