

Number of poles

3



FUSE-SWITCH-DISCONNECTOR 3-POLE, NH2,  
400A 60MM BUSBAR SYSTEM COVER LEVEL 32/70 MM  
BOX TERMINAL

Similar to image

### General technical details:

product brand name	SENTRON
Product designation	Fuse switch disconnecter
Fuse system	LV HRC fuse
Installation size of fuse-link	NH1. NH2
Installation size of disconnecting link	2 and 1
Type from device	Zum Aufschrauben auf Sammelschienensystem Siemens 8US 60 mm
Design of the product	3-pole
Busbar design	Sammelschienendicke 5 oder 10 mm
Design of the operating mechanism	handle unit
Type of the driving mechanism / motor drive	No
Number of NC contacts / for auxiliary contacts	0
Number of NO contacts / for auxiliary contacts	0
Number of changeover contacts / for auxiliary contacts	0
Design of the load switch / Strip form	No
Product equipment / interlock	Yes
Product feature / sealable	Yes

<b>Product component</b> <ul style="list-style-type: none"><li>• phase failure monitoring</li><li>• undervoltage release mechanism</li><li>• undervoltage release with leading contact</li><li>• trip indicator</li></ul>		No
		No
		No
		No
<b>Acceptability for application</b> <ul style="list-style-type: none"><li>• switch disconnecter</li><li>• emergency stop switch</li><li>• main switch</li><li>• safety cut-out switch</li><li>• maintenance/repair switch</li></ul>		Yes
		No
		No
		Yes
		Yes
<b>Product function</b> <ul style="list-style-type: none"><li>• fuse monitoring</li><li>• overvoltage protection monitoring</li></ul>		No
		No
<b>Product extension</b> <ul style="list-style-type: none"><li>• auxiliary switch</li><li>• optional<ul style="list-style-type: none"><li>• fuse monitoring</li><li>• phase failure monitoring</li><li>• voltage trigger</li><li>• overvoltage protection monitoring</li><li>• locking capability</li><li>• motor drive</li></ul></li></ul>		Yes
		Yes
		Yes
		No
		Yes
		Yes
		No
		No
<b>Continuous current</b> <ul style="list-style-type: none"><li>• rated value</li><li>• at 35 °C / rated value</li><li>• at 40 °C / rated value</li><li>• at 45 °C / rated value</li><li>• at 50 °C / rated value</li><li>• at 55 °C / rated value</li></ul>	A	400
	A	400
	A	400
	A	392
	A	372
	A	356
<b>Operating current</b> <ul style="list-style-type: none"><li>• at AC-21 B<ul style="list-style-type: none"><li>• at 400 V / rated value</li><li>• at 500 V / rated value</li><li>• at 690 V / rated value</li></ul></li><li>• at AC-22 B<ul style="list-style-type: none"><li>• at 400 V / rated value</li><li>• at 500 V / rated value</li><li>• at 690 V / rated value</li></ul></li><li>• at AC-23 B</li></ul>	A	400
	A	400
	A	400
	A	400
	A	400
	A	400
	A	400
	A	400
	A	400

• at 400 V / rated value	A	400
• at 500 V / rated value	A	315
• at 690 V / rated value	A	125
• at DC-21 B		
• at 240 V / rated value / maximum	A	400
• at 440 V / rated value / maximum	A	400
• at DC-22 B		
• at 240 V / rated value / maximum	A	400
• at 440 V / rated value / maximum	A	315
• at DC-23 B		
• at 240 V / rated value / maximum	A	250
• at 440 V / rated value / maximum	A	160
• with capacitive load		
• at 400 V / maximum	A	72
• at 500 V / maximum	A	55
<b>Let-through current</b>		
• with speedy activation / maximum permissible	kA	40
• with closed switch / maximum permissible	kA	40
<b>Conditional short-circuit current (I<sub>q</sub>)</b>		
• rated value	kA	80
• at 500 V / with AC / with speedy activation / rated value	kA	80
• at 690 V / with AC / with speedy activation / rated value	kA	50
• with closed switch		
• at 500 V / with AC / rated value	kA	100
• at 690 V / with AC / rated value	kA	100
<b>Operating voltage / for DC / rated value</b>		
	V	440
<b>Tension d'emploi</b>		
• for AC / rated value	/ V	690
• for DC / rated value		
• maximum	V	440
<b>Power factor</b>		
• at AC-21 B		0.95
• at AC-22 B		0.65
• at AC-23 B		0.35
• with capacitive load		-0.25
<b>Active power loss / maximum</b>		
	W	34
<b>Insulation voltage / rated value</b>		
	V	690
<b>Impulse voltage resistance / rated value</b>		
	kV	8
<b>I<sup>2</sup>t value / with closed switch / maximum permissible</b>		
	kA <sup>2</sup> ·s	2,150
<b>Item designation</b>		

- according to DIN EN 61346-2
- according to DIN EN 81346-2

Q  
Q

#### Connection elements and terminals:

##### Design of the electrical connection / for main current circuit

box terminals

##### Conductor cross section that can be connected / for main contacts

- single- or multi-stranded
- stranded

mm<sup>2</sup>

120 ... 300

mm<sup>2</sup>

120 ... 300

##### Type of connectable conductor cross-sections / of laminated conductors

- maximum

10 x 32 mm

##### Tightening torque

- with screw-type terminals

N·m

10 ... 25

##### Arrangement of electrical connectors / for main current circuit

sonstige

#### Degree of protection and safety class:

##### IP degree of protection

- open
- on the front
- with closed switch
  - without cover or cable lug cover
  - with cover or cable lug cover

IP20

IP40

IP30

IP40

##### Degree of pollution

3

##### Mechanical operating cycles as operating time / typical

1,000

#### Ambient conditions:

##### Ambient temperature

- during operating
- during storage

°C

-25 ... +55

°C

-50 ... +80

#### Installation/mounting/dimensions:

##### Mounting type

- rail mounting
- front mounting
- front mounting with central attachment
- front mounting with 4-hole attachment
- floor mounting

busbar mounting

Yes

No

No

No

No

##### mounting position

waagrecht oder senkrecht

##### Width

mm

209.4

##### Height

mm

306

##### Depth

mm

155.9

##### Largeur

• du jeu de barres	mm	12 ... 30
Center line spacing	mm	60
Net weight	kg	4.76

#### Certificates/approvals:

##### General Product Approval

##### Declaration of Conformity



CCC



GOST



UL



UR



EG-Konf.

##### Test Certificates

##### Shipping Approval

[Special Test Certificate](#)

[Type Test Certificates/Test Report](#)



DNV



GL



LRS

#### Further information:

##### Information- and Downloadcenter (Catalogs, Brochures,...)

<http://www.siemens.com/lowvoltage/catalogs>

##### Industry Mall (Online ordering system)

<https://eb.automation.siemens.com/mall/en/WW/Catalog/Product/3NP1153-1BC20>

##### Service&Support (Manuals, Certificates, Characteristics, FAQs,...)

<http://support.automation.siemens.com/WW/view/en/3NP1153-1BC20/all>

##### Image database (product images, 2D dimension drawings, 3D models, device circuit diagrams, ...)

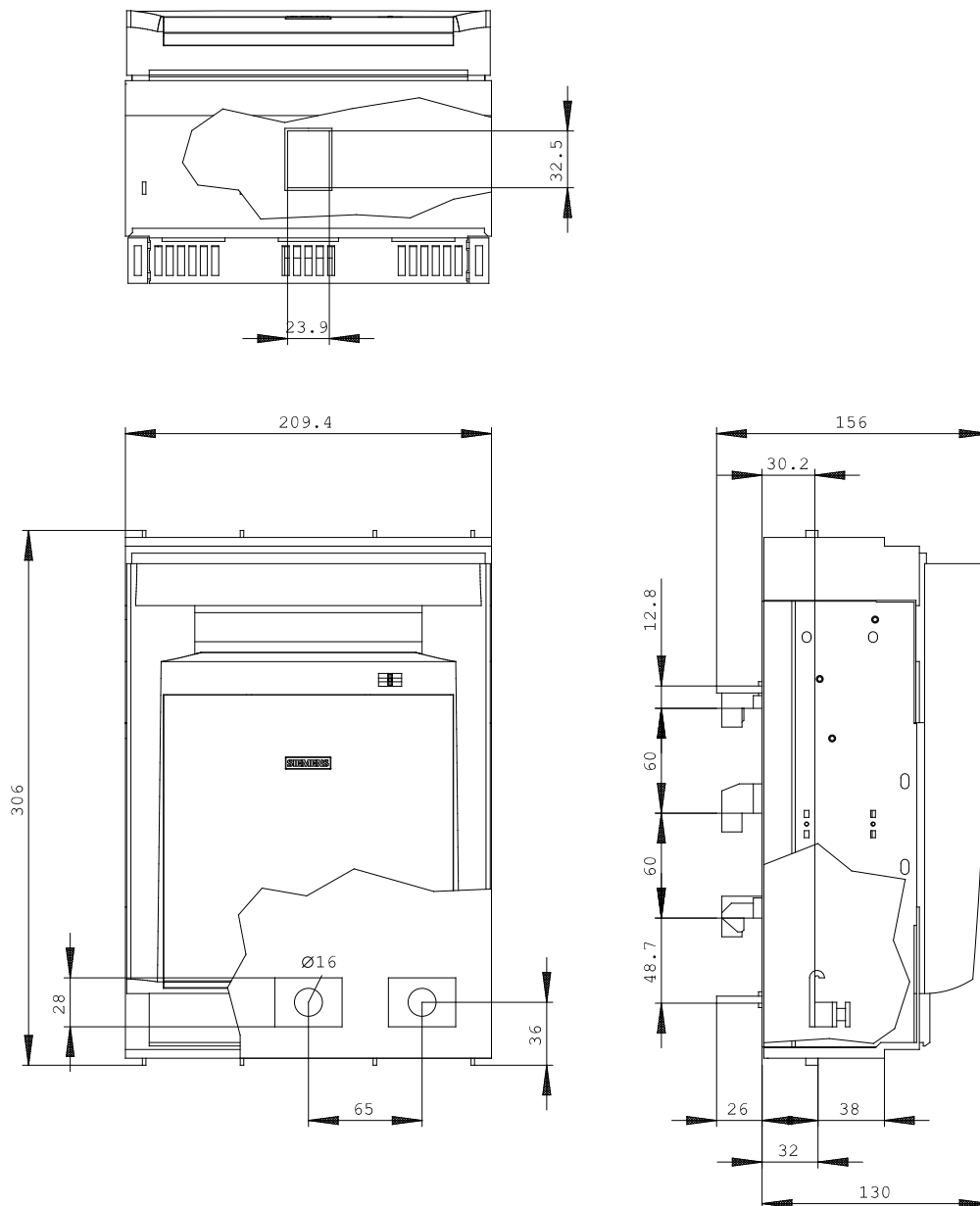
[http://www.automation.siemens.com/bilddb/cax\\_en.aspx?mlfb=3NP1153-1BC20](http://www.automation.siemens.com/bilddb/cax_en.aspx?mlfb=3NP1153-1BC20)

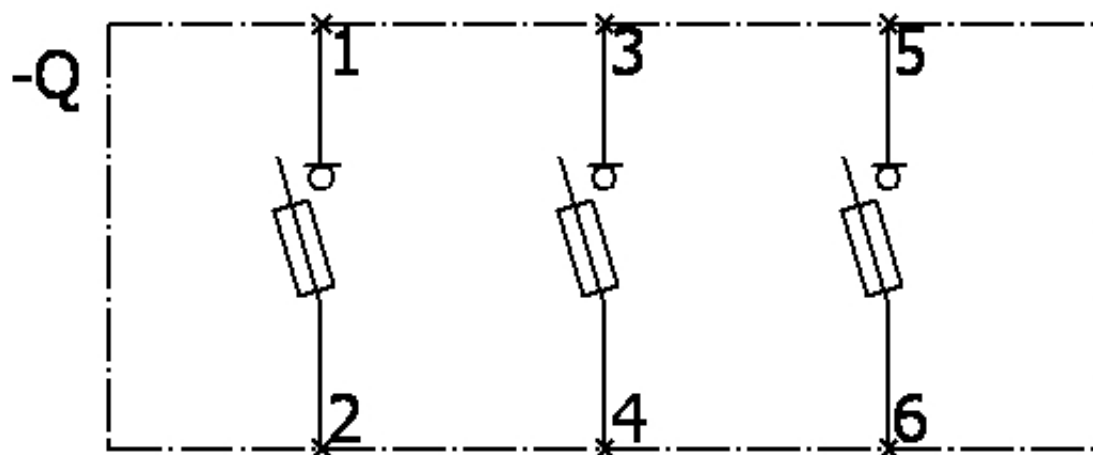
##### CAX-Online-Generator

<http://www.siemens.com/cax>

##### Tender specifications

[Datanorm](#) [GAEB81](#) [GAEB83](#) [RTF](#) [TXT](#)





last change:

Mar 31, 2014