

Number of poles

3



FUSE-SWITCH-DISCONNECTOR 3-POLE, NH1,
250A 60MM BUSBAR SYSTEM COVER LEVEL 32/70 MM
BOX TERMINAL FUSE MONITORING ELECTRONIC,
EFM 10

Similar to image

General technical details:

product brand name	SENTRON
Product designation	Fuse switch disconnecter
Fuse system	LV HRC fuse
Installation size of fuse-link	NH0, NH1
Installation size of disconnecting link	1 and 0
Type from device	Zum Aufsnappen auf Sammelschienensystem Siemens 8US 60 mm
Design of the product	3-pole
Busbar design	Sammelschienendicke 5 oder 10 mm
Design of the operating mechanism	handle unit
Type of the driving mechanism / motor drive	No
Design of the safety monitoring	elektronisch EFM10
Number of NC contacts / for auxiliary contacts	0
Number of NO contacts / for auxiliary contacts	0
Number of changeover contacts / for auxiliary contacts	0
Design of the load switch / Strip form	No
Product equipment / interlock	Yes









Product feature / sealable		Yes
Product component		
• phase failure monitoring		No
• undervoltage release mechanism		No
• undervoltage release with leading contact		No
• trip indicator		Yes
Acceptability for application		
• switch disconnecter		Yes
• emergency stop switch		No
• main switch		No
• safety cut-out switch		Yes
• maintenance/repair switch		Yes
Product function		
• fuse monitoring		Yes
• overvoltage protection monitoring		No
Product extension		
• auxiliary switch		Yes
• optional		
• phase failure monitoring		Yes
• voltage trigger		No
• overvoltage protection monitoring		Yes
• locking capability		Yes
• motor drive		No
Continuous current		
• rated value	A	250
• at 35 °C / rated value	A	250
• at 40 °C / rated value	A	245
• at 45 °C / rated value	A	240
• at 50 °C / rated value	A	233
• at 55 °C / rated value	A	233
Operating current		
• at AC-21 B		
• at 400 V / rated value	A	250
• at 500 V / rated value	A	250
• at 690 V / rated value	A	250
• at AC-22 B		
• at 400 V / rated value	A	250
• at 500 V / rated value	A	250
• at 690 V / rated value	A	250
• at AC-23 B		

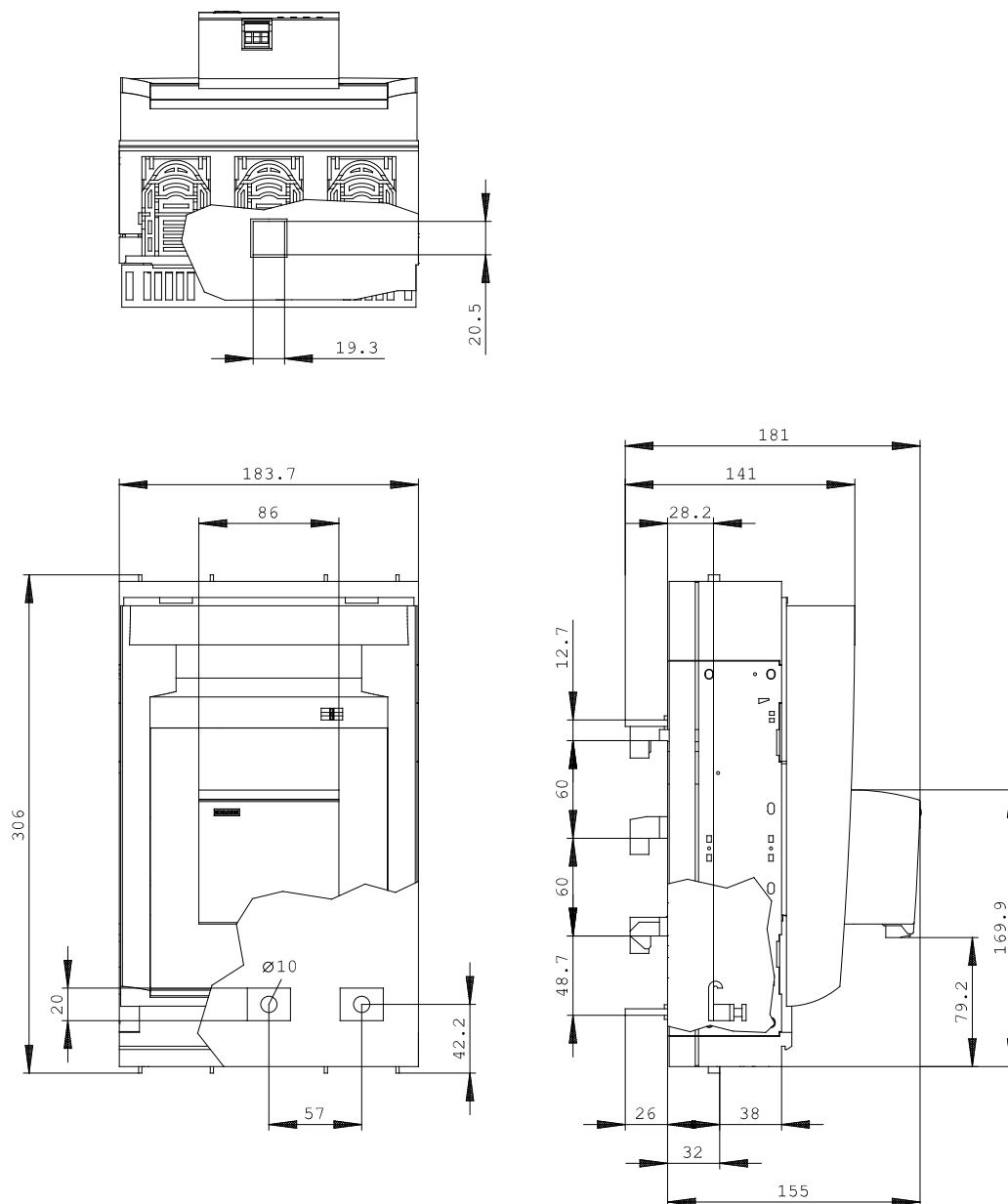
• at 400 V / rated value	A	250
• at 500 V / rated value	A	200
• at 690 V / rated value	A	100
• with capacitive load		
• at 400 V / maximum	A	72
• at 500 V / maximum	A	55
Let-through current		
• with speedy activation / maximum permissible	kA	25
• with closed switch / maximum permissible	kA	32
Conditional short-circuit current (I_q)		
• rated value	kA	80
• at 500 V / with AC / with speedy activation / rated value	kA	80
• at 690 V / with AC / with speedy activation / rated value	kA	50
• with closed switch		
• at 500 V / with AC / rated value	kA	120
• at 690 V / with AC / rated value	kA	100
Tension d'emploi		
• for AC / rated value	V	230 ... 690
Power factor		
• at AC-21 B		0.95
• at AC-22 B		0.65
• at AC-23 B		0.45
• with capacitive load		-0.25
Active power loss / maximum	W	23
Insulation voltage / rated value	V	690
Impulse voltage resistance / rated value	kV	8
I_{2t} value / with closed switch / maximum permissible	kA ² ·s	780
Item designation		
• according to DIN EN 61346-2		Q
• according to DIN EN 81346-2		Q

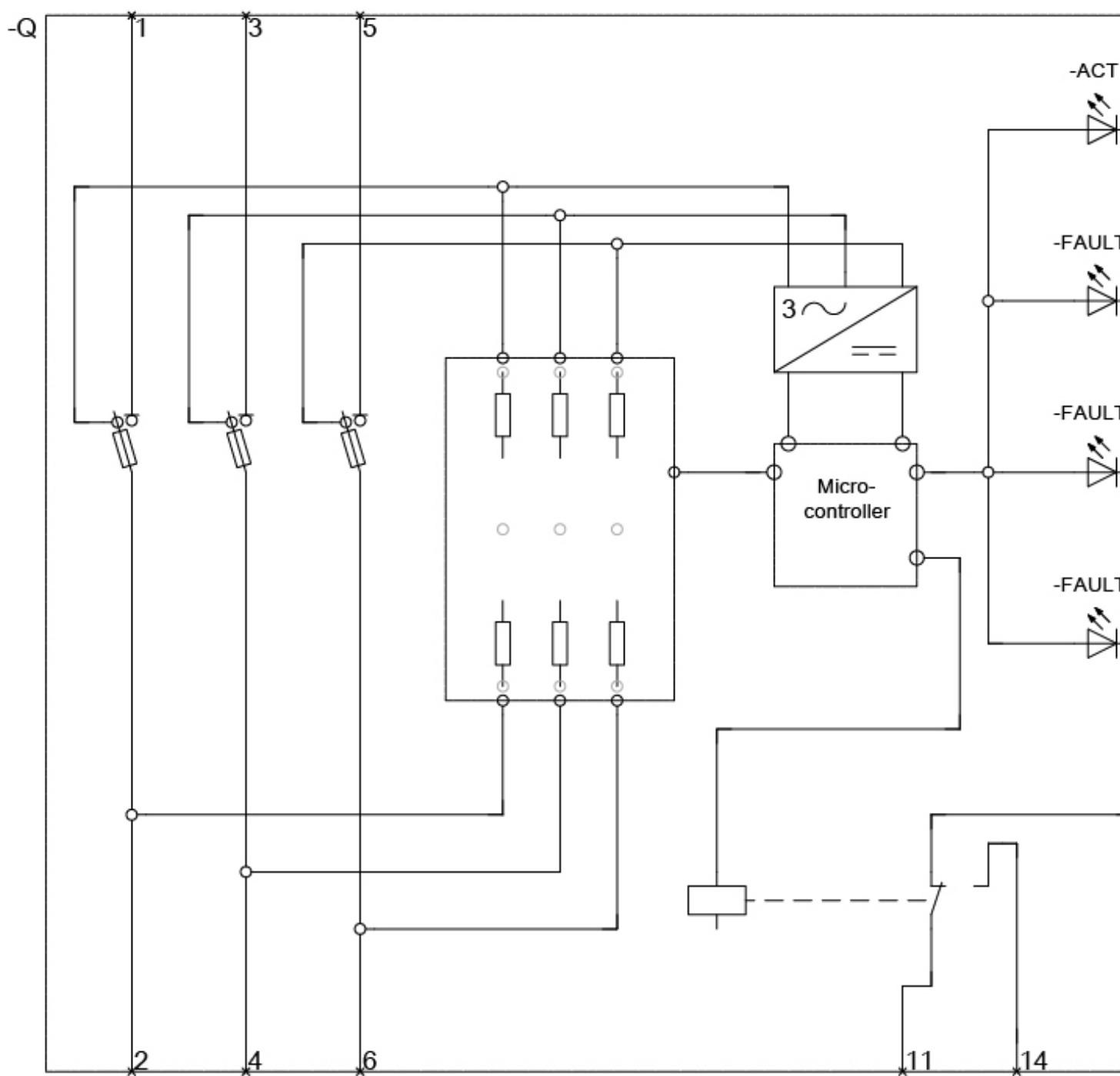
Connection elements and terminals:

Design of the electrical connection / for main current circuit		box terminals
Conductor cross section that can be connected / for main contacts		
• single- or multi-stranded	mm ²	70 ... 185
• stranded	mm ²	70 ... 185
Type of connectable conductor cross-sections / of laminated conductors		
• maximum		10 x 20 mm
Tightening torque		

• with screw-type terminals	N·m	10 ... 10
Arrangement of electrical connectors / for main current circuit		sonstige
Degree of protection and safety class:		
IP degree of protection		
• open		IP20
• on the front		IP40
• with closed switch		
• without cover or cable lug cover		IP30
• with cover or cable lug cover		IP40
Degree of pollution		3
Mechanical operating cycles as operating time / typical		1,600
Ambient conditions:		
Ambient temperature		
• during operating	°C	-25 ... +55
• during storage	°C	-50 ... +80
Installation/mounting/dimensions:		
Mounting type		busbar mounting
• rail mounting		Yes
• front mounting		No
• front mounting with central attachment		No
• front mounting with 4-hole attachment		No
• floor mounting		No
mounting position		waagrecht oder senkrecht
Width	mm	183.7
Height	mm	306
Depth	mm	172.3
Largeur		
• du jeu de barres	mm	12 ... 30
Center line spacing	mm	60
Net weight	kg	2.99
Certificates/approvals:		

General Product Approval				Declaration of Conformity	Test Certificates
					Type Test Certificates/Test Report
CCC	GOST	UL	UR	EG-Konf.	
Shipping Approval					
					
DNV	GL	LRS			
Further information:					
Information- and Downloadcenter (Catalogs, Brochures,...) http://www.siemens.com/lowvoltage/catalogs					
Industry Mall (Online ordering system) https://eb.automation.siemens.com/mall/en/WW/Catalog/Product/3NP1143-1BC22					
Service&Support (Manuals, Certificates, Characteristics, FAQs,...) http://support.automation.siemens.com/WW/view/en/3NP1143-1BC22/all					
Image database (product images, 2D dimension drawings, 3D models, device circuit diagrams, ...) http://www.automation.siemens.com/bilddb/cax_en.aspx?mlfb=3NP1143-1BC22					
CAX-Online-Generator http://www.siemens.com/cax					
Tender specifications Datanorm GAEB81 GAEB83 RTF TXT					





last change:

Mar 17, 2014