

Number of poles

3



FUSE-SWITCH-DISCONNECTOR 3-POLE, NH1,
250A 60MM BUSBAR SYSTEM COVER LEVEL 32/70 MM
BOX TERMINAL

Similar to image

General technical details:

product brand name	SENTRON
Product designation	Fuse switch disconnecter
Fuse system	LV HRC fuse
Installation size of fuse-link	NH0, NH1
Installation size of disconnecting link	1 and 0
Type from device	Zum Aufschrauben auf Sammelschienensystem Siemens 8US 60 mm
Design of the product	3-pole
Busbar design	Sammelschienenendicke 5 oder 10 mm
Design of the operating mechanism	handle unit
Type of the driving mechanism / motor drive	No
Number of NC contacts / for auxiliary contacts	0
Number of NO contacts / for auxiliary contacts	0
Number of changeover contacts / for auxiliary contacts	0
Design of the load switch / Strip form	No
Product equipment / interlock	Yes
Product feature / sealable	Yes

Product component <ul style="list-style-type: none">• phase failure monitoring• undervoltage release mechanism• undervoltage release with leading contact• trip indicator		No
		No
		No
		No
Acceptability for application <ul style="list-style-type: none">• switch disconnecter• emergency stop switch• main switch• safety cut-out switch• maintenance/repair switch		Yes
		No
		No
		Yes
		Yes
Product function <ul style="list-style-type: none">• fuse monitoring• overvoltage protection monitoring		No
		No
Product extension <ul style="list-style-type: none">• auxiliary switch• optional<ul style="list-style-type: none">• fuse monitoring• phase failure monitoring• voltage trigger• overvoltage protection monitoring• locking capability• motor drive		Yes
		Yes
		Yes
		No
		Yes
		Yes
		No
		No
Continuous current <ul style="list-style-type: none">• rated value• at 35 °C / rated value• at 40 °C / rated value• at 45 °C / rated value• at 50 °C / rated value• at 55 °C / rated value	A	250
	A	250
	A	245
	A	240
	A	233
	A	233
Operating current <ul style="list-style-type: none">• at AC-21 B<ul style="list-style-type: none">• at 400 V / rated value• at 500 V / rated value• at 690 V / rated value• at AC-22 B<ul style="list-style-type: none">• at 400 V / rated value• at 500 V / rated value• at 690 V / rated value• at AC-23 B	A	250
	A	250
	A	250
	A	250
	A	250
	A	250
	A	250
	A	250
	A	250

• at 400 V / rated value	A	250
• at 500 V / rated value	A	200
• at 690 V / rated value	A	100
• at DC-21 B		
• at 240 V / rated value / maximum	A	250
• at 440 V / rated value / maximum	A	250
• at DC-22 B		
• at 240 V / rated value / maximum	A	250
• at 440 V / rated value / maximum	A	200
• at DC-23 B		
• at 240 V / rated value / maximum	A	200
• at 440 V / rated value / maximum	A	100
• with capacitive load		
• at 400 V / maximum	A	72
• at 500 V / maximum	A	55
Let-through current		
• with speedy activation / maximum permissible	kA	25
• with closed switch / maximum permissible	kA	32
Conditional short-circuit current (I_q)		
• rated value	kA	80
• at 500 V / with AC / with speedy activation / rated value	kA	80
• at 690 V / with AC / with speedy activation / rated value	kA	50
• with closed switch		
• at 500 V / with AC / rated value	kA	120
• at 690 V / with AC / rated value	kA	100
Operating voltage / for DC / rated value		
	V	440
Tension d'emploi		
• for AC / rated value	/ V	690
• for DC / rated value		
• maximum	V	440
Power factor		
• at AC-21 B		0.95
• at AC-22 B		0.65
• at AC-23 B		0.45
• with capacitive load		-0.25
Active power loss / maximum		
	W	23
Insulation voltage / rated value		
	V	690
Impulse voltage resistance / rated value		
	kV	8
I²t value / with closed switch / maximum permissible		
	kA ² ·s	780
Item designation		

- according to DIN EN 61346-2
- according to DIN EN 81346-2

Q
Q

Connection elements and terminals:

Design of the electrical connection / for main current circuit

box terminals

Conductor cross section that can be connected / for main contacts

- single- or multi-stranded
- stranded

mm²

70 ... 185

mm²

70 ... 185

Type of connectable conductor cross-sections / of laminated conductors

- maximum

10 x 20 mm

Tightening torque

- with screw-type terminals

N·m

10 ... 10

Arrangement of electrical connectors / for main current circuit

sonstige

Degree of protection and safety class:

IP degree of protection

- open
- on the front
- with closed switch
 - without cover or cable lug cover
 - with cover or cable lug cover

IP20

IP40

IP30

IP40

Degree of pollution

3

Mechanical operating cycles as operating time / typical

1,600

Ambient conditions:

Ambient temperature

- during operating
- during storage

°C

-25 ... +55

°C

-50 ... +80

Installation/mounting/dimensions:

Mounting type

- rail mounting
- front mounting
- front mounting with central attachment
- front mounting with 4-hole attachment
- floor mounting

busbar mounting

Yes

No

No

No

No

mounting position

waagrecht oder senkrecht

Width

mm

183.7

Height

mm

306

Depth

mm

141

Largeur

• du jeu de barres	mm	12 ... 30
Center line spacing	mm	60
Net weight	kg	2.85

Certificates/approvals:

General Product Approval

Declaration of Conformity



CCC



GOST



UL



UR



EG-Konf.

Test Certificates

Shipping Approval

[Special Test Certificate](#)

[Type Test Certificates/Test Report](#)



DNV



GL



LRS

Further information:

Information- and Downloadcenter (Catalogs, Brochures,...)

<http://www.siemens.com/lowvoltage/catalogs>

Industry Mall (Online ordering system)

<https://eb.automation.siemens.com/mall/en/WW/Catalog/Product/3NP1143-1BC20>

Service&Support (Manuals, Certificates, Characteristics, FAQs,...)

<http://support.automation.siemens.com/WW/view/en/3NP1143-1BC20/all>

Image database (product images, 2D dimension drawings, 3D models, device circuit diagrams, ...)

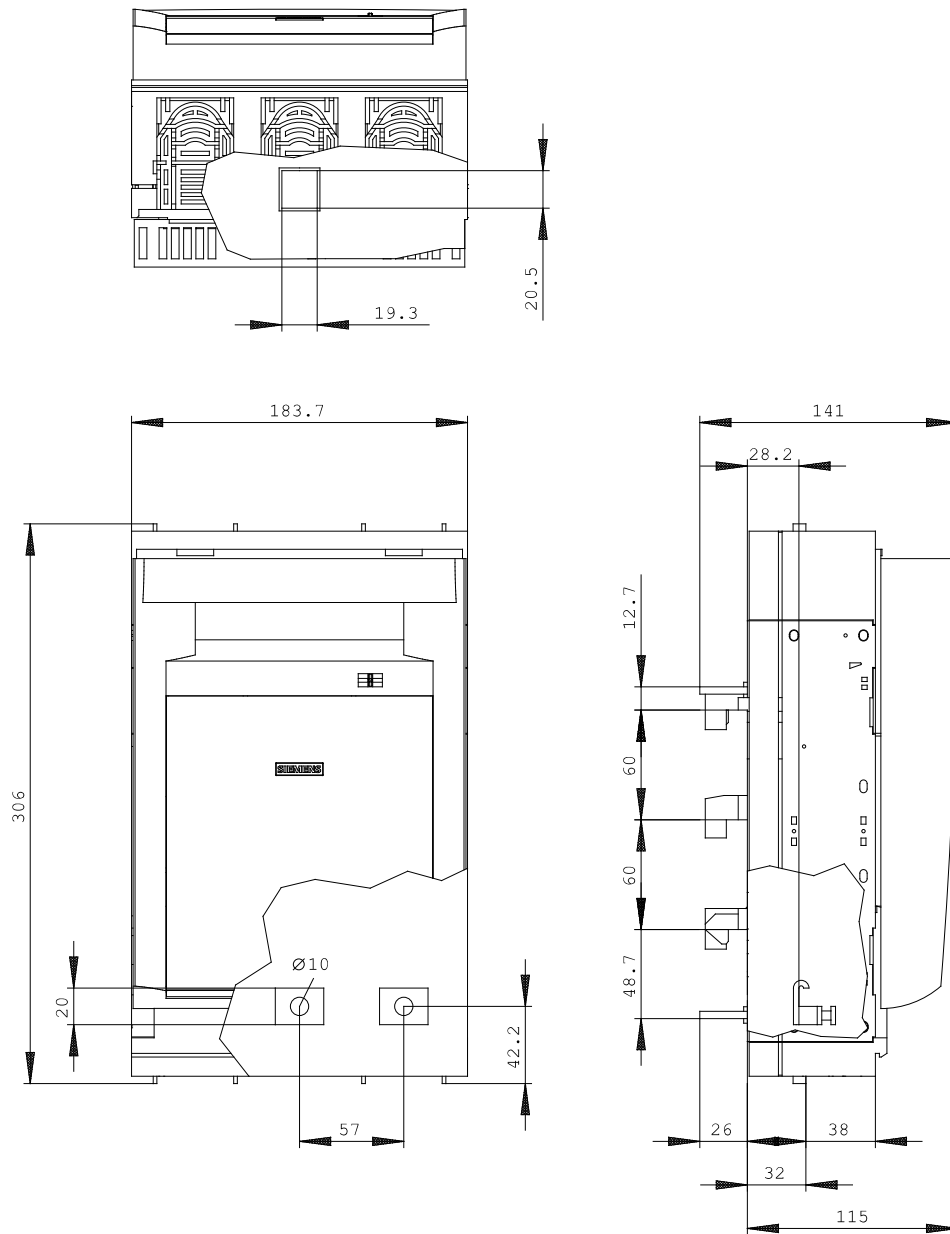
http://www.automation.siemens.com/bilddb/cax_en.aspx?mlfb=3NP1143-1BC20

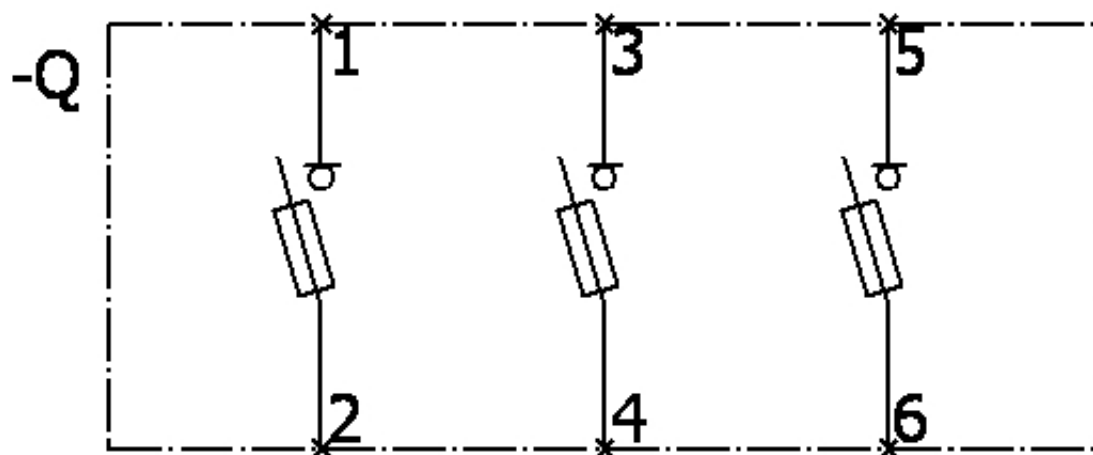
CAX-Online-Generator

<http://www.siemens.com/cax>

Tender specifications

[Datanorm](#) [GAEB81](#) [GAEB83](#) [RTF](#) [TXT](#)





last change:

Mar 31, 2014