

Number of poles

3



FUSE-SWITCH-DISCONNECTOR 3-POLE, NH000, 160A 40MM BUSBAR SYSTEM COVER LEVEL 32/70 MM BOX TERMINAL FUSE MONITORING ELECTRONIC, EFM 20

Similar to image

General technical details:

product brand name	SENTRON
Product designation	Fuse switch disconnecter
Fuse system	LV HRC fuse
Installation size of fuse-link	NH000
Installation size of disconnecting link	000
Type from device	Zum Aufsnappen auf Sammelschienensystem Siemens 8US 40 mm
Design of the product	3-pole
Busbar design	Sammelschienendicke 5 oder 10 mm
Design of the operating mechanism	handle unit
Type of the driving mechanism / motor drive	No
Design of the safety monitoring	elektronisch EFM20
Number of NC contacts / for auxiliary contacts	0
Number of NO contacts / for auxiliary contacts	0
Number of changeover contacts / for auxiliary contacts	0
Design of the load switch / Strip form	No
Product equipment / interlock	Yes

Product feature / sealable		Yes
Product component		
• phase failure monitoring		Yes
• undervoltage release mechanism		No
• undervoltage release with leading contact		No
• trip indicator		Yes
Acceptability for application		
• switch disconnecter		Yes
• emergency stop switch		No
• main switch		No
• safety cut-out switch		Yes
• maintenance/repair switch		Yes
Product function		
• fuse monitoring		Yes
• overvoltage protection monitoring		Yes
Product extension		
• auxiliary switch		Yes
• optional		
• voltage trigger		No
• locking capability		Yes
• motor drive		No
Continuous current		
• rated value	A	100
• at 35 °C / rated value	A	160
• at 40 °C / rated value	A	150
• at 45 °C / rated value	A	140
• at 50 °C / rated value	A	130
• at 55 °C / rated value	A	120
Operating current		
• at AC-21 B		
• at 400 V / rated value	A	160
• at 500 V / rated value	A	160
• at 690 V / rated value	A	160
• at AC-22 B		
• at 400 V / rated value	A	160
• at 500 V / rated value	A	125
• at 690 V / rated value	A	50
• at AC-23 B		
• at 400 V / rated value	A	160
• at 500 V / rated value	A	40

• at 690 V / rated value	A	25
• with capacitive load		
• at 400 V / maximum	A	72
• at 500 V / maximum	A	55
Let-through current		
• with speedy activation / maximum permissible	kA	10
• with closed switch / maximum permissible	kA	15
Conditional short-circuit current (I_q)		
• rated value	kA	80
• at 500 V / with AC / with speedy activation / rated value	kA	80
• at 690 V / with AC / with speedy activation / rated value	kA	80
• with closed switch		
• at 500 V / with AC / rated value	kA	120
• at 690 V / with AC / rated value	kA	120
Tension d'emploi		
• for AC / rated value	V	230 ... 690
Power factor		
• at AC-21 B		0.95
• at AC-22 B		0.65
• at AC-23 B		0.45
• with capacitive load		-0.25
Active power loss / maximum	W	9
Insulation voltage / rated value	V	690
Impulse voltage resistance / rated value	kV	8
I_{2t} value / with closed switch / maximum permissible	kA ² ·s	56
Item designation		
• according to DIN EN 61346-2		Q
• according to DIN EN 81346-2		Q

Connection elements and terminals:

Design of the electrical connection / for main current circuit		box terminals
Conductor cross section that can be connected / for main contacts		
• single- or multi-stranded	mm ²	1.5 ... 50
• stranded	mm ²	1.5 ... 50
• stranded wire / with conductor end processing	mm ²	1.5 ... 35
Type of connectable conductor cross-sections / of laminated conductors		
• maximum		8 x 8 mm
Tightening torque		
• with screw-type terminals	N·m	10 ... 12

Arrangement of electrical connectors / for main current circuit		sonstige
Degree of protection and safety class:		
IP degree of protection		
• open		IP20
• on the front		IP40
• with closed switch		
• without cover or cable lug cover		IP30
• with cover or cable lug cover		IP40
Degree of pollution		3
Mechanical operating cycles as operating time / typical		2,000
Ambient conditions:		
Ambient temperature		
• during operating	°C	-25 ... +55
• during storage	°C	-50 ... +80
Installation/mounting/dimensions:		
Mounting type		busbar mounting
• rail mounting		Yes
• front mounting		No
• front mounting with central attachment		No
• front mounting with 4-hole attachment		No
• floor mounting		No
mounting position		waagrecht oder senkrecht
Width	mm	88.8
Height	mm	211.4
Depth	mm	169
Largeur		
• du jeu de barres	mm	12 ... 15
Center line spacing	mm	40
Net weight	kg	0.94
Certificates/approvals:		

General Product Approval**Declaration of
Conformity**

CB



CCC



GOST



UL



UR



EG-Konf.

Test Certificates

[Type Test
Certificates/Test
Report](#)



DNV



GL



LRS

Shipping Approval**Further information:****Information- and Downloadcenter (Catalogs, Brochures,...)**

<http://www.siemens.com/lowvoltage/catalogs>

Industry Mall (Online ordering system)

<https://eb.automation.siemens.com/mall/en/WW/Catalog/Product/3NP1123-1BB23>

Service&Support (Manuals, Certificates, Characteristics, FAQs,...)

<http://support.automation.siemens.com/WW/view/en/3NP1123-1BB23/all>

Image database (product images, 2D dimension drawings, 3D models, device circuit diagrams, ...)

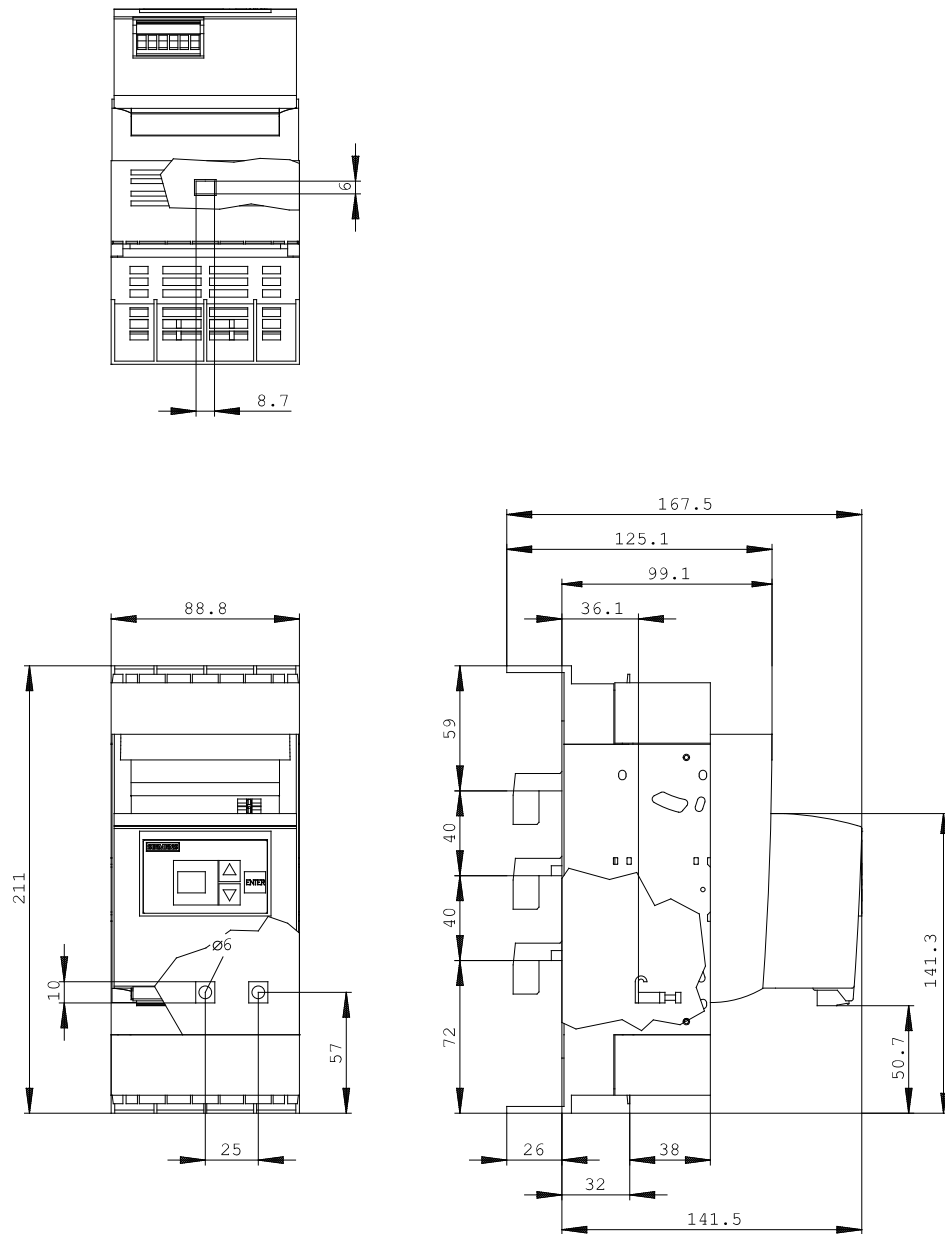
http://www.automation.siemens.com/bilddb/cax_en.aspx?mlfb=3NP1123-1BB23

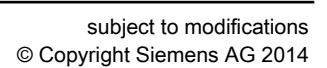
CAX-Online-Generator

<http://www.siemens.com/cax>

Tender specifications

[Datanorm](#) [GAEB81](#) [GAEB83](#) [RTF](#) [TXT](#)





last change:

Mar 31, 2014