



VOLTAGE RELEASE, AC 500V, 50/60 HZ,  
100% ED, AC 500V, 50/60 HZ, 5SEC ED,  
DC 500V, 5SEC ED, W. SCREW CONNECTION;  
FOR CIRCUIT-BREAKERS, SZ S00/S0

### General technical data:

|  |    |                       |
|--|----|-----------------------|
| Product brand name   |    | SIRIUS                |
| product designation  |    | shunt release         |
| Size of the circuit-breaker  |    | S00, S0               |
| Acceptability for application  |    | motor circuit breaker |
| Protection class IP / on the front   |    | IP20                  |
| Design of the short-circuit protection                                     |    | fuse                  |
| Degree of pollution  |    | 3                     |
| Insulation voltage / rated value   | V  | 690                   |
| Insulation voltage / with degree of pollution 3 / rated value              | V  | 690                   |
| Ambient temperature  |    |                       |
| • during storage   | °C | -50 ... 80            |
| • during operating   | °C | -20 ... 60            |
| Item designation   |    |                       |
| • according to DIN 40719 extendable after IEC 204-2 / according to IEC 750 |    | F                     |
| • according to DIN EN 61346-2  |    | F                     |

### Auxiliary circuit:

|  |  |   |
|--|--|---|
| Number of NC contacts / for auxiliary contacts |  |   |
| • instantaneous switching                      |  | 0 |

|  |  |   |
|--|--|---|
| <b>Number of NO contacts / for auxiliary contacts</b>            |  |   |
| • instantaneous switching  |  | 0 |
| <b>Number of changeover contacts / of the auxiliary contacts</b> |  |   |
| • instantaneous switching  |  | 0 |

#### Control circuit:

|   |    |     |
|---|----|-----|
| <b>Type of voltage / of the controlled supply voltage</b> |    | AC  |
| <b>Control supply voltage frequency</b>                   |    |     |
| • 1 / initial rated value                                 | Hz | 50  |
| • 1 / final rated value                                   | Hz | 60  |
| <b>Control supply voltage</b>                             |    |     |
| • 1 / at 50 Hz / for AC / rated value                     | V  | 500 |
| • 1 / at 60 Hz / for AC / rated value                     | V  | 500 |

#### Installation/mounting/dimensions:

|                         |    |                  |
|-------------------------|----|------------------|
| <b>Type of mounting</b> |    | snap-on mounting |
| <b>Width</b>            | mm | 18.5             |
| <b>Height</b>           | mm | 90               |
| <b>Depth</b>            | mm | 68               |

#### Certificates/approvals:

|                                    |                     |
|------------------------------------|---------------------|
| <b>Verification of suitability</b> | CE / UL / CSA / CCC |
|------------------------------------|---------------------|

##### General Product Approval

##### Test Certificates



[Manufacturer](#)

##### Shipping Approval



##### other

[Manufacturer](#)

[other](#)



#### Further information:

##### Information- and Downloadcenter (Catalogs, Brochures,...)

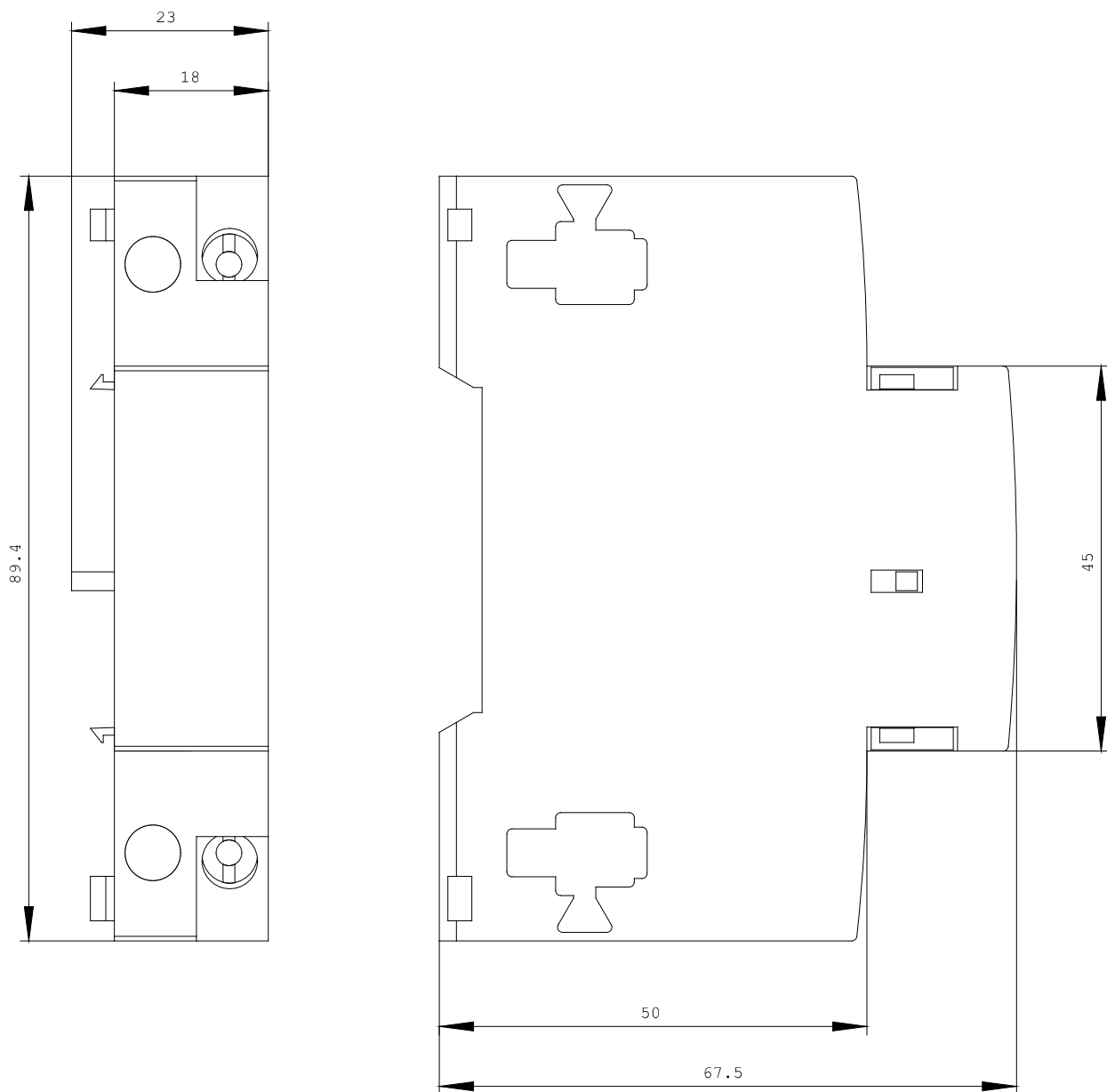
<http://www.siemens.com/industrial-controls/catalogs>

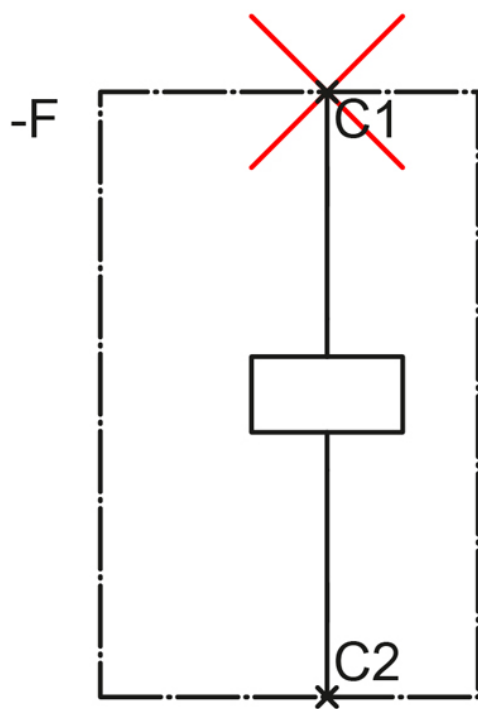
##### Industry Mall (Online ordering system)

<http://www.siemens.com/industrial-controls/mall>

##### CAX-Online-Generator

<http://www.siemens.com/cax>





last change:

Aug 24, 2011