



VOLTAGE RELEASE, AC 210...240V,
50/60HZ, 100% ED, AC 190...330V, 50/60HZ,
5SEC ED, DC 190...330V, 5SEC ED,
WITH RING CABLE LUG CONNECTION,
FOR CIRCUIT-BREAKERS, SZ S00/S0

General technical data:

| | | |
|--|----|-----------------------|
| Product brand name | | SIRIUS |
| product designation | | shunt release |
| Size of the circuit-breaker | | S00, S0 |
| Acceptability for application | | motor circuit breaker |
| Protection class IP / on the front | | IP20 |
| Design of the short-circuit protection | | fuse |
| Degree of pollution | | 3 |
| Insulation voltage / rated value | V | 690 |
| Insulation voltage / with degree of pollution 3 / rated value | V | 690 |
| Ambient temperature | | |
| • during storage | °C | -50 ... 80 |
| • during operating | °C | -20 ... 60 |
| Item designation | | |
| • according to DIN 40719 extendable after IEC 204-2 / according to IEC 750 | | F |
| • according to DIN EN 61346-2 | | F |

Auxiliary circuit:

| | | |
|--|--|---|
| Number of NC contacts / for auxiliary contacts | | |
| • instantaneous switching | | 0 |

| | | |
|--|--|---|
| Number of NO contacts / for auxiliary contacts | | |
| • instantaneous switching | | 0 |
| Number of changeover contacts / of the auxiliary contacts | | |
| • instantaneous switching | | 0 |

Control circuit:

| | | |
|---|----|-----|
| Type of voltage / of the controlled supply voltage | | AC |
| Control supply voltage frequency | | |
| • 1 / initial rated value | Hz | 50 |
| • 1 / final rated value | Hz | 60 |
| Control supply voltage | | |
| • 1 / at 50 Hz / for AC / initial rated value | V | 210 |
| • 1 / at 50 Hz / for AC / final rated value | V | 240 |
| • 1 / at 60 Hz / for AC / final rated value | V | 240 |
| • 1 / at 60 Hz / for AC / initial rated value | V | 210 |

Installation/mounting/dimensions:

| | | |
|-------------------------|----|------------------|
| Type of mounting | | snap-on mounting |
| Width | mm | 18.5 |
| Height | mm | 90 |
| Depth | mm | 68 |

Certificates/approvals:

Verification of suitability CE / UL / CSA / CCC

General Product Approval

Test Certificates



[Manufacturer](#)

Shipping Approval



other

[Manufacturer](#)

[other](#)



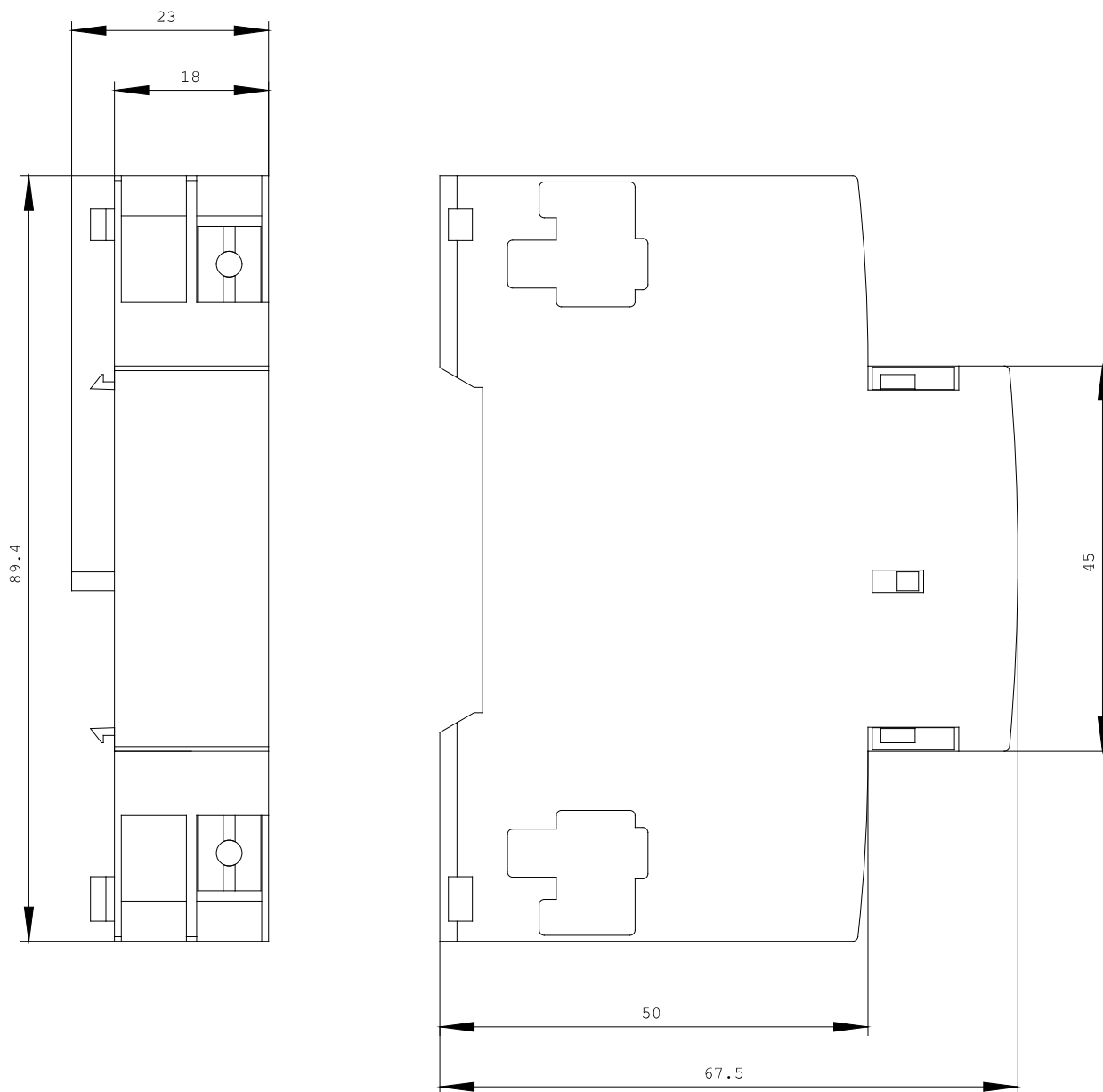
Further information:

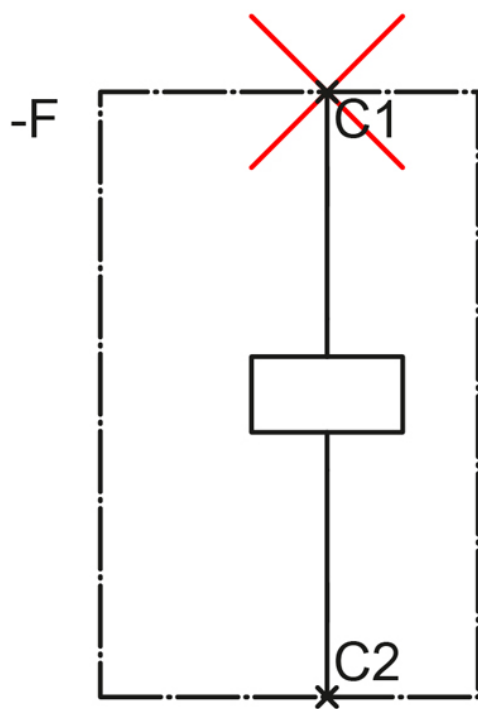
Information- and Downloadcenter (Catalogs, Brochures,...)

<http://www.siemens.com/industrial-controls/catalogs>

Industry Mall (Online ordering system)

<http://www.siemens.com/industrial-controls/mall>





last change:

Aug 24, 2011