



BUILT-IN LUMINAIRE STEADY BURNING LIGHT,
24V UC, RED

General technical details:

product designation		continous light
Consumed current	mA	70
Type of voltage		
• of the operating voltage		AC/DC
• of the supply voltage / of the fluorescent material		AC/DC
Operating frequency		
• 1 / rated value	Hz	50
Operating voltage		
• 1 / for DC / rated value	V	24
• 1 / at 50 Hz / for AC / rated value	V	24
Supply voltage / 1 / of the fluorescent material		
• at 50 Hz / for AC / rated value	V	24
• for DC / rated value	V	24
Item designation		
• according to DIN 40719 extendable after IEC 204-2 / according to IEC 750		H
• according to DIN EN 61346-2		P

Mechanical design:

Product component / fluorescent materials	Yes
--	-----

Type of mounting		screw fixing
material / of the housing		thermoplast
Color / of the lens		red
External diameter / of the signal column element	mm	70

Lamp:

Design of the light		lights with integrated LEDs
Nature of fluorescent material		LED

Ambient conditions:

Ambient temperature		
• during operating	°C	-20 ... +60
Protection class IP		IP65
Depth	mm	75
Height	mm	96.5
Width	mm	75

Certificates/approvals:

General Product Approval

other

[ROSTEST](#)



[Manufacturer](#)

Further information:

Information- and Downloadcenter (Catalogs, Brochures,...)

<http://www.siemens.com/industrial-controls/catalogs>

Industry Mall (Online ordering system)

<http://www.siemens.com/industrial-controls/mall>

CAX-Online-Generator

<http://www.siemens.com/cax>

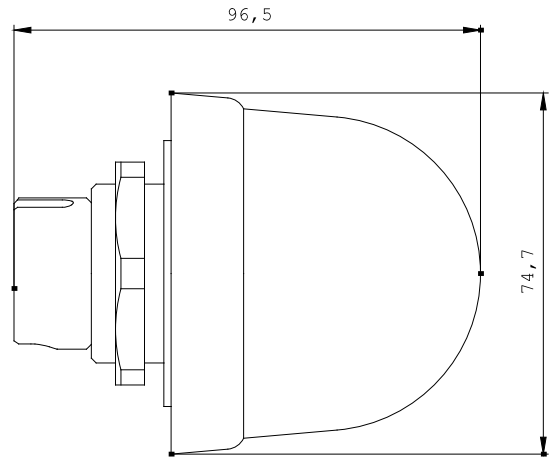
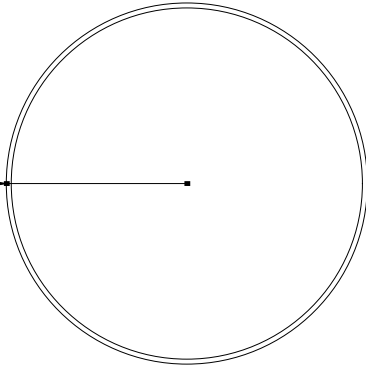
Service&Support (Manuals, Certificates, Characteristics, FAQs,...)

<http://support.automation.siemens.com/WW/view/en/8WD5320-5AB/all>

Image database (product images, 2D dimension drawings, 3D models, device circuit diagrams, ...)

http://www.automation.siemens.com/bilddb/cax_en.aspx?mlfb=8WD5320-5AB

R37,3



last change:

Oct 24, 2011