



SAFETY POSITION SWITCHES WITH SOLENOID INTERLOCKING LOCK. FORCE 2600N,5 APPR. DIR. METAL HOUSING,3X(M20X1.5) SPRING-LOCKED, AUXILIARY RELEASE ON FRONT MAGNET VOLTAGE 115V AC, MONITOR. OF ACTUATOR 2NC/1NO, MONITOR. OF MAGNET 2NC/1NO

### General technical details:

#### Supply voltage

- of the magnet coil

V

115

#### Relative ON period

- of the magnet coil

%

100

#### Recorded real power

- of the magnet coil

W

3.5

#### Insulation voltage

- rated value

V

250

#### Degree of pollution

class 3

#### Thermal current

A

6

#### Operating current

- at AC-15

- at 24 V / rated value

A

6

- at 125 V / rated value

A

3

- at 230 V / rated value

A

1.5

- at DC-13

- at 24 V / rated value

A

3

- at 125 V / rated value

A

0.55

- at 230 V / rated value

A

0.27

<b>Continuous current</b>		
• of the slow DIAZED fuse link	A	6
• of the quick DIAZED fuse link	A	10
• of the C characteristic circuit breaker	A	0.5
<b>Mechanical operating cycles as operating time / typical</b>		1,000,000
<b>Electrical operating cycles as operating time</b>		
• with contactor 3RH11, 3RT1016, 3RT1017, 3RT1024, 3RT1025, 3RT1026 / typical		1,000,000
<b>Electrical operating cycles in one hour</b>		
• with contactor 3RH11, 3RT1016, 3RT1017, 3RT1024, 3RT1025, 3RT1026		6,000
<b>Repeat accuracy</b>	mm	0.05
<b>Design of the contact element</b>		slow-action contacts
<b>Number of NC contacts</b>		
• for the position surveillance of the locking element		2
<b>Number of NC contacts</b>		
• for the position surveillance of the activation element		2
<b>Number of NO contacts</b>		
• for the position surveillance of the locking element		1
<b>Number of NO contacts</b>		
• for the position surveillance of the activation element		1
<b>Design of the switching function</b>		positive opening
<b>Resistance against vibration</b>		0.35 mm / 5g
<b>Resistance against shock</b>		30g / 11 ms
<b>Ambient temperature</b>		
• during operating	°C	-25 ... +60
• during storage	°C	-40 ... +80
<b>Width of the sensor</b>	mm	54
<b>material</b>		
• of the housing		metal
<b>Material / of the housing / of the switch head</b>		metal
<b>Design of the operating mechanism</b>		5 directions of approach
<b>Actuating speed</b>	m/s	0.4 ... 1.5
<b>Minimum actuating force</b>	N	30
<b>Protection class IP</b>		IP66/IP67
<b>Built in orientation</b>		any
<b>Cable gland version</b>		3 x (M20 x 1.5)
<b>Design of the electrical connection</b>		screw-type terminals
<b>Item designation</b>		

- according to DIN 40719 extendable after IEC 204-2 / according to IEC 750
- according to DIN EN 61346-2

	S
	B

#### Certificates/approvals:

General Product Approval			Functional Safety / Safety of Machinery	Test Certificates
		<a href="#">ROSTEST</a>	<a href="#">TÜV</a>	<a href="#">Manufacturer</a>
CQC	CSA		VDE	
other				
<a href="#">Manufacturer</a>				

#### Further information:

##### Information- and Downloadcenter (Catalogs, Brochures,...)

<http://www.siemens.com/industrial-controls/catalogs>

##### Industry Mall (Online ordering system)

<http://www.siemens.com/industrial-controls/mall>

##### CAX-Online-Generator

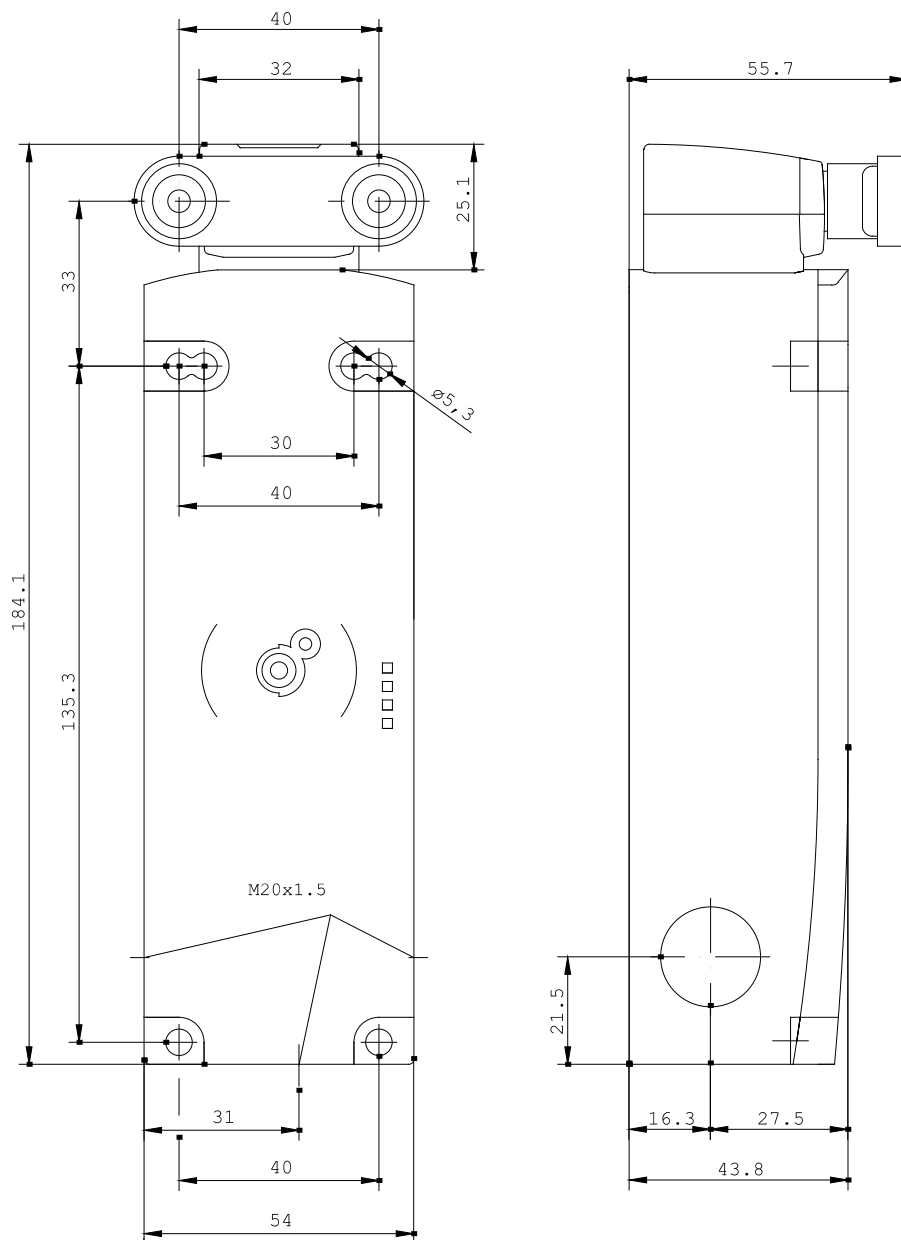
<http://www.siemens.com/cax>

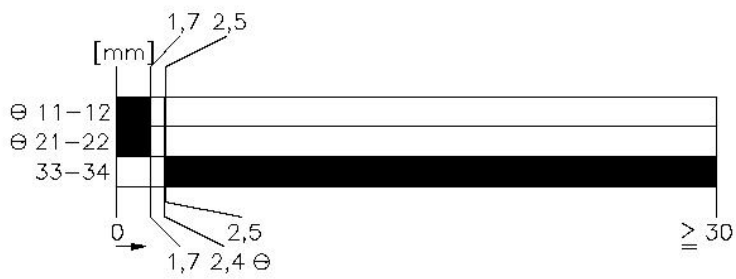
##### Service&Support (Manuals, Certificates, Characteristics, FAQs,...)

<http://support.automation.siemens.com/WW/view/en/3SE5312-0SD12/all>

##### Image database (product images, 2D dimension drawings, 3D models, device circuit diagrams, ...)

[http://www.automation.siemens.com/bilddb/cax\\_en.aspx?mlfb=3SE5312-0SD12](http://www.automation.siemens.com/bilddb/cax_en.aspx?mlfb=3SE5312-0SD12)





last change:

Nov 28, 2011