



SIRIUS POSITION SWITCH;
PLASTIC HOUSING ACC. TO EN50047,
31MM 1NO/2NC SNAP-ACTION CONTACTS W. M12
CONNECTOR, 4-POLE MAX. 250V AND 4A,
2OE AND PE CONNECTED TEFLON PLUNGER

Manufacturer article number

- of the basic unit included in the scope of supply

[3SE5234-0LC05-1AE0](#)

General technical details:

product designation

standard position switch

Insulation voltage

- rated value

V

250

Degree of pollution

class 3

Thermal current

A

4

Operating current

- at AC-15
 - at 24 V / rated value
 - at 125 V / rated value
 - at 230 V / rated value
- at DC-13
 - at 24 V / rated value
 - at 125 V / rated value
 - at 230 V / rated value

A

4

A

4

A

1.5

A

3

A

0.55

A

0.27

Continuous current

- of the slow DIAZED fuse link
- of the quick DIAZED fuse link

A




4

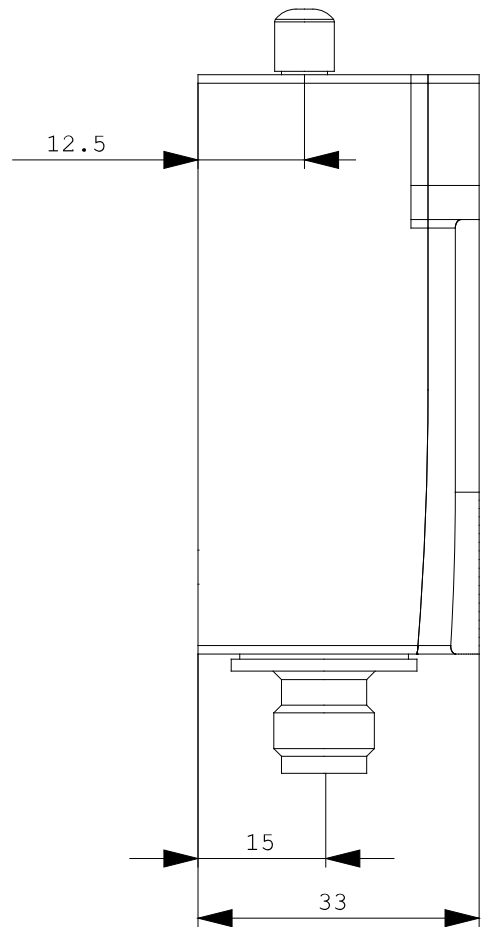
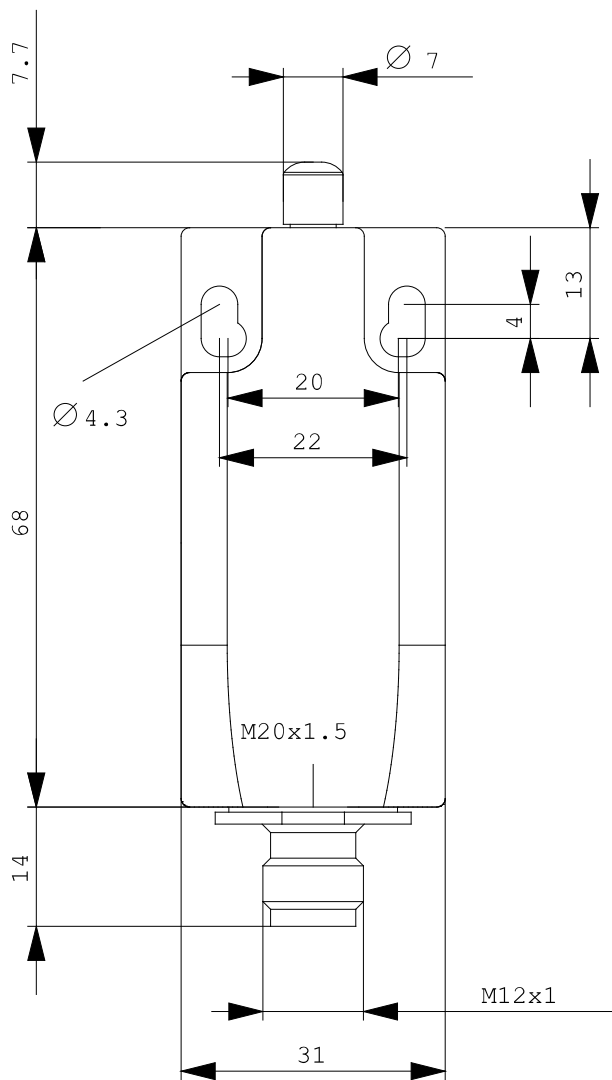
A

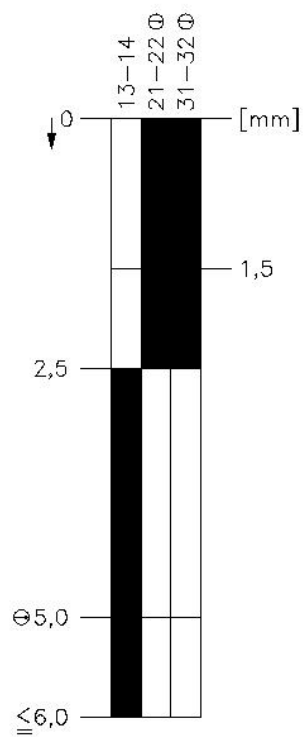
4

| | | |
|---|------------|---|
| • of the C characteristic circuit breaker | A | 1 |
| Mechanical operating cycles as operating time | | |
| • typical | | 15,000,000 |
| Electrical operating cycles as operating time | | |
| • at AC-15 / at 230 V / typical | | 100,000 |
| Electrical operating cycles in one hour | | |
| • with contactor 3RH11, 3RT1016, 3RT1017, 3RT1024, 3RT1025, 3RT1026 | | 6,000 |
| Repeat accuracy | mm | 0.05 |
| Design of the contact element | | snap-action contacts |
| Number of NC contacts | | |
| • for auxiliary contacts | | 2 |
| Design of the switching function | | positive opening |
| Number of NO contacts | | |
| • for auxiliary contacts | | 0 |
| Resistance against vibration | | 0.35 mm / 5g |
| Resistance against shock | | 30g / 11 ms |
| Ambient temperature | | |
| • during operating | °C | -25 ... 85 |
| • during storage | °C | -40 ... 90 |
| Product specification | | |
| • for dimensions | | EN 50047 |
| Width of the sensor | mm | 31 |
| material | | |
| • of the housing | | plastic |
| Material / of the housing / of the switch head | | plastic |
| Design of the operating mechanism | | teflon plunger |
| Actuating speed | mm/s / m/s | 0.1 ... 1.5 |
| Minimum actuating force / in activation direction | N | 20 |
| Protection class IP | | IP65 |
| Built in orientation | | any |
| Cable gland version | | M12 plug |
| Design of the electrical connection | | M12 plug, fixed |
| Design of the plug-in connection | | M12 plug, 4-pole: Pin 1 = terminal 21, Pin 2 = 22, Pin 3 = 31, Pin 4 = 32 |
| Item designation | | |
| • according to DIN 40719 extendable after IEC 204-2 | | S |
| • according to DIN EN 61346-2 | | B |

Certificates/approvals:

| General Product Approval | | | Functional Safety / Safety of Machinery | |
|---|-------------------------|---|---|---------------------|
|  | ROSTEST |  |  | TÜV |
| CQC | | UL | VDE | |
| Test Certificates | | other | | |
| Manufacturer | other | Manufacturer | | |
| Further information: | | | | |
| Information- and Downloadcenter (Catalogs, Brochures,...) | | | | |
| http://www.siemens.com/industrial-controls/catalogs | | | | |
| Industry Mall (Online ordering system) | | | | |
| http://www.siemens.com/industrial-controls/mall | | | | |
| CAX-Online-Generator | | | | |
| http://www.siemens.com/cax | | | | |
| Service&Support (Manuals, Certificates, Characteristics, FAQs,...) | | | | |
| http://support.automation.siemens.com/WW/view/en/3SE5234-0LC05-1AE0/all | | | | |
| Image database (product images, 2D dimension drawings, 3D models, device circuit diagrams, ...) | | | | |
| http://www.automation.siemens.com/bilddb/cax_en.aspx?mlfb=3SE5234-0LC05-1AE0 | | | | |





last change:

Nov 24, 2011