



SIRIUS POSITION SWITCH;  
PLASTIC HOUSING ACC. TO EN50047,  
31MM 1NO/1NC SLOW-ACTION CONTACTS W. M12  
CONNECTOR, 4-POLE PIN ASSIGNMENT: PIN1=21,  
PIN2=22, PIN3=13, PIN4=14,  
MAX. 250V AND 4A, TEFLON PLUNGER

### Manufacturer article number

- of the basic unit included in the scope of supply

[3SE5234-0BC05-1AC4](#)

### General technical details:

#### product designation

standard position switch

#### Insulation voltage

- rated value

V

250

#### Degree of pollution

class 3

#### Thermal current

A

4

#### Operating current

- at AC-15
  - at 24 V / rated value
  - at 125 V / rated value
  - at 230 V / rated value
- at DC-13
  - at 24 V / rated value
  - at 125 V / rated value
  - at 230 V / rated value

A

4

A

4

A

3

A

3

A

0.55

A

0.27

#### Continuous current

- of the slow DIAZED fuse link
- of the quick DIAZED fuse link

A




4

A

4

|   |            |   |
|---|------------|---|
| • of the C characteristic circuit breaker                           | A          | 2   |
| <b>Mechanical operating cycles as operating time</b>                |            |   |
| • typical   |            | 15,000,000  |
| <b>Electrical operating cycles as operating time</b>                |            |   |
| • at AC-15 / at 230 V / typical                                     |            | 100,000   |
| <b>Electrical operating cycles in one hour</b>                      |            |   |
| • with contactor 3RH11, 3RT1016, 3RT1017, 3RT1024, 3RT1025, 3RT1026 |            | 6,000   |
| <b>Repeat accuracy</b>  | mm         | 0.05  |
| <b>Design of the contact element</b>                                |            | slow-action contacts  |
| <b>Number of NC contacts</b>  |            |   |
| • for auxiliary contacts  |            | 1   |
| <b>Design of the switching function</b>                             |            | positive opening  |
| <b>Number of NO contacts</b>  |            |   |
| • for auxiliary contacts  |            | 1   |
| <b>Resistance against vibration</b>                                 |            | 0.35 mm / 5g  |
| <b>Resistance against shock</b>                                     |            | 30g / 11 ms   |
| <b>Ambient temperature</b>  |            |   |
| • during operating  | °C         | -25 ... +85   |
| • during storage  | °C         | -40 ... +90   |
| <b>Product specification</b>  |            |   |
| • for dimensions  |            | EN 50047  |
| <b>Width of the sensor</b>  | mm         | 31  |
| <b>material</b>   |            |   |
| • of the housing  |            | plastic   |
| <b>Material / of the housing / of the switch head</b>               |            | plastic   |
| <b>Design of the operating mechanism</b>                            |            | teflon plunger  |
| <b>Actuating speed</b>  | mm/s / m/s | 0.4 ... 1.5   |
| <b>Minimum actuating force / in activation direction</b>            | N          | 20  |
| <b>Protection class IP</b>  |            | IP65  |
| <b>Built in orientation</b>   |            | any   |
| <b>Cable gland version</b>  |            | M12 plug  |
| <b>Design of the electrical connection</b>                          |            | M12 plug, fixed   |
| <b>Design of the plug-in connection</b>                             |            | M12 plug, 4-pole: Pin 1 = terminal 21, Pin 2 = 22, Pin 3 = 13, Pin 4 = 14 |
| <b>Item designation</b>   |            |   |
| • according to DIN 40719 extendable after IEC 204-2                 |            | S   |
| • according to DIN EN 61346-2                                       |            | B   |

#### Certificates/approvals:

| General Product Approval   |                         |   | Functional Safety / Safety of Machinery  |                     |
|--|-------------------------|---|--|---------------------|
| <br>CQC | <a href="#">ROSTEST</a> | <br>UL | <br>VDE | <a href="#">TÜV</a> |
| Test Certificates  |                         | other   |  |                     |
| <a href="#">Manufacturer</a>   | <a href="#">other</a>   | <a href="#">Manufacturer</a>  |  |                     |

#### Further information:

##### Information- and Downloadcenter (Catalogs, Brochures,...)

<http://www.siemens.com/industrial-controls/catalogs>

##### Industry Mall (Online ordering system)

<http://www.siemens.com/industrial-controls/mall>

##### CAX-Online-Generator

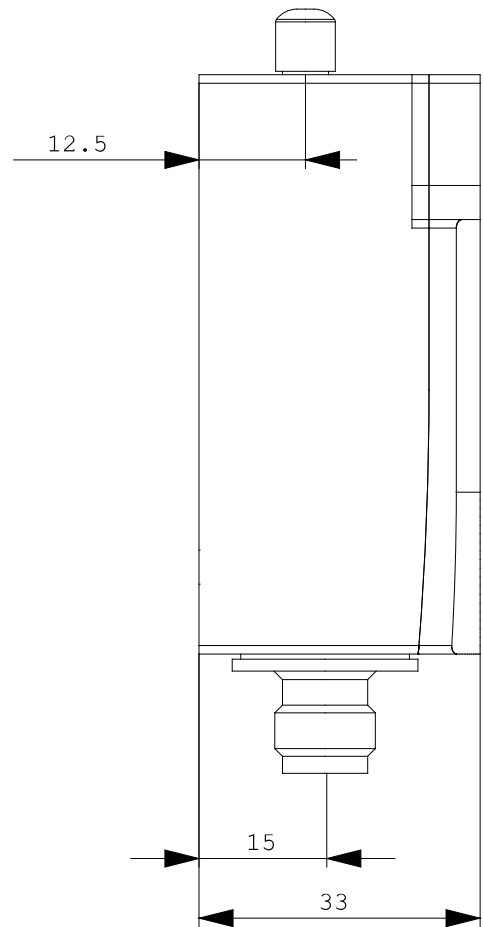
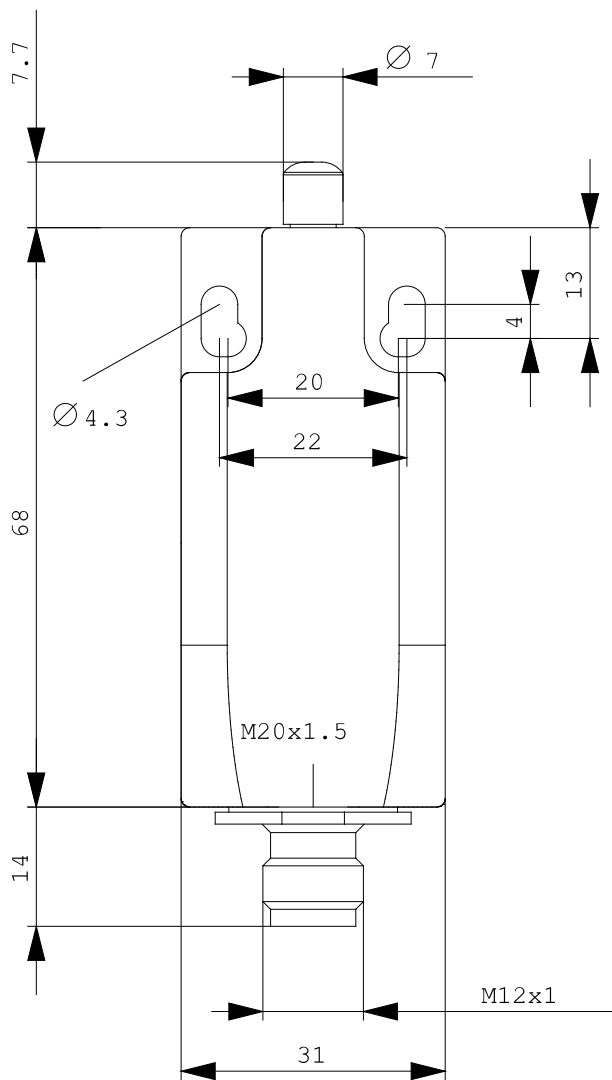
<http://www.siemens.com/cax>

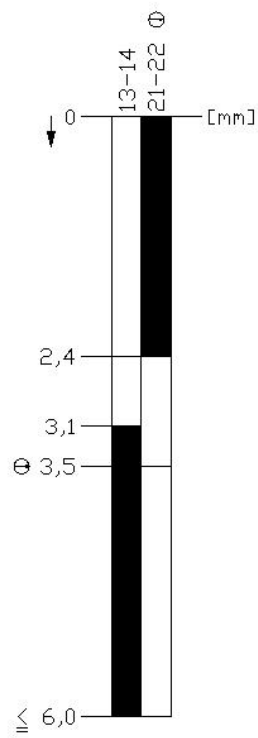
##### Service&Support (Manuals, Certificates, Characteristics, FAQs,...)

<http://support.automation.siemens.com/WW/view/en/3SE5234-0BC05-1AC4/all>

##### Image database (product images, 2D dimension drawings, 3D models, device circuit diagrams, ...)

[http://www.automation.siemens.com/bilddb/cax\\_en.aspx?mlfb=3SE5234-0BC05-1AC4](http://www.automation.siemens.com/bilddb/cax_en.aspx?mlfb=3SE5234-0BC05-1AC4)





last change:

Nov 24, 2011