



SIRIUS HINGED SWITCH PLASTIC
HOUSING,31MM,EN50047 DEVICE CONNECTION
1X(M20X1.5) SNAP-ACTION CONTACTS 1NC/1NO
INTEGR.,W. HOLLOW SHAFT D=8MM;
ACTUATING ANGLE 10 DEGR.

| | | |
|---|--|-------------------------------|
| Manufacturer article number <ul style="list-style-type: none">• of the basic unit included in the scope of supply• of the actuator head for position switches included in the scope of supply | | 3SE5232-0HC05 |
| | | 3SE5000-0AU21 |

General technical details:

| | | |
|--|---|--------------------------|
| product designation | | standard position switch |
| Insulation voltage <ul style="list-style-type: none">• rated value | V | 400 |
| Degree of pollution | | class 3 |
| Thermal current | A | 6 |
| Operating current <ul style="list-style-type: none">• at AC-15<ul style="list-style-type: none">• at 24 V / rated value• at 125 V / rated value• at 230 V / rated value• at 400 V / rated value• at DC-13<ul style="list-style-type: none">• at 24 V / rated value• at 125 V / rated value• at 230 V / rated value• at 400 V / rated value | A | 6 |
| | A | 6 |
| | A | 3 |
| | A | 4 |
| | A | 3 |
| | A | 0.55 |
| | A | 0.27 |
| | A | 0.1 |

| | | |
|---|--------|--|
| Continuous current | | |
| • of the slow DIAZED fuse link | A | 6 |
| • of the quick DIAZED fuse link | A | 10 |
| • of the C characteristic circuit breaker | A | 2 |
| Mechanical operating cycles as operating time | | |
| • typical | | 1,000,000 |
| Electrical operating cycles as operating time | | |
| • with contactor 3RH11, 3RT1016, 3RT1017, 3RT1024, 3RT1025, 3RT1026 / typical | | 10,000,000 |
| • at AC-15 / at 230 V / typical | | 100,000 |
| Electrical operating cycles in one hour | | |
| • with contactor 3RH11, 3RT1016, 3RT1017, 3RT1024, 3RT1025, 3RT1026 | | 6,000 |
| Repeat accuracy | mm | 0.05 |
| Design of the contact element | | snap-action contacts |
| Number of NC contacts | | |
| • for auxiliary contacts | | 1 |
| Design of the switching function | | positive opening, integrated |
| Number of NO contacts | | |
| • for auxiliary contacts | | 1 |
| Resistance against vibration | | 0.35 mm / 5g |
| Resistance against shock | | 30g / 11 ms |
| Ambient temperature | | |
| • during operating | °C | -25 ... 85 |
| • during storage | °C | -40 ... 90 |
| Product specification | | |
| • for dimensions | | EN 50047 |
| Width of the sensor | mm | 31 |
| material | | |
| • of the housing | | plastic |
| Material / of the housing / of the switch head | | plastic / stainless steel |
| Design of the operating mechanism | | operating angle 10°, hollow shaft, di = 8 mm, da = 12 mm |
| Actuating speed | mm/s / | 0.1 |
| Protection class IP | | IP65 |
| Built in orientation | | any |
| Cable gland version | | 1x (M20 x 1.5) |
| Design of the electrical connection | | screw-type terminals |
| Item designation | | |
| • according to DIN 40719 extendable after IEC 204-2 | | S |

- according to DIN EN 61346-2

B

Certificates/approvals:

General Product Approval

Functional Safety / Safety of Machinery

Test Certificates



CQC

[ROSTEST](#)



UL



VDE

[TÜV](#)

[Manufacturer](#)

other

[Manufacturer](#)

Further information:

Information- and Downloadcenter (Catalogs, Brochures,...)

<http://www.siemens.com/industrial-controls/catalogs>

Industry Mall (Online ordering system)

<http://www.siemens.com/industrial-controls/mall>

CAX-Online-Generator

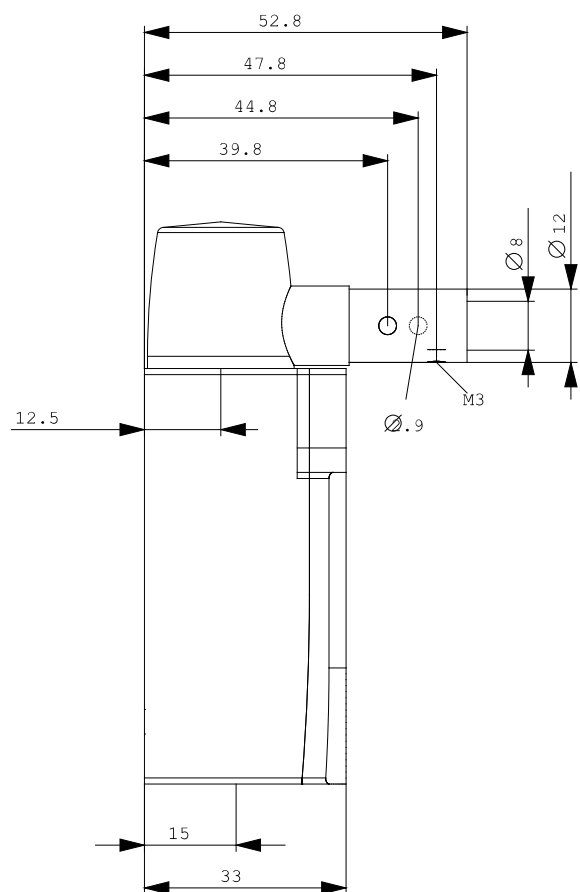
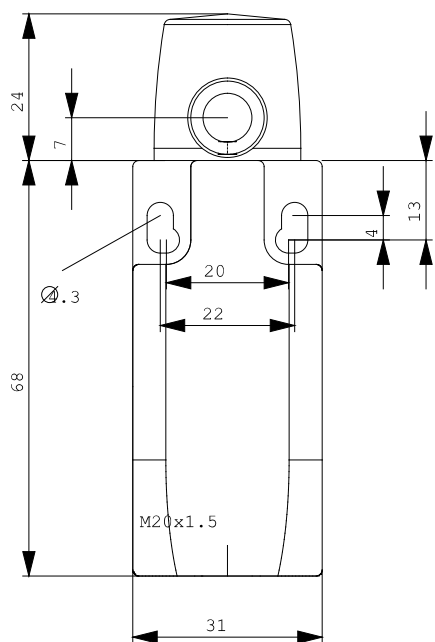
<http://www.siemens.com/cax>

Service&Support (Manuals, Certificates, Characteristics, FAQs,...)

<http://support.automation.siemens.com/WW/view/en/3SE5232-0HU21/all>

Image database (product images, 2D dimension drawings, 3D models, device circuit diagrams, ...)

http://www.automation.siemens.com/bilddb/cax_en.aspx?mlfb=3SE5232-0HU21



last change:

Nov 24, 2011