



SIRIUS POSITION SWITCH PLASTIC HOUSING ACC. TO EN50047,  
31MM DEVICE CONNECTION 1X(M20X1.5);  
1NO/1NC SNAP-ACTION CONTACTS SHORT-STROKE  
INTEGRATED TEFLON PLUNGER

### Manufacturer article number

- of the basic unit included in the scope of supply

[3SE5232-0FC05](#)

### General technical details:

#### product designation

standard position switch

#### Insulation voltage

- rated value

V

400

#### Degree of pollution

class 3

#### Thermal current

A

6

#### Operating current

- at AC-15
  - at 24 V / rated value
  - at 125 V / rated value
  - at 230 V / rated value
- at DC-13
  - at 24 V / rated value
  - at 125 V / rated value
  - at 230 V / rated value

A

6

A

6

A

3

A

3

A

0.55

A

0.27

#### Continuous current

- of the slow DIAZED fuse link
- of the quick DIAZED fuse link

A

6

A

10

• of the C characteristic circuit breaker	A	2
<b>Mechanical operating cycles as operating time</b>		
• typical		15,000,000
<b>Electrical operating cycles as operating time</b>		
• with contactor 3RH11, 3RT1016, 3RT1017, 3RT1024, 3RT1025, 3RT1026 / typical		10,000,000
• at AC-15 / at 230 V / typical		100,000
<b>Electrical operating cycles in one hour</b>		
• with contactor 3RH11, 3RT1016, 3RT1017, 3RT1024, 3RT1025, 3RT1026		6,000
<b>Repeat accuracy</b>	mm	0.05
<b>Design of the contact element</b>		snap-action contacts
<b>Number of NC contacts</b>		
• for auxiliary contacts		1
<b>Design of the switching function</b>		positive opening, short-stroke, integrated
<b>Number of NO contacts</b>		
• for auxiliary contacts		1
<b>Resistance against vibration</b>		0.35 mm / 5g
<b>Resistance against shock</b>		30g / 11 ms
<b>Ambient temperature</b>		
• during operating	°C	-25 ... +85
• during storage	°C	-40 ... +90
<b>Product specification</b>		
• for dimensions		EN 50047
<b>Width of the sensor</b>	mm	31
<b>material</b>		
• of the housing		plastic
<b>Material / of the housing / of the switch head</b>		plastic
<b>Design of the operating mechanism</b>		teflon plunger
<b>Actuating speed</b>	mm/s / m/s	0.1 ... 1.5
<b>Minimum actuating force / in activation direction</b>	N	20
<b>Protection class IP</b>		IP65
<b>Built in orientation</b>		any
<b>Cable gland version</b>		1x (M20 x 1.5)
<b>Design of the electrical connection</b>		screw-type terminals
<b>Item designation</b>		
• according to DIN 40719 extendable after IEC 204-2		S
• according to DIN EN 61346-2		B

#### Certificates/approvals:



CQC

ROSTEST



UL



VDE

TÜV

## Test Certificates

other

[Manufacturer](#)[other](#)[Manufacturer](#)

## Further information:

## Information- and Downloadcenter (Catalogs, Brochures,...)

<http://www.siemens.com/industrial-controls/catalogs>

## Industry Mall (Online ordering system)

<http://www.siemens.com/industrial-controls/mall>

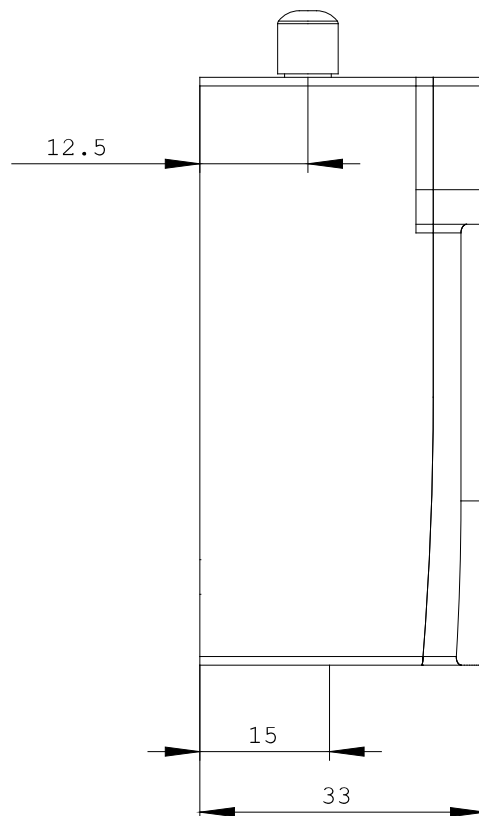
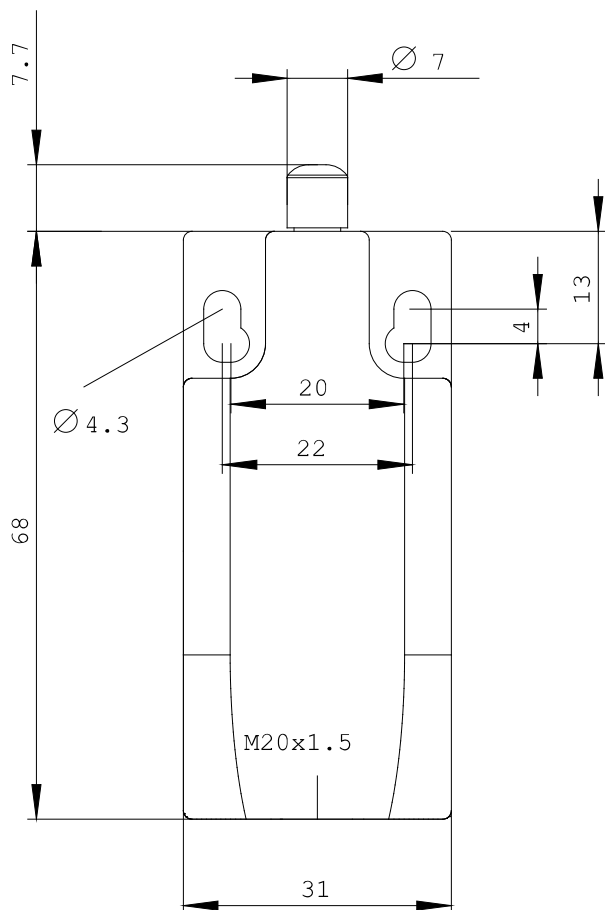
## CAx-Online-Generator

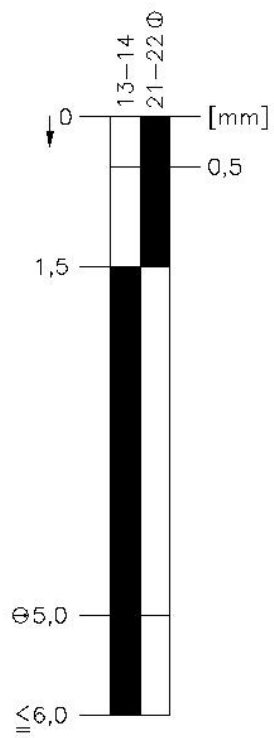
<http://www.siemens.com/cax>

## Service&amp;Support (Manuals, Certificates, Characteristics, FAQs,...)

<http://support.automation.siemens.com/WW/view/en/3SE5232-0FC05/all>

## Image database (product images, 2D dimension drawings, 3D models, device circuit diagrams, ...)

[http://www.automation.siemens.com/bilddb/cax\\_en.aspx?mlfb=3SE5232-0FC05](http://www.automation.siemens.com/bilddb/cax_en.aspx?mlfb=3SE5232-0FC05)



last change:

Nov 24, 2011