



BASIC SWITCH FOR POSITION SWITCH 3SE51, METAL HOUSING 40MM TO EN50041,1NO/1NC SNAP-ACTION CONTACTS W. M12 CONNECTOR, 5-POLE, FIXED W. 2 LEDS, YELLOW/GREEN, 24V DC, W/O ACTUATOR HEAD PIN ASSIGNMENT: PIN1=21, PIN2=22, PIN3=13 AND LED GREEN, PIN4=14 AND LED YELLOW, PIN5=GROUND LED

Manufacturer article number <ul style="list-style-type: none">• of the basic unit included in the scope of supply		3SE5114-1CA00-1AF3
----------------------------------------------------------------------------------------------------------------------------------------	--	------------------------------------

General technical details:		
product designation		basic switch for standard position switches
Type of voltage / of the supply voltage <ul style="list-style-type: none">• of the optional LED display		DC
Insulation voltage <ul style="list-style-type: none">• rated value	V	125
Degree of pollution		class 3
Thermal current	A	4
Operating current <ul style="list-style-type: none">• at DC-13• at 24 V / rated value	A	3
Continuous current <ul style="list-style-type: none">• of the slow DIAZED fuse link• of the quick DIAZED fuse link• of the C characteristic circuit breaker	A	4
	A	4
	A	1
Mechanical operating cycles as operating time <ul style="list-style-type: none">• typical		15,000,000
Electrical operating cycles as operating time		

<ul style="list-style-type: none"> • with contactor 3RH11, 3RT1016, 3RT1017, 3RT1024, 3RT1025, 3RT1026 / typical 		10,000,000
Electrical operating cycles in one hour <ul style="list-style-type: none"> • with contactor 3RH11, 3RT1016, 3RT1017, 3RT1024, 3RT1025, 3RT1026 		6,000
Repeat accuracy	mm	0.05
Design of the contact element		snap-action contacts
Number of NC contacts <ul style="list-style-type: none"> • for auxiliary contacts 		1
Design of the switching function		Positive opening with appropriate positive opening actuator head
Number of NO contacts <ul style="list-style-type: none"> • for auxiliary contacts 		1
Resistance against vibration		0.35 mm / 5g
Resistance against shock		30g / 11 ms
Ambient temperature <ul style="list-style-type: none"> • during operating • during storage 	°C °C	-25 ... 70 -40 ... 90
Product specification <ul style="list-style-type: none"> • for dimensions 		EN 50041
Width of the sensor	mm	40
material <ul style="list-style-type: none"> • of the housing 		metal
Actuating speed	mm/s / m/s	0.1 ... 2.5
Minimum actuating force / in activation direction	N	20
Protection class IP		IP66/IP67
Built in orientation		any
Cable gland version		M12 plug
Design of the electrical connection		M12 plug, fixed
Design of the plug-in connection		M12 plug, 5-pole: Pin 1 = terminal 21, Pin 2 = 22, Pin 3 = 13/LED green, Pin 4 = 14/LED yellow, Pin 5 = ground LED
Item designation <ul style="list-style-type: none"> • according to DIN 40719 extendable after IEC 204-2 • according to DIN EN 61346-2 		S B

Certificates/approvals:

General Product Approval		Functional Safety / Safety of Machinery	Test Certificates
--------------------------	--	-----------------------------------------------	-------------------



CQC

[ROSTEST](#)



UL



VDE

[TÜV](#)

[Manufacturer](#)

other

[Manufacturer](#)

Further information:

Information- and Downloadcenter (Catalogs, Brochures,...)

<http://www.siemens.com/industrial-controls/catalogs>

Industry Mall (Online ordering system)

<http://www.siemens.com/industrial-controls/mall>

CAX-Online-Generator

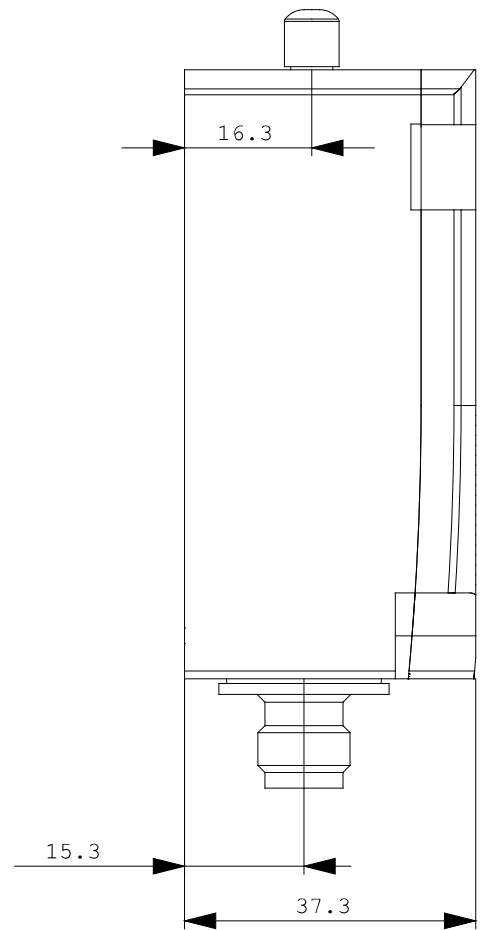
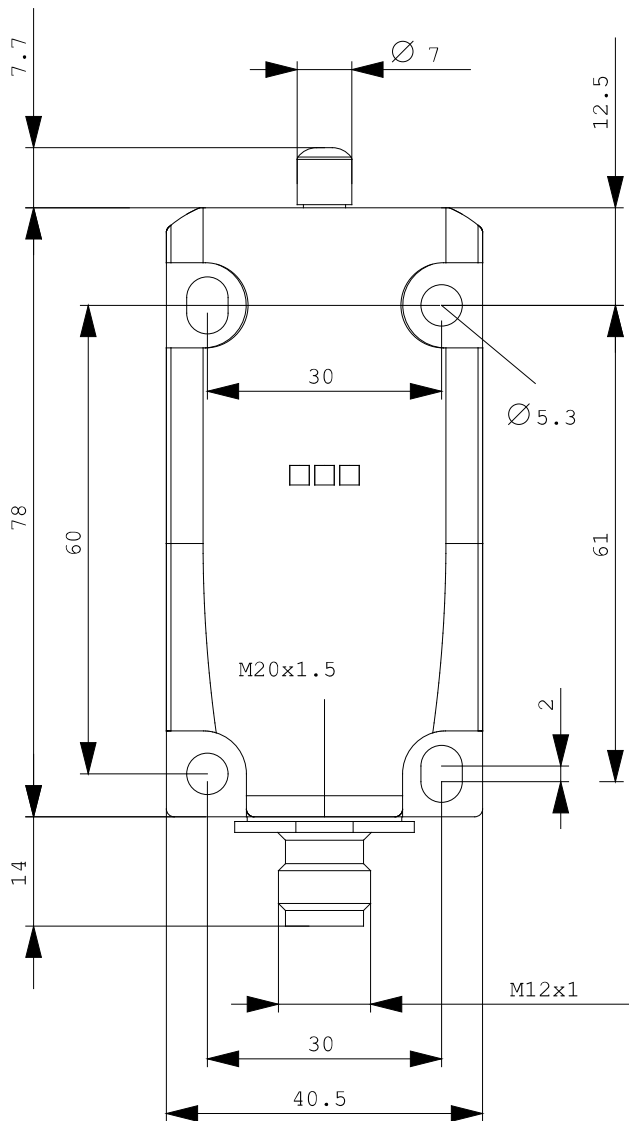
<http://www.siemens.com/cax>

Service&Support (Manuals, Certificates, Characteristics, FAQs,...)

<http://support.automation.siemens.com/WW/view/en/3SE5114-1CA00-1AF3/all>

Image database (product images, 2D dimension drawings, 3D models, device circuit diagrams, ...)

http://www.automation.siemens.com/bilddb/cax_en.aspx?mlfb=3SE5114-1CA00-1AF3



last change:

Nov 24, 2011