



BASIC SWITCH FOR POSITION SWITCH 3SE51. METAL ENCLOSURE 40MM TO EN50041 DEVICE CONNECTION 1X (M20X1.5) W. M12 CONNECTOR, 5-POLE, FIXED 1NO/2NC SLOW-ACTION CONTACTS, (2NC AND PE CONNECTED) MAX. 24 V, 4A

Manufacturer article number <ul style="list-style-type: none">of the basic unit included in the scope of supply		3SE5114-0KA00-1AE1
General technical details:		
product designation		basic switch for standard position switches
Insulation voltage <ul style="list-style-type: none">rated value	V	125
Degree of pollution		class 3
Thermal current	A	4
Operating current <ul style="list-style-type: none">at AC-15<ul style="list-style-type: none">at 24 V / rated valueat 125 V / rated valueat DC-13<ul style="list-style-type: none">at 24 V / rated valueat 125 V / rated value	A A A A	4 4 3 0.55
Continuous current <ul style="list-style-type: none">of the slow DIAZED fuse linkof the quick DIAZED fuse linkof the C characteristic circuit breaker	A A A	4 4 1
Mechanical operating cycles as operating time		

• typical		15,000,000
Electrical operating cycles as operating time		
• with contactor 3RH11, 3RT1016, 3RT1017, 3RT1024, 3RT1025, 3RT1026 / typical		10,000,000
Electrical operating cycles in one hour		
• with contactor 3RH11, 3RT1016, 3RT1017, 3RT1024, 3RT1025, 3RT1026		6,000
Repeat accuracy	mm	0.05
Design of the contact element		slow-action contacts
Number of NC contacts		
• for auxiliary contacts		2
Design of the switching function		Positive opening with appropriate positive opening actuator head
Number of NO contacts		
• for auxiliary contacts		1
Resistance against vibration		0.35 mm / 5g
Resistance against shock		30g / 11 ms
Ambient temperature		
• during operating	°C	-25 ... 85
• during storage	°C	-40 ... 90
Product specification		
• for dimensions		EN 50041
Width of the sensor	mm	40
material		
• of the housing		metal
Actuating speed	mm/s / m/s	0.4 ... 2.5
Minimum actuating force / in activation direction	N	20
Protection class IP		IP66/IP67
Built in orientation		any
Cable gland version		M12 plug
Design of the electrical connection		M12 plug, fixed
Design of the plug-in connection		M12 plug, 5-pole: Pin 1 = terminal 21, Pin 2 = 22, Pin 3 = 31, Pin 4 = 32, Pin 5 = PU
Item designation		
• according to DIN 40719 extendable after IEC 204-2		S
• according to DIN EN 61346-2		B

Certificates/approvals:

General Product Approval		Functional Safety / Safety of Machinery	Test Certificates
--------------------------	--	---	-------------------



CQC

[ROSTEST](#)



UL



VDE

[TÜV](#)

[Manufacturer](#)

other

[Manufacturer](#)

Further information:

Information- and Downloadcenter (Catalogs, Brochures,...)

<http://www.siemens.com/industrial-controls/catalogs>

Industry Mall (Online ordering system)

<http://www.siemens.com/industrial-controls/mall>

CAX-Online-Generator

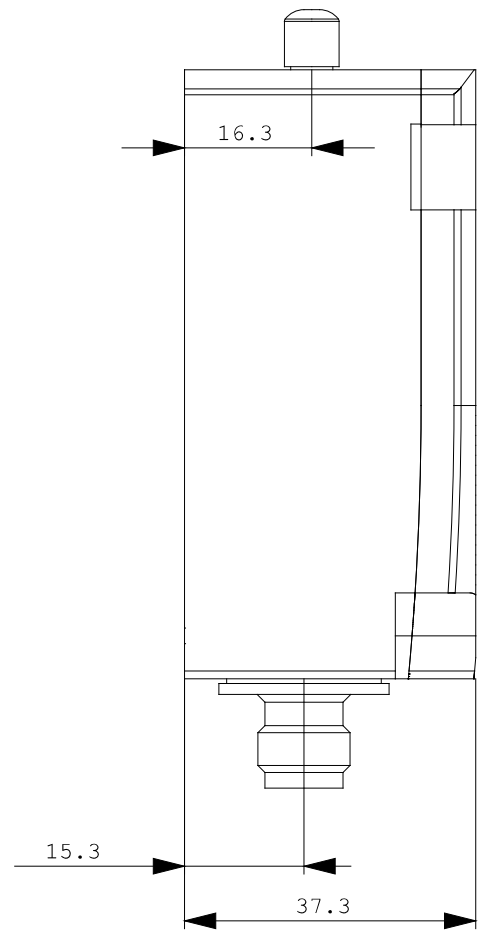
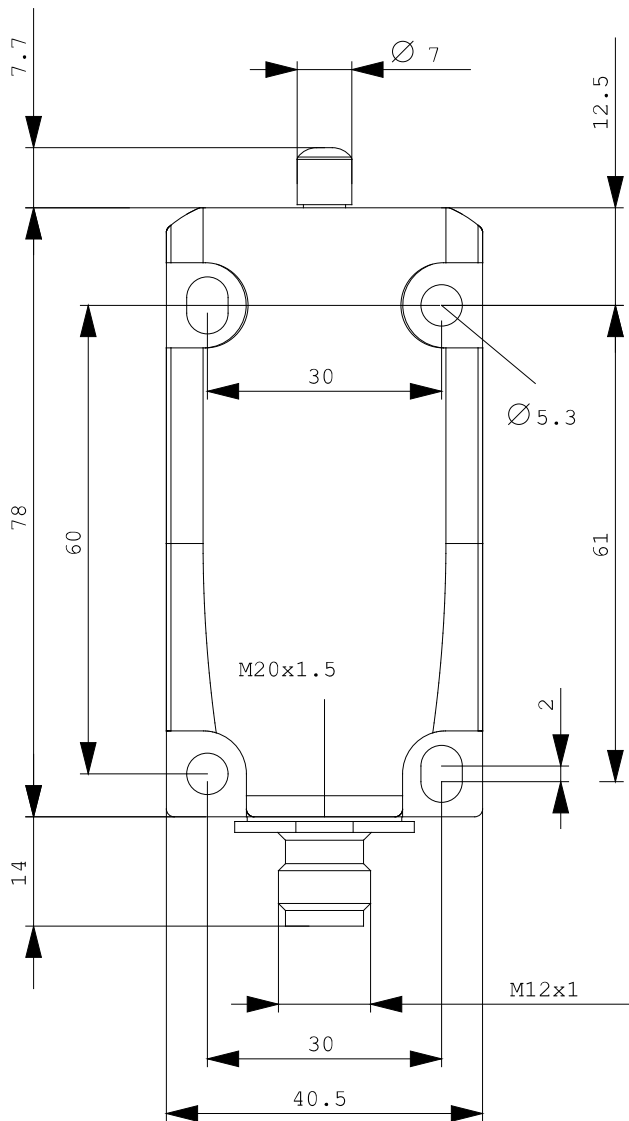
<http://www.siemens.com/cax>

Service&Support (Manuals, Certificates, Characteristics, FAQs,...)

<http://support.automation.siemens.com/WW/view/en/3SE5114-0KA00-1AE1/all>

Image database (product images, 2D dimension drawings, 3D models, device circuit diagrams, ...)

http://www.automation.siemens.com/bilddb/cax_en.aspx?mlfb=3SE5114-0KA00-1AE1



last change:

Nov 24, 2011